

## BS-479 WIRELESS ZONE EXTENDER FOR BS-468/A



### TECHNICAL SPECIFICATIONS

POWER SUPPLY	Powered by panel BS-468/A
COMMUNICATION FREQUENCY	868 MHz
COMMUNICATION RANGE	About 200m (in open area)
POWER CONSUMPTION	Maximum Consumption 40mA
PRODUCED IN ACCORDANCE WITH	EN 50136-1-1, EN 60950-1
COMPLIES WITH	ETSI EN 300220, EN 50130-4, EN 55022, EN 60950-1 ERC REC 70-03
OPERATING TEMPERATURE RANGE	0 to 60 °C
RELATIVE HUMIDITY	Up to 90%
EXTERNAL DIMENSIONS (LxWxH)	68.5 x 59.2 x 13.3 mm
TYPICAL WEIGHT	15gr.
GUARANTEE	2 years

Thank you for your trust in our products  
Olympia Electronics - European manufacturer

### DESCRIPTION

BS-479 (Figure 1) is an expansion card which operates exclusively with Olympia Electronics BS-468/A alarm panel.

When the device is placed on the BS-468/A panel, 32 additional wireless zones are obtained.

The numbering of the zones starts from zone 25 and goes up to zone 56.

### INSTALLATION

Power off the BS-468/A control panel. The installer will need to plug the BS-479 card on the BS-468/A control panel (Figure 2).

First place the plastic spacers (as shown in figures 2 and 3).

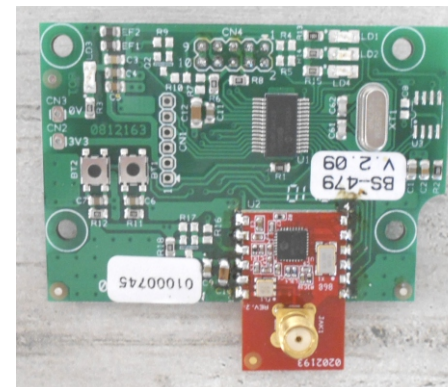


Figure 1 : Top view of the board BS-479

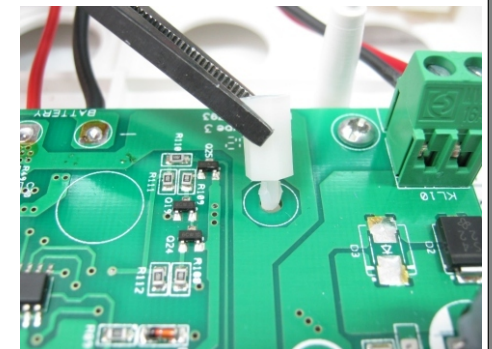
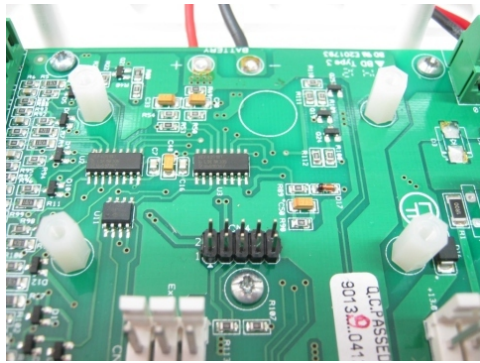


Figure 2 : Mounting of the spacers



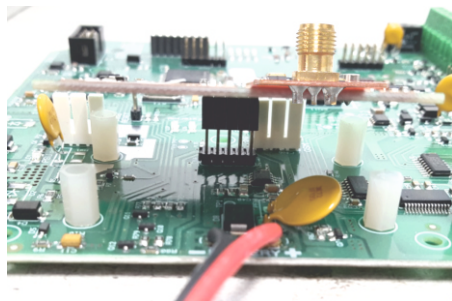
**Figure 3 : Mounted Spacers**

*Then place the circuit board BS-479 in the panel.*

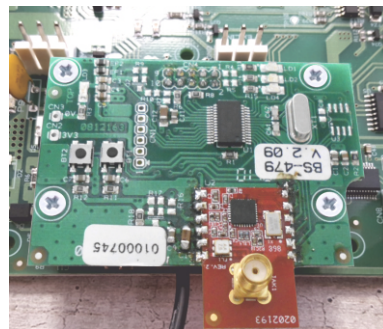
### WIRELESS ZONES CONNECTION AND OPERATION

For the connection and operation of the wireless zones please read the user guide of the panel BS-468/A.

Screw in the 4 screws which are in the provided bag. (Figure 5)

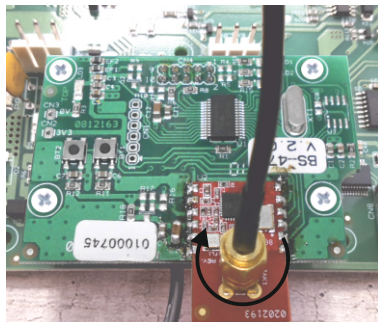


**Figure 4 : Placement of the board BS-479**



**Figure 5 : Mounting of the board BS-479**

To connect the antenna tighten the antenna connector to the corresponding connector to the P.C.B.



**Figure 6 : Connecting the antenna to the P.C.B.**

### DEVICE REGISTRATION

When the device BS-479 is placed, power on BS-468/A control panel. After approximately 30 seconds, the following message will appear :

In order to register the device go to:

**FAULT  
EXTENSION 05  
NOT REGISTERED**

**TECHNICIAN MENU ->  
SYSTEM->  
SCAN EXTENSION**

Once detection is done, the device is in normal operation.

### WARRANTY

Olympia Electronics guarantees the quality, condition and operation of the goods. The period of warranty is specified in the official catalogue of Olympia Electronics and also in the technical leaflet, which accompanies each product. This warranty ceases to exist if the buyer does not follow the technical instructions included in official documents given by Olympia Electronics or if the buyer modifies the goods provided or has any repairs or re-setting done by a third party, unless Olympia Electronics has fully agreed to them in writing. Products that have been damaged can be returned to the premises of our company for repair or replacement, as long as the warranty period is valid.

Olympia Electronics reserves the right to repair or to replace the returned goods and to or not charge the buyer depending on the reason of defection. Olympia Electronics reserves the right to charge or not the buyer the transportation cost.

### HEAD OFFICE

72nd km. O.N.R. Thessaloniki-Katerini  
P.C. 60300 P.O. Box 06 Eginio Pierias Greece

[www.olympia-electronics.gr](http://www.olympia-electronics.gr)  
[info@olympia-electronics.gr](mailto:info@olympia-electronics.gr)