

Package Contents

- 1 Detector
- 1 Mounting Accessories
- 1 Manual

General

The user have to read carefully the following instructions, in order to be properly informed and keep them for future use.

The BS-661/A is a conventional heat detector which integrates the function of rate-of-rise heat detection. The detector transitions to alarm state when the temperature reaches 57°C. Also, the detector transitions to alarm state when the temperature rises suddenly by 32°C regardless of the initial temperature at the beginning of the sudden rise event.

The detector have a visible led and a remote led driver which are light up constantly in case of detection of fire, till cancelled from the panel. They are turned off only when a reset command is given from the panel. The indicator led blinks every 7 sec indicating the normal function.

INSTALLATION

For spacings, heights and all mounting points consult the local/national regulation or the standard EN 54-14/2018. The detectors must be placed at least 50 cm away from fluorescent lamps. Cable cross-section should be from 0.5 to 2.5mm².

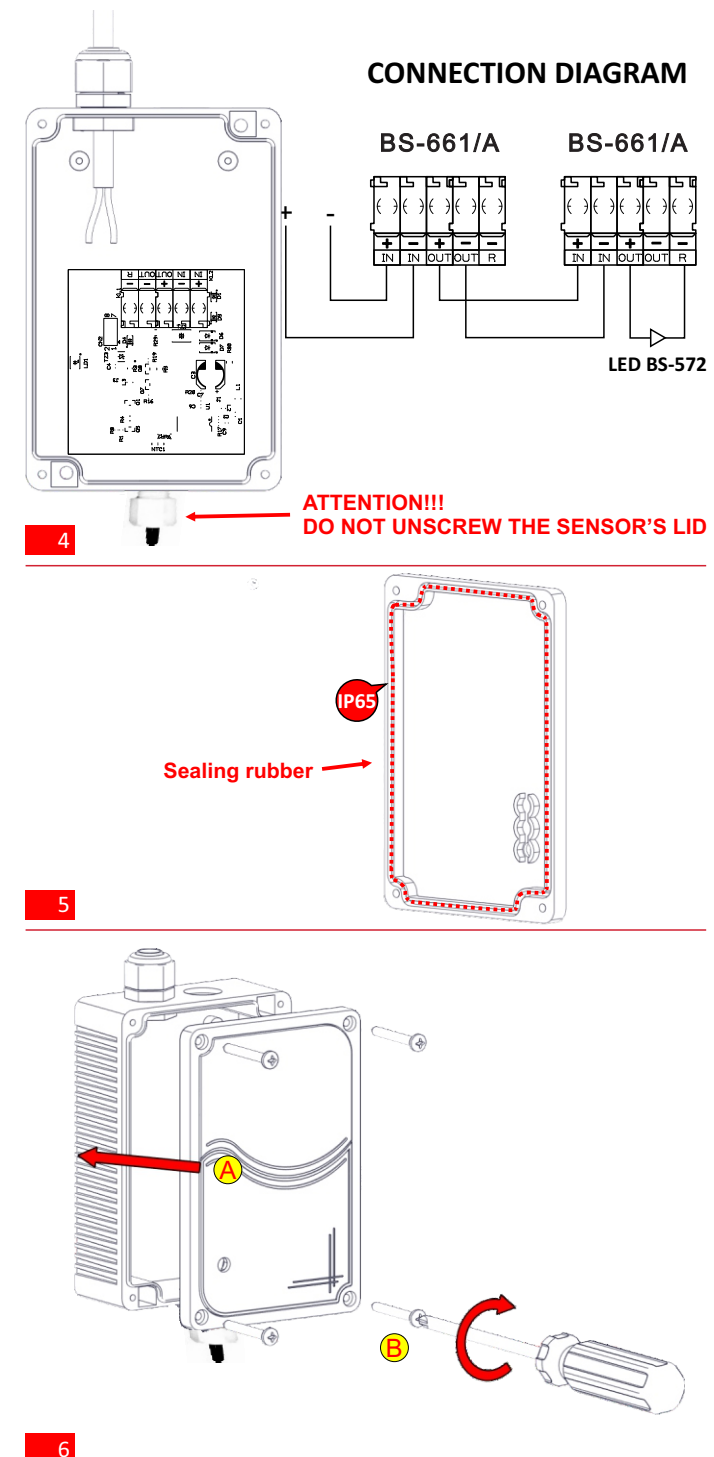
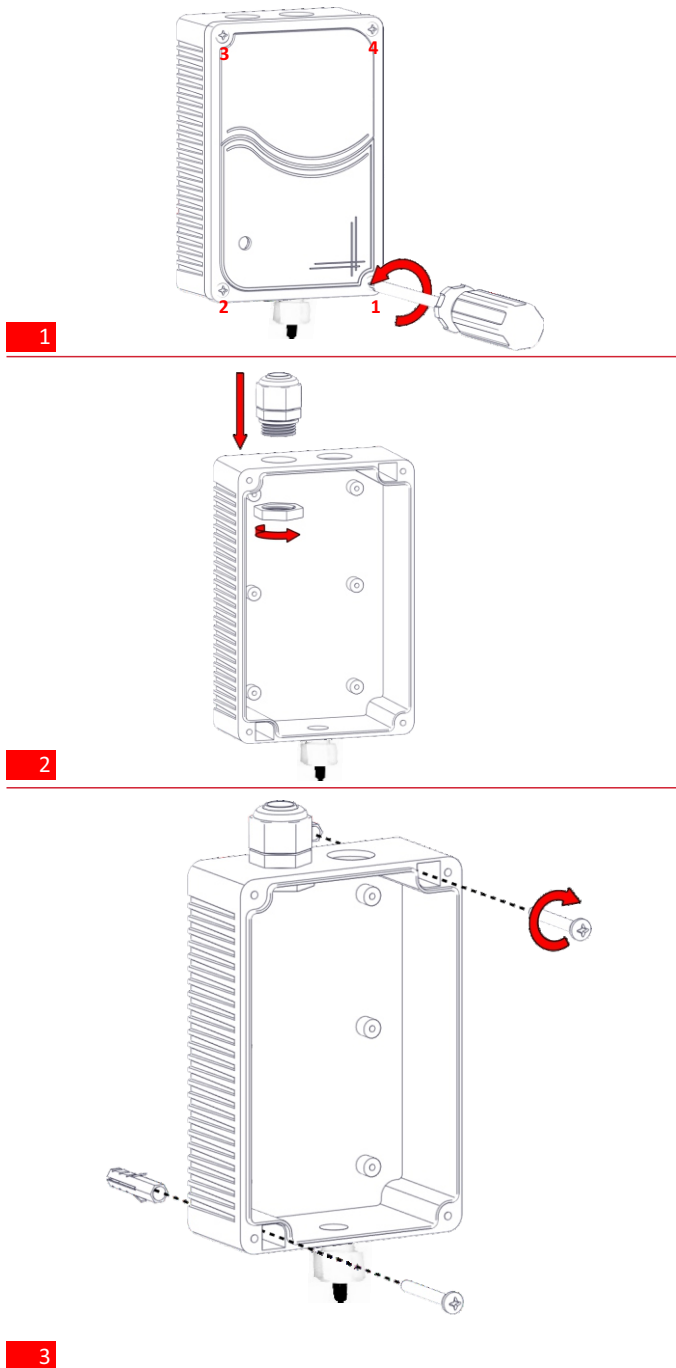
MAINTENANCE & FUNCTIONAL TESTING

The detector has fault diagnosis function, which automatically informs you through the onboard LED when detector replacement is required. The indication LED blinks every 7 seconds. In normal operation it blinks 1 time and if there is a failure it blinks 3 times. These functions combined with periodic manual testing ensure maximum security level. It is suggested to carry out a test every 6 months or after a change in the position of the sensor.

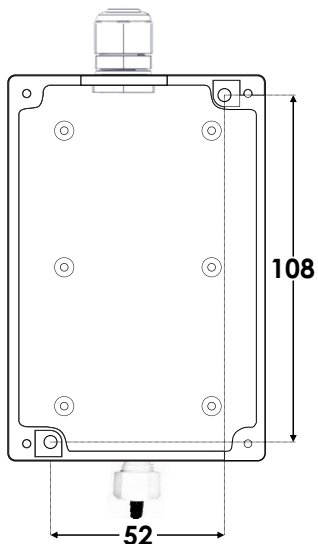
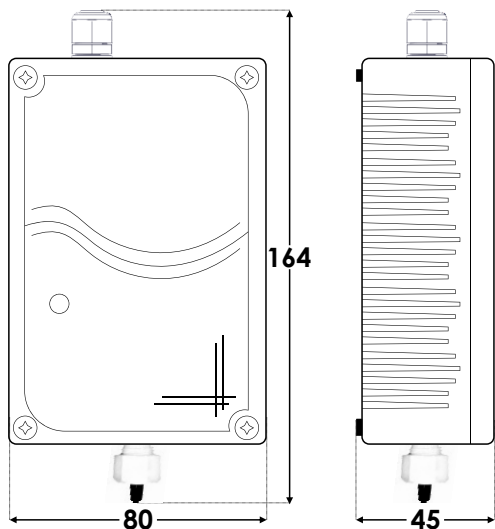
CAUTION !!

After installation the device must not be covered with dust or be painted or anything else happen that will block the air to get to the sensor. Special attention must be given during the installation and the use of the device, since the user assumes full responsibility for proper operation afterwards.

Installation Instructions




Dimensions (mm)



Technical Characteristics

BS-661/A

OPERATION VOLTAGE	17-30V DC
START UP POWER CONSUMPTION	1mA for 2 sec
STANDBY CONSUMPTION	90µA
ALARM CONSUMPTION	12mA (with activated on board LED)
TEMPERATURE SENSITIVITY	57 °C
CLASS	A2R
INDICATORS	Alarm LED
OUTPUT	To panel / to external LED (BS-572)
DEGREES OF COVER PROTECTION	IP65
PRODUCED IN ACCORDANCE WITH	EN 54-5
OPERATING TEMPERATURE RANGE	-40 to 70 °C
RELATIVE HUMIDITY	Up to 95%
CONSTRUCTION MATERIALS	ABS/PC
EXTERNAL DIMENSIONS (L X W X H)	164 x 80 x 45mm
TYPICAL WEIGHT (NET/GROSS)	140 /185 gr.
GUARANTEE	2 years

BS-661/A Waterproof heat of rise detector	CE 1922
EN 54-5:2017+A1:2018 DoP: 921661001_59_001 1922 - CPR - 1968	23
 olympia-electronics SAFETY & SECURITY SYSTEMS <i>for a safer world</i>	EGINIO PIERIAS 60300 GREECE

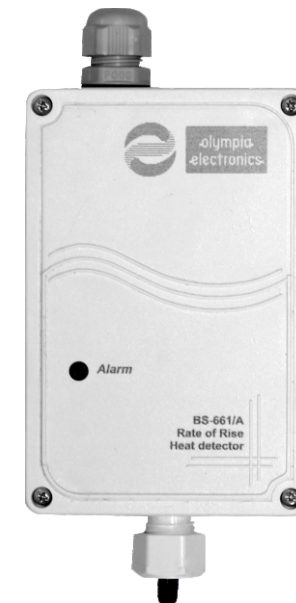
Warranty

Olympia Electronics guarantees the quality, condition and operation of the goods. The period of warranty is specified in the official catalogue of Olympia Electronics and also in the technical leaflet, which accompanies each product. This warranty ceases to exist if the buyer does not follow the technical instructions included in official documents given by Olympia Electronics or if the buyer modifies the goods provided or has any repairs or re-setting done by a third party, unless Olympia Electronics has fully agreed to them in writing. Products that have been damaged can be returned to the premises of our company for repair or replacement, as long as the warranty period is valid. Olympia Electronics reserves the right to repair or to replace the returned goods and to or not charge the buyer depending on the reason of deflection. Olympia Electronics reserves the right to charge or not the buyer the transportation cost.



72nd km. O.N.R. Thessaloniki-Katerini
P.C. 60300 P.O. Box 06 Eginio Pierias Greece

www.olympia-electronics.com
info@olympia-electronics.gr



BS-661/A

**WATERPROOF
HEAT OF RISE DETECTOR**

Thank you for your trust in our products
Olympia Electronics - European manufacturer