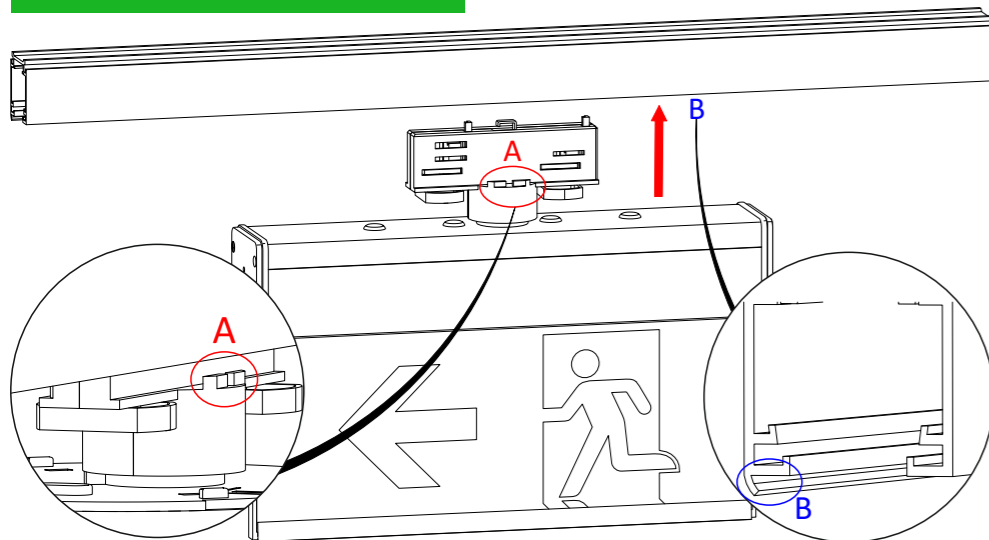


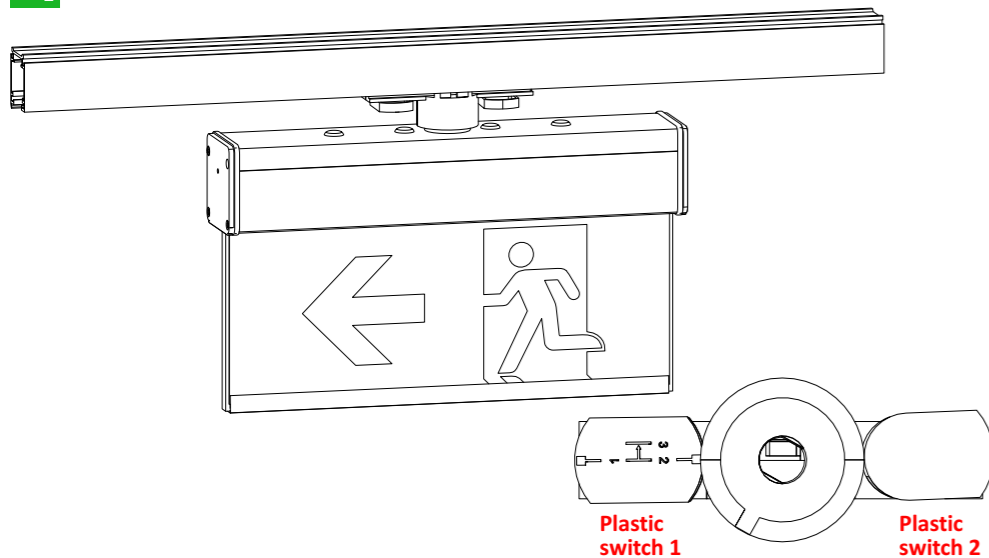
Installation to the track system



Install the luminaire onto the track system. Ensure that the two plastic switches are expanded. Make sure that point A of the adapter and point B of the track are facing opposite directions to ensure correct installation orientation.

Note: The adapter is only compatible with 4-phase track systems.

1



Rotate the two plastic switches to lock the adapter onto the track.

Note: Plastic switch 2 is used solely to secure the adapter to the track, while plastic switch 1 is used to select the phase on which the luminaire will operate.

2

NOTE!!
After finishing the installation you must power the luminaire for at least 24 hours in order to completely charge the battery. The rated autonomy duration can be achieved after that time.

NOTE: LED= Light Emitting Diode

LABELING EXPLANATION:

X: Self contained

1: Maintained/Non maintained operation (*)

A: Including test device

E: With non-replacable lamp(s) and/or battery

F: Automatic test gear complying with IEC 61347-2-7 denoted EL-T

G: Internally illuminated safety sign

60: 1 hour duration

180: 3 hours duration

480: 8 hours duration

X 1 A E F G 60

(*) **Maintained operation:** The luminaire lights its illumination source, when it is powered by the mains power supply or not.

Non Maintained operation: The luminaire lights its illumination source, only in power supply's failure.

ATTENTION

The light source of this luminaire is not user replaceable. When the light source reaches its end of life the whole luminaire shall be replaced.

Technical Characteristics

	ZLD PRO-20	ZLD PRO-30
OPERATION VOLTAGE	220 - 240V AC / 50-60Hz	
MAXIMUM POWER CONSUMPTION	4.6W / 4.9VA	
SUPPLY CURRENT	23mA	
U-OUT	10V	
Prated (1h/3h/8h)	1.5W / 0.65W / 0.25W	
Irated (1h/3h/8h)	135mA/ 65mA /25mA	
MAX. OPERATION CIRCUIT VOLTAGE	13V	
WIRE CROSS SECTION	0.8 - 2.5mm ²	
MINIMUM POWER FACTOR	0.87	
INSULATION BETWEEN SUPPLY & CONTROL TERMINALS	Basic Insulation	
INSULATION BETWEEN SUPPLY & BATTERY CIRCUIT	Basic Insulation	
BATTERY (Ni-MH)	3.6V / 1500mAh	
BATTERY PROTECTION	Deep discharge and overcharge protection The control gear will recharge the battery normally after the test of 22.3	
MIN. MAX. DISCHARGE VOLTAGE	3V - 4.5V	
MIN. MAX. DISCHARGE CURRENT	80-605mA	
MIN. MAX. CHARGE CURRENT	100-120mA	
TRICKLE CHARGE VOLTAGE	4.6V-45mA	
MAX CHARGER VOLTAGE	4.9V	
INDICATIONS/CONTROLS	LED Fault, LED Charge / Test Button	
CHARGE TIME	24 hours	
MINIMUM DURATION	1 hour , 3 hours , 8 hours manually selected (default 1hour)	
LIGHT SOURCE	12 White LED	20 White LED
LIGHT SOURCE LUMINOUS FLUX (MAINS)	260lm	280lm
LIGHT SOURCE LUMINOUS FLUX (EMERGENCY)	1h: 260lm / 3h: 80lm / 8h: 30lm	1h: 280lm / 3h: 120lm / 8h: 40lm
DEGREES OF COVER PROTECTION	IP42	
PRODUCED IN ACCORDANCE WITH	EN 60598-1, EN 60598-2-22, EN 55015, EN 61547, EN 61000-3-2, EN 61000-3-3	
OPERATION TEMPERATURE RANGE	5 - 40°C	
CONTROL GEAR MAX. TEMPERATURE: tc	50°C at U3	62°C at Q3
RELATIVE HUMIDITY	Up to 95%	
CONSTRUCTION MATERIAL	Aluminium, ABS/PC, Acrylic Plate	
VIEWING DISTANCE (as safety sign)	20m	30m
EXTERNAL DIMENSIONS W/O ADAPTER (L x W x H)	268 x 52 x 156 mm	318 x 52 x 214 mm
WEIGHT	750gr	1000gr
GUARANTEE	3 years (1 year for the battery)	
CONTROL GEAR WITH AUTOMATIC TEST FUNCTION	EL-T	

LED Characteristics

MANUFACTURER	Olympia Electronics S.A.	
MODEL NUMBER	0505233	0101243
VOLTAGE RANGE	10V - 14V	8.4V - 12.4V
NOMINAL POWER (1h / 3h / 8h)	1.5W / 0.65W / 0.25W	1W / 0.30W / 0.10W
CONNECTIONS	Built-in main board	
TEMPERATURE (tc)	45°C max. across the board	

Warranty



72nd km. O.N.R. Thessaloniki-Katerini
P.C. 60300 P.O. Box 06 Eginio Pierias Greece
www.olympia-electronics.com
info@olympia-electronics.com



**SELF TESTING MAINTAINED/NON MAINTAINED
EDGE EMERGENCY ILLUMINATION SIGNS
FOR TRACK LIGHT SYSTEM**



**Thank you for your trust in our products
Olympia Electronics - European manufacturer**

Package Contents

- 1 Luminaire with adapter
- 1 Set screws for luminaire
- 4 Pictograms (R/L/DR/DL)
- 1 Manual

General

These devices are used indoors (ta 40°C) in places where emergency light is needed. Each device must be permanently connected to mains power supply. In normal operation the battery is charging. In case of a mains power supply failure, the device enters emergency mode and the illumination LED turns on. When the mains power supply is restored the device turns to normal operation.

Manual Operational Test

By pressing the test button briefly an operation test is initiated. The light source and the emergency circuit of the device are tested. The manual test can be conducted only if the mains power supply and the battery are connected. During this test period the CHARGE LED starts blinking fast. The battery must have adequate charge. This test lasts for 3 seconds.

Manual Autonomy Test

A duration test can be conducted by pushing the button steadily for 5 to 10 seconds. In order to be performed, the mains power supply should be connected and the battery should be fully charged. The luminaire enters emergency mode, the charge LED starts blinking fast. Its duration is the stated autonomy duration of the luminaire. If at the end of the test the autonomy is lower than the nominal, the Fault LED will lit and battery needs to be replaced. If the result of the test is good then the luminaire enters charging mode and the Charge led starts blinking fast until the battery is fully charged.

Automatic Operational Test

This test includes all the operations that are provided in Manual Operational Test and is conducted automatically every 15 days and lasts 3 seconds.

Automatic Autonomy Test

The Automatic Autonomy Test is conducted every 6 months and measures the device's back up operation and emergency duration. This test includes all functions of the Manual Autonomy Test.

Dimming Mode

By pressing the test button continuously for 15 seconds, when luminaire is connected to mains, the luminosity will be reduced to 20% of its total luminance. In emergency mode the light output will remain unchanged. To restore the original settings, repeat the above procedure. The dimming setting remains stored in the luminaire even when both mains and battery voltages are disconnected.

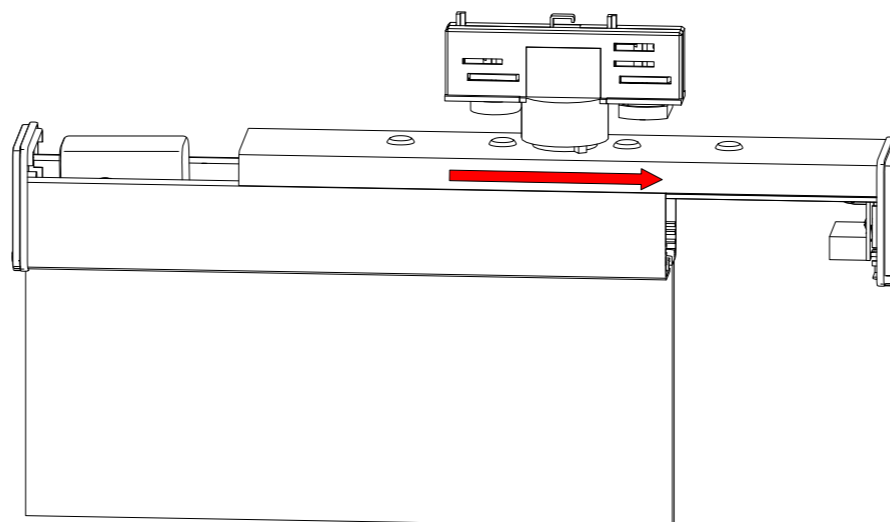
ATTENTION!!!

1. Operations for installation, maintenance or testing must be done by authorized personnel only.
2. Always use in any case round mains cable, with a diameter of 5-10mm (H05RN-F type 3x1mm² or any other type, at least equal to it's mechanical and electrical properties). ATTENTION!! The cable must not be deformed in any way (This requirement is important to ensure the IP rating).
3. The device must be connected to the mains power supply through a circuit breaker that is depends on the total line's power load.
4. In case of battery replacement, it must be replaced by the same type, by the manufacturer or a competent person.
5. In case of inactive use for a period greater than 2 months, disconnect the battery by pulling out the battery's connector.
6. If the luminaire no longer meets the rated duration of operation after the corresponding recharge period, the battery must be replaced.
7. It is not allowed to discard batteries in common trash bins, they must be discarded only in battery recycling points. Do not incinerate.

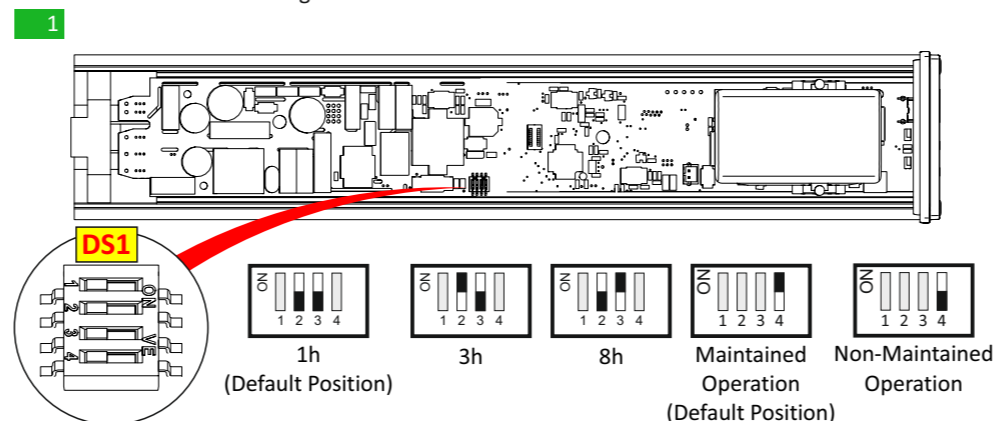
Indications LED Status

GREEN (charge)	RED (Fault)	Description
●	○	Normal
●	○	Charging (autonomy test not possible while charging)
○	○	Mains off (battery not connected or charger fault)
●	○	Autonomy Test (Duration: 1h, 3h, 8h)
∅	●	Battery Fault
●	○	Operational Test (Duration: 3s)
∅	●	Light Source Fault
∅	●	Battery Fault & Light Source Fault
Note:		● Permanently ON ● Fast Blink ● Slow Blink ○ Off ∅ Non relevant

Installation



Slide the luminaire's mounting base to disassemble it.



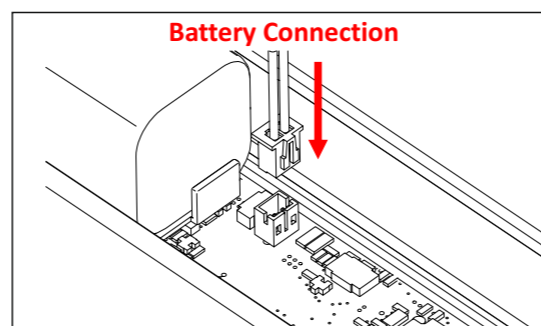
The user can select one of the three available minimum autonomy durations: 1 hour, 3 hours, or 8 hours. Selection is made using Switches 2 and 3 of DS1.

The package includes two additional labels: one for a 3-hour duration (180) and one for an 8-hour duration (480).

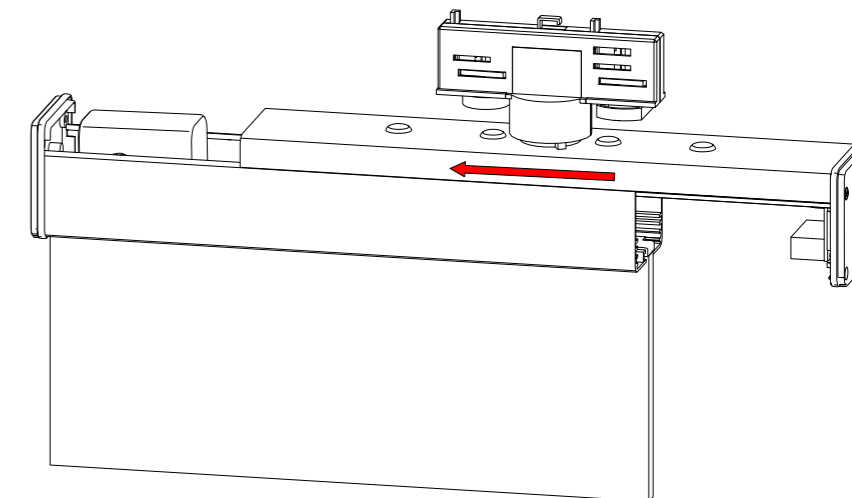
Depending on the selected duration, the installer must replace the default 1-hour (60) label with the appropriate label. Ensure that the label is correctly oriented.

The luminaire's maintained or non-maintained operation is controlled via Switch 4 of DS1.

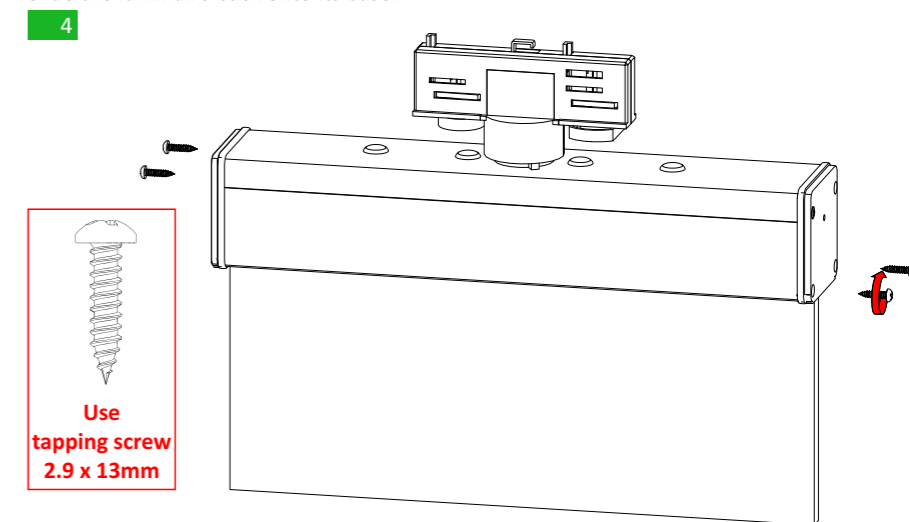
ATTENTION! Selection must be performed while the luminaire is disconnected from both the AC power supply and the battery.



Connect the battery to the appropriate connector on the PCB.



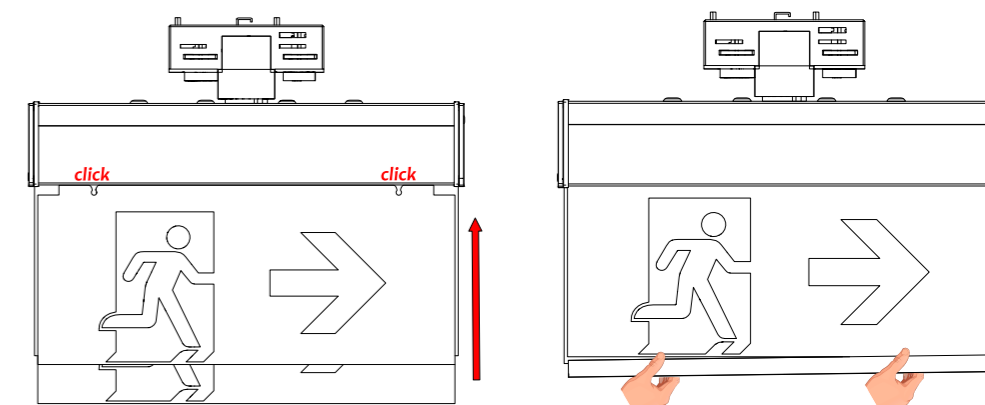
Slide the luminaire back onto its base.



Use the included screws to secure the luminaire onto the mounting base.

Note: The power connection is already attached to the luminaire. The luminaire is ready for use once it is connected to the track system.

Pictogram Installation



1. Install the desired pictograms and push upwards until you hear a "click".
2. Attach the plastic retaining clip to secure the pictograms in place.

Battery Replacement

Note: This procedure must be carried out only by a competent person and after disconnecting the mains supply.

1. Detach the luminaire from the track rail system.
2. Follow step 5 of the installation instructions and loosen the screws.
3. Follow step 1 of the installation instructions and disassemble the base from the luminaire.
4. Disconnect the battery and install a new one of the same type and specifications.
5. Reassemble the luminaire.