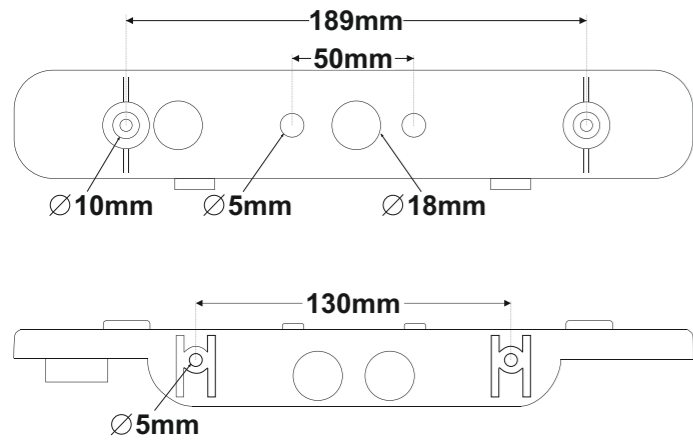
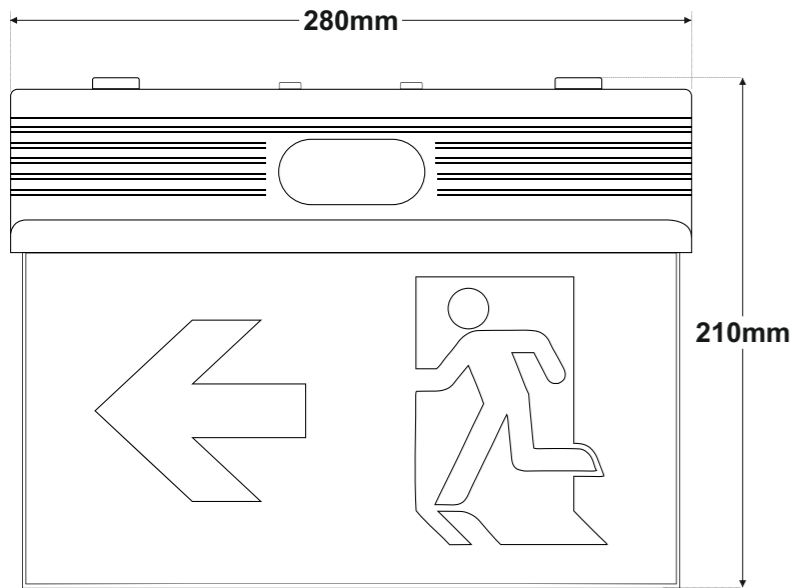


## Dimensional Drawing (mm)



**NOTE:** LED= Light Emitting Diode

### LABELING EXPLANATION:

**X:** Self contained

**1:** Maintained operation (\*)

**A:** Including test device

**G:** Internally illuminated safety sign


**60:** 1 hour duration

**X 1 A G 60**

(\*) **Maintained operation:** The luminaire lights its illumination source, when it is powered by the mains power supply or not.

**Non Maintained operation:** The luminaire lights its illumination source, only in mains power supply's failure.

### ATTENTION!!!

 The light source contained in this luminaire shall only be replaced by the manufacturer, or his agent, or a similar qualified person.

**NOTE!** The light source is non-user replaceable.

Scan the QR Code to watch the disassembly procedure of the luminaire.



## Technical Characteristics

PLD-25/SC	
OPERATION VOLTAGE	220-240V AC / 50-60Hz
MAXIMUM POWER CONSUMPTION	4.3W / 4.7VA
BATTERY (Super Capacitor)	2.7V/500F
BATTERY PROTECTION	Deep discharge and overcharge protection / the control gear will recharge the battery normally after the test of 22.3
INSULATION BETWEEN SUPPLY & CONTROL TERMINALS	Basic insulation
INDICATIONS/CONTROLS	LED Charge, Lamp Fault LED, Battery Fault LED / Test Button
CHARGE TIME	<6 hours
MINIMUM DURATION	1 hour
LIGHT SOURCE	12 white LEDs
LIGHT SOURCE LUMINOUS FLUX (MAINS / EMERGENCY)	73lm/20lm
VIEWING DISTANCE	26m
DEGREES OF COVER PROTECTION	IP44
PRODUCED IN ACCORDANCE WITH	EN 60598-1, EN 60598-2-22, EN 55015, EN 61547, EN 61000-3-2, EN 61000-3-3
OPERATION TEMPERATURE RANGE	-40 to 65 °C
RELATIVE HUMIDITY	Up to 95%
CONSTRUCTION MATERIAL	Fire retardant ABS, Acrylic plate
EXTERNAL DIMENSION (L x W x H)	280x48x210mm
WEIGHT	850gr.
GUARANTEE	10 years

## LED Characteristics

MANUFACTURER	Olympia Electronics S.A.
MODEL NUMBER	1402163
VOLTAGE RANGE	2.9-3.6V DC
NOMINAL POWER	780mW
CONNECTIONS	Non reversible connection between main pcb and led module
TEMPERATURE (tc)	45 °C max. across the board

## Warranty

Olympia Electronics guarantees the quality, condition and operation of the goods. The period of warranty is specified in the official catalogue of Olympia Electronics and also in the technical leaflet, which accompanies each product. This warranty ceases to exist if the buyer does not follow the technical instructions included in official documents given by Olympia Electronics or if the buyer modifies the goods provided or has any repairs or re-setting done by a third party, unless Olympia Electronics has fully agreed to them in writing. Products that have been damaged can be returned to the premises of our company for repair or replacement, as long as the warranty period is valid.

Olympia Electronics reserves the right to repair or to replace the returned goods and to or not charge the buyer depending on the reason of deflection. Olympia Electronics reserves the right to charge or not the buyer the transportation cost.



72nd km. O.N.R. Thessaloniki-Katerini  
P.C. 60300 P.O. Box 06 Eginio Pierias Greece  
[www.olympia-electronics.com](http://www.olympia-electronics.com)  
[info@olympia-electronics.gr](mailto:info@olympia-electronics.gr)



## PLD-25/SC

### SELF TESTING MAINTAINED EMERGENCY ILLUMINATION SIGNS



Thank you for your trust in our products  
Olympia Electronics - European manufacturer

## Package Contents

- 1 Luminaire
- 1 Mounting accessories
- 2 Set of Pictograms (R/L/DR/DL)
- 1 Manual

## General

These devices are used indoors (ta 40°C) in places where emergency light is needed. Each device must be permanently connected to mains power supply. In normal operation the battery is charging. In case of a mains power supply failure, the device enters emergency mode and the illumination LED turns on. When the mains power supply is restored the device turns to normal operation.

**Manual Operational Test**  
By pressing the test button an operation test is initiated. The light source and the emergency circuit of the device are tested. The manual test can be conducted only if the mains power supply and the battery are connected. During this test period all indications LED are OFF.

**Automatic Operational Test**  
This test includes all the operations that are provided in manual operational test and is conducted automatically every 15 days and lasts 3 seconds.

**Automatic Autonomy Test**  
The Automatic Autonomy Test is conducted every 6 months and measures the device's back up operation and emergency duration. In order to be performed, the mains power supply and the battery should be connected and fully charged. If the battery is not fully charged, the test is postponed until the battery is completely charged. If during this test, the autonomy is less than nominal then the battery fault led turned on continuously and the battery must be replaced.

**Resetting Errors**  
Push the Test button for more than 5 seconds, to delete all the indicated LED errors. Then the device enters regular operation mode.

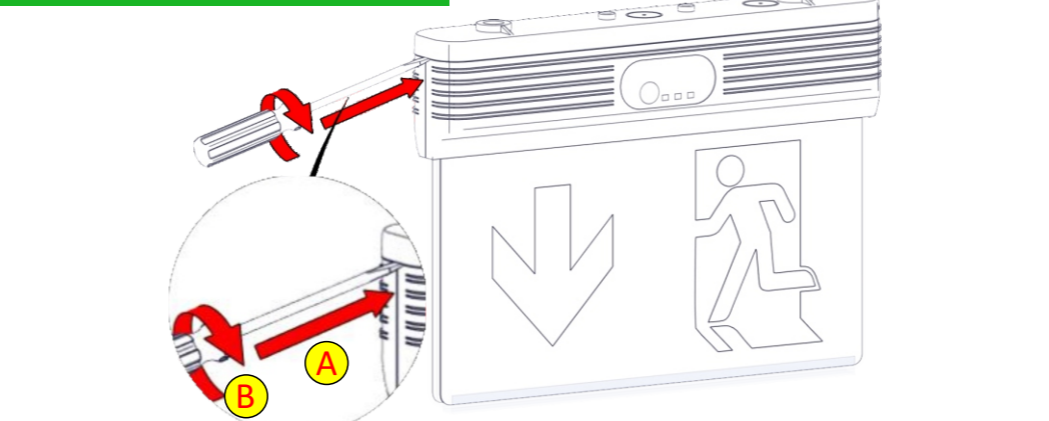
**Changing The Operating Mode**  
Press and hold the TEST button for more than 5 seconds. First, the luminaire will erase the errors (3 LED indicators will light in succession) and after 2 seconds the LED Lamp Fault will remain lit steadily. When the TEST button is released, the luminaire will change between maintained or non -maintained mode. The change is recorded permanently in it's memory.

- ATTENTION!!!**
1. Operations for installation, maintenance or testing must be done by authorized personnel only.
  2. Always use in any case round mains cable, with a diameter of 5-10mm (H05RN-F type 2x1mm<sup>2</sup> or any other type, at least equal to it's mechanical and electrical properties). ATTENTION!! The cable must not be deformed in any way (This requirement is important to ensure the IP rating).
  3. The device must be connected to the mains power supply through a circuit breaker that depends on the total line's power load.
  4. In case of the super capacitor replacement, it must be replaced by the same type, by the manufacturer or a competent person.
  5. In case of inactive use for a period greater than 2 months, disconnect the battery by pulling out the battery's connector.
  6. If the luminaire no longer meets the rated duration of operation, after the corresponding recharge period, the the super capacitor must be replaced.
  7. It is not allowed to discard batteries into common trash bins, they must be discarded only in battery recycling points. Do not incinerate.

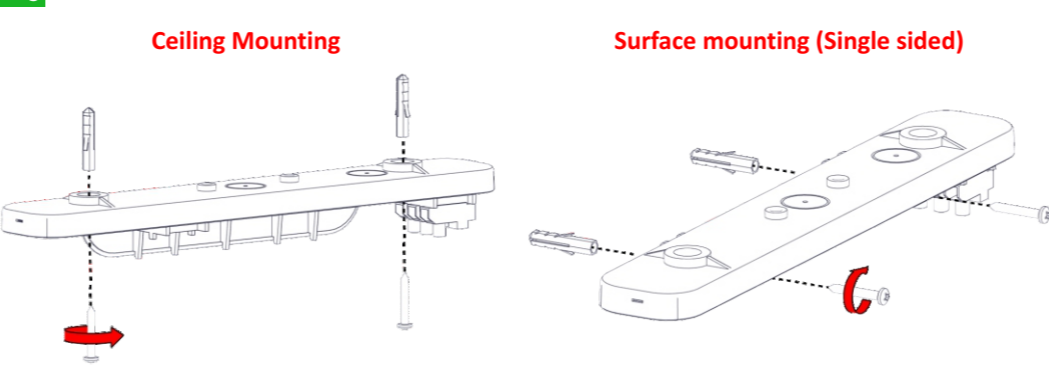
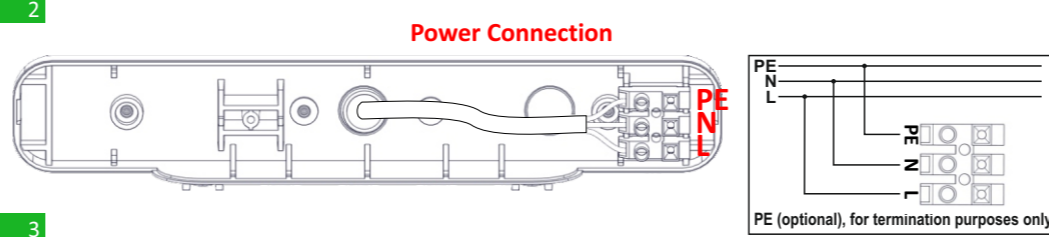
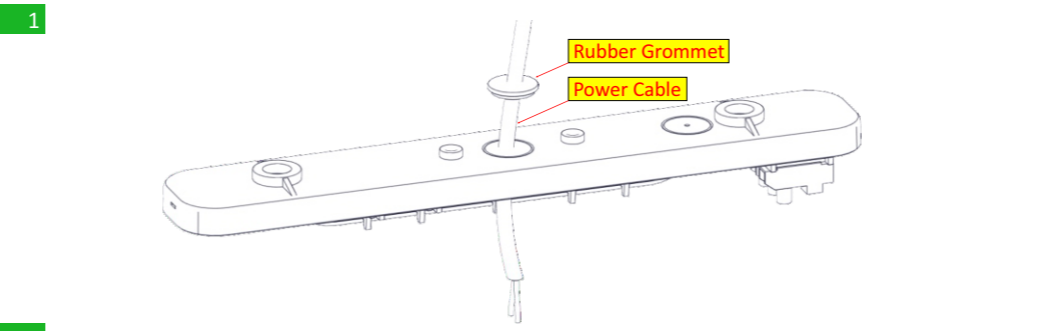
## Indications LED Status

CHARGE (green)	LAMP FAULT (red)	BATT. FAULT (red)	Description	● Permanently ON	○ Off
●	∅	∅	Good charge condition		
○	∅	∅	No Battery (No charging current or disconnected battery)		
∅	●	∅	Light source fault		
●	∅	●	Autonomy or battery fault		
○	∅	●	No charging current or disconnected battery		

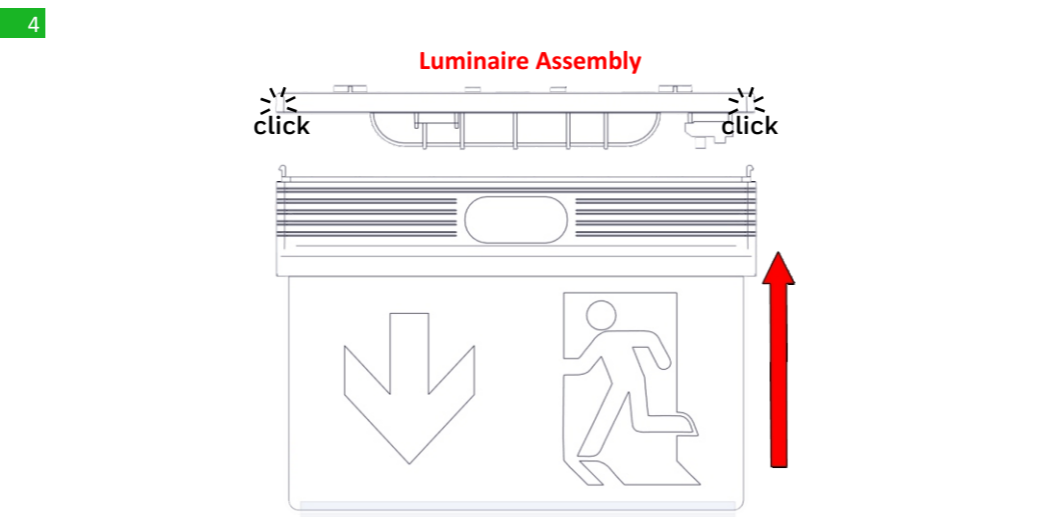
## Installation Instructions



Refer to page 4 and scan the QR Code to watch the disassembly procedure.

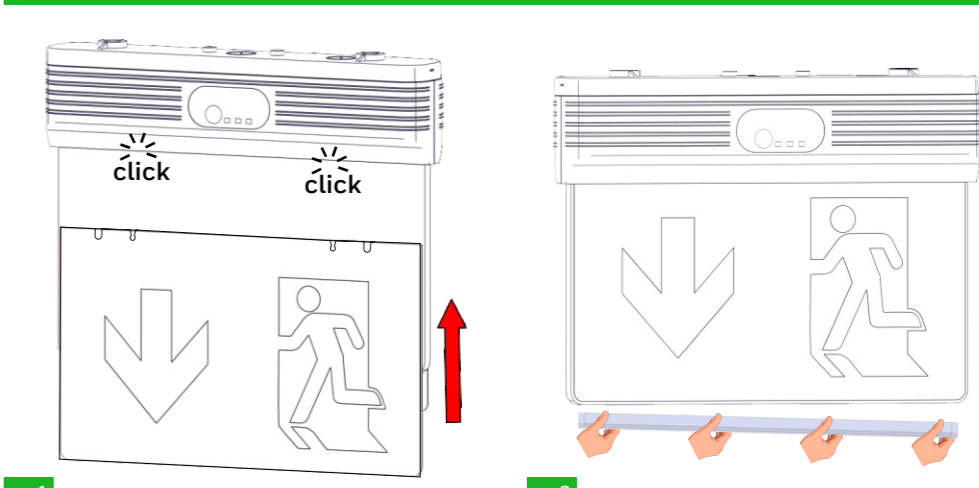


Install the included spacers, if needed.



**NOTE!!** After finishing the installation you must power the luminaire for at least 24 hours for battery charging to perform the nominal autonomy.

## Pictogram Installation



## Battery Replacement

1. Power off the luminaire.
2. Dismantle the luminaire (Step 1 of installation instructions).
3. Remove the old super capacitor and place a new one of the same type and characteristics.
4. Assembly the luminaire.
5. Power on the luminaire.

## Optional Mounting Methods (Upon Request)

