



ADDRESSABLE SELF TESTING MAINTAINED EMERGENCY ILLUMINATION SIGNS WITH WHITE LEDs



TECHNICAL CHARACTERISTICS (for LED MODULE Specifications see page 5)

	ZLD-28/EM/ADR	ZLD-34/EM/ADR	ZLD-44/EM/ADR
MAINS VOLTAGE	220-240V AC/50-60Hz		
MAXIMUM POWER CONSUMPTION	3.8W / 6.5VA	4W / 6.7VA	4.3W / 6.9VA
BATTERY (Ni-MH)	3.6V/1.5Ah		
BATTERY PROTECTION	Overcharging and deep discharging protection		
INDICATIONS	Charge LED, Lamp Fault LED, Battery Fault LED		
RECHARGING TIME	24h		
MINIMUM EMERGENCY DURATION	3h		
LIGHT SOURCE INTENSITY (230V) / (emerg.)	125lm / 125lm	145lm / 125lm	170lm / 125lm
DEGREES OF COVER PROTECTION	IP 40		
PRODUCED IN ACCORDANCE WITH	EN 60598-1, EN 60598-2-22, EN 55015, EN 61547, EN 61000-3-2, EN 61000-3-3, EN 1838		
OPERATION TEMPERATURE RANGE	5 to 40 °C		
RELATIVE HUMIDITY	Up to 95%		
CONSTRUCTION MATERIALS	Aluminum, plexiglas		
EXTERNAL DIMENSIONS (LxWxH)	290x172x38mm	350x242x38mm	450x295x38mm
TYPICAL WEIGHT	780gr.	1145gr.	1585gr.
GUARANTEE	3 years (1 year for the battery)		

Thank you for your trust in our products Olympia Electronics - European manufacturer

GENERAL

These luminaires are used indoors (ta 40°C) where emergency light is needed.

Each luminaire must be permanently connected to mains power supply.

In normal operation the led strip lights and the battery is charging.

In case of a mains power supply failure the luminaire will light the led strip automatically in emergency mode (powered by its battery). When the mains power supply is restored the device turns to normal operation.

Address Operation

The luminaires can be connected to a GR-6500 address panel. For address operations refer to the installation manual of the panel.

For address connections see page 5.

INSTALLATION

To install the illumination sign you must follow the installation instructions on pages 2,3 and 4.

Battery Charging

The battery charging is completely controlled. Thereby, the best possible battery maintenance is achieved, as well as the elongation of its duration. When the battery has completely charged, it charges with a maintenance current.

Battery Cut-off

The luminaire enters in this operation when the mains power supply fails and battery has lost its energy. During this operation the luminaire enters the idle state and battery consumption is

negligible, in order to be protected from deep discharge.

Manual Test

This test can be done by pressing the test button. The light source and the emergency circuit of the device is monitored. The manual test can be conducted only if the mains power supply and the battery is connected. During this test period all indication LEDs are OFF.

Tests

The illumination source and the autonomy tests are programed by the control panel. The tests results are send to the control panel.

If the luminaire is not connected to GR-6500 panel, the following automatic tests executed:

Automatic Operational Test

This test includes all the operations that provide the manual test and is conducted automatically every 15 days. In order to be performed, the mains power supply and the battery should be connected.

Automatic Autonomous Test

The Automatic Autonomous Test is conducted and measures the device's back up operation and emergency duration. This test is conducted automatically every 6 months. In order to be performed, the mains power supply and the battery should be connected and fully charged. If the battery is not fully charged, the test is postponed until the battery is completely

charged. If during this test, the autonomy is less than nominal then the battery fault led turned on continuously and the battery must be replaced.

Back Up Operation

The autonomous duration of battery during emergency mode is at least the one that is stated in the list of the technical characteristics. During emergency mode, a light source test is also performed.

Resetting Errors

Push the Test button for more than 5 seconds, to delete all the indicated LED errors. Then the device enters regular operation mode.

Changing The Operating Mode

Press and hold the TEST button for more than 5 seconds. The luminaire will erase first the errors (3 LED indicators will light in succession) and after 2 seconds the LED Lamp Fault will remain lit steadily. When the TEST button is released, the luminaire will change between maintained or non-maintained mode. The change is recorded permanently in its memory.

Indication LED status (with connected mains power supply).

Charge

On: Good charge condition.

Off: No battery (No charging current or

disconnected battery).

Lamp Fault

On (with LED strip off): Faulty LED strip (must be replaced).

On (with LED strip on): Problem in the back up circuit of the LED strip (must be checked by an authorized personnel).

Off: Good LED strip.

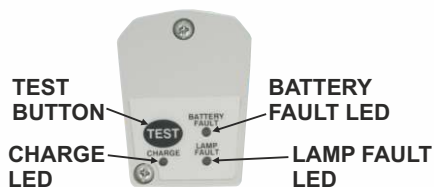
Battery Fault

Off: Battery OK.

Blink (With Charge LED ON): Autonomy or low battery problem (the battery must be replaced).

Blink (With Charge LED Off): No charging current or disconnected battery.

INDICATION LEDs



INSTALLATION INSTRUCTIONS

ELECTRICAL CONNECTIONS

- 1 Dismantle the luminaire by pushing the lock/unlock button and slide the luminaire to the right and pull it down.
- 2 Pass through the cables from the entry hole and connect them as shown on the picture (the battery is already connected).
- 3 Place upwards the luminaire and slide it to the left. The lock/unlock button appears indicating that the luminaire is securely installed.
- 4 Power on the device.

FLAG MOUNTING INSTALLATION (optional)

Install the flag mounting base on the wall (page 3) and perform the respective steps of the electrical connections.

SURFACE MOUNTING ON A WALL (single sided)

Install the included bracket on the wall (page 3) and perform the respective steps of the electrical connections.

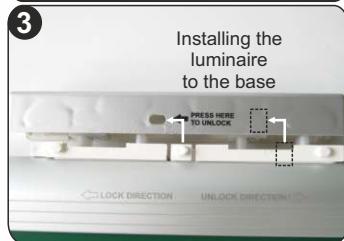
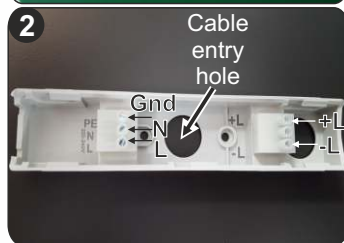
CEILING INSTALLATION

Install the mounting base on the ceiling (page 3) and perform the respective steps of the electrical connections.

HANGING INSTALLATION (optional)

Install the mounting base (tube) on the ceiling (page 4) and perform the respective steps of the electrical connections.

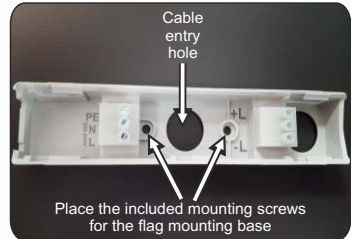
NOTE!! After finishing the installation you must power the luminaire at least for 24 hours for battery charging to perform the nominal autonomy.



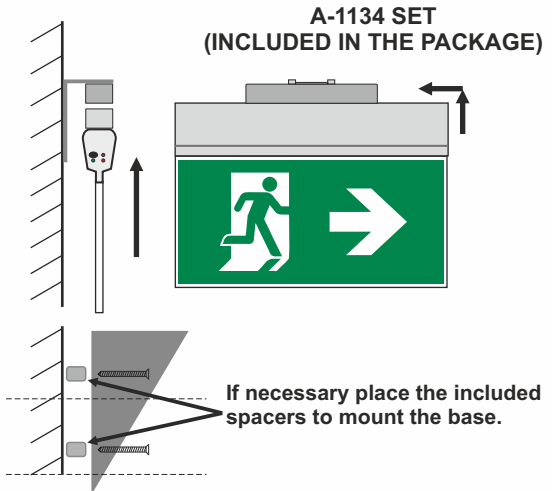
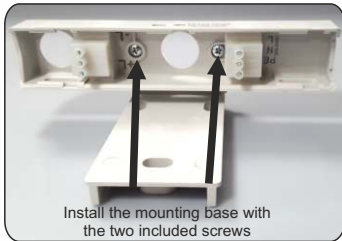
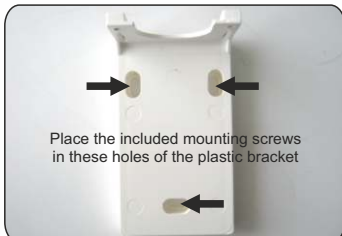
MOUNTING METHODS

FLAG MOUNTED ON A WALL

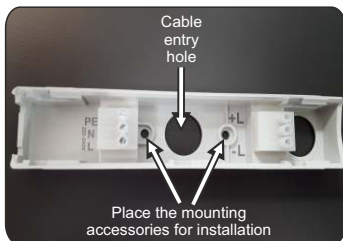
A-1133 SET
(OPTIONAL AFTER REQUEST)
only for ZLD-28/EM, ZLD-34/EM



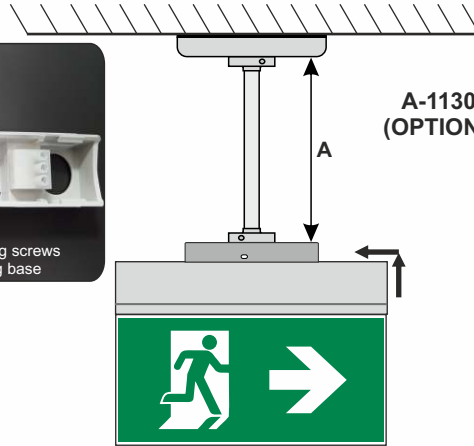
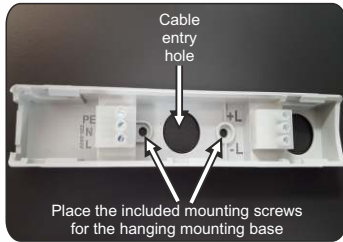
SURFACE MOUNTING ON A WALL (single side luminaire)



CEILING MOUNTED

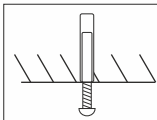


HANGING INSTALLATION



A-1130, A-1131, A-1132 SET
(OPTIONAL AFTER REQUEST)

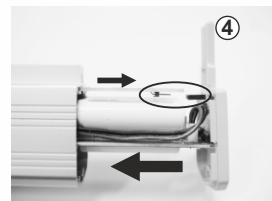
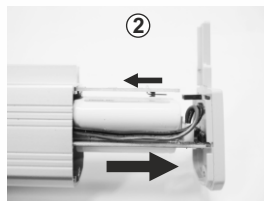
	Tube
A-1130	A=1m
A-1131	A=0.5m
A-1132	A=0.25m



GENERAL!!

Measure the distance of the mounting holes and after the drilling place on these spots the mounting plugs and fasten the base with the mounting screws.

Battery replacement process



1. Unfasten the 2 screws.
2. Slide out carefully the electronic parts and remove the marking panel. Slide to the left the led strip to remove the old battery.
3. Remove the old battery and install the new one with its battery's connector to the appropriate P.C.B connector.
4. Slide carefully to the right the led strip to connect it to the respective connector. Slide in carefully all the electronic parts and refit the marking panel.
5. Fasten the removed screws in step 1.

WARNING!! Use a maximum torque of 0,25Nm to tighten the screws.

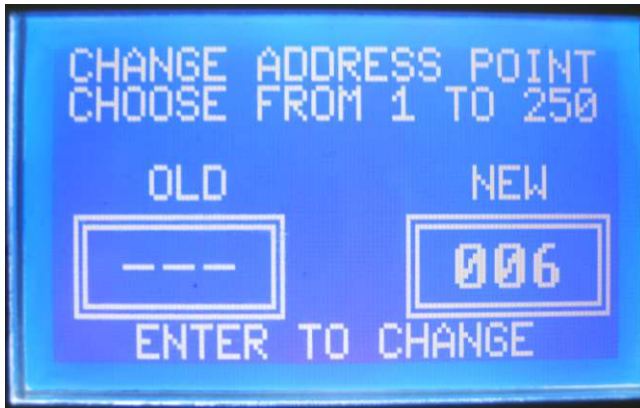
NOTE!!

In case of battery replacement the used battery must be replaced with a new one of the same type, by the manufacturer or by a competent person.

Programming the address of a luminaire

To program or change the address of a luminaire you must connect the luminaire to the panel alone and do the following steps:

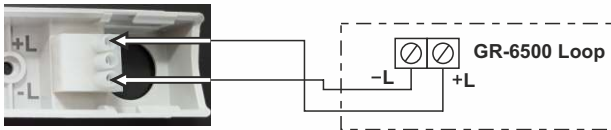
- 1) The luminaire must not be connected with the mains power supply not with the battery.
- 2) One end of the cable is connected to the luminaire and the other end to the panel GR-6500 as shown on the picture above.
- 3) You must go to the GR-6500 menu:
TECHNICIAN MENU => SETTINGS=> CHANGE ADDRESS POINT



- 4) Set the new address using the ↑ UP and ↓ DOWN keys and press enter when done.

Address connections

- a) To connect the address cables, follow the steps 1, 2 of the installation instructions (page 2).
- b) Follow the steps 3, 4 of the installation instructions (page 2) and address the luminaire by using the panel GR-6500 (refer to its operation manual).



LED MODULE CHARACTERISTICS

	ZLD-28/EM/ADR	ZLD-34/EM/ADR	ZLD-44/EM/ADR
Manufacturer	Olympia Electronics S.A.		
Model Number	1111153	1211153	1311153
Voltage Range	8.5-10.5 VDC		
Nominal Power	1200mW	1400mW	1600mW
Connections	Non reversible connection between main pcb and led module		
Temperature (tc)	45°C max. across the board		

WARRANTY

Olympia Electronics guarantees the quality, condition and operation of the goods. The period of warranty is specified in the official catalogue of Olympia Electronics and also in the technical leaflet, which accompanies each product. This warranty ceases to exist if the buyer does not follow the technical instructions included in official documents given by Olympia Electronics or if the buyer modifies the goods provided or has any repairs or re-setting done by a third party, unless Olympia Electronics has fully agreed to them in writing. Products that have been damaged can be returned to the premises of our company for repair or replacement, as long as the warranty period is valid. Olympia Electronics reserves the right to repair or to replace the returned goods and to or not charge the buyer depending on the reason of deflection. Olympia Electronics reserves the right to charge or not the buyer the transportation cost.

HEAD OFFICE

72nd km. O.N.R. Thessaloniki-Katerini
P.C. 60300 P.O. Box 06 Eginio Pierias Greece
www.olympia-electronics.gr
info@olympia-electronics.gr

General:

1. Operations for installation, maintenance or testing must be done by authorized personnel only.
2. The device must be connected to the mains power supply through a fuse dependent by the total amount of the line's power load.
3. In case of inactive use for a period greater than 2 months, disconnect the battery by pulling out the battery's connector.



4. **It is not allowed to discard batteries in to common trash bins, they must be discarded only in battery recycling points. Do not incinerate.**

NOTE: LED= Light Emitting Diode

LABELING EXPLANATION:

X: Self contained **1:** Maintained (*) **A:** Including test device **B:** Including remote rest mode
C: Including inhibiting mode **G:** Internally illuminated safety sign **180:** 3 hours duration

(*) Maintained operation: The luminaire lights its illumination source, when it is powered by the mains power supply or not.

Non Maintained operation: The luminaire lights its illumination source, only in power supply's failure.



The light source contained in this luminaire shall only be replaced by the manufacturer, or his agent, or a similar qualified person.

NOTE! *The light source is non-user replaceable.*