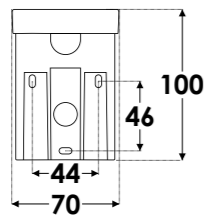
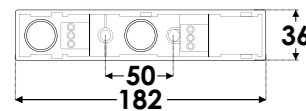
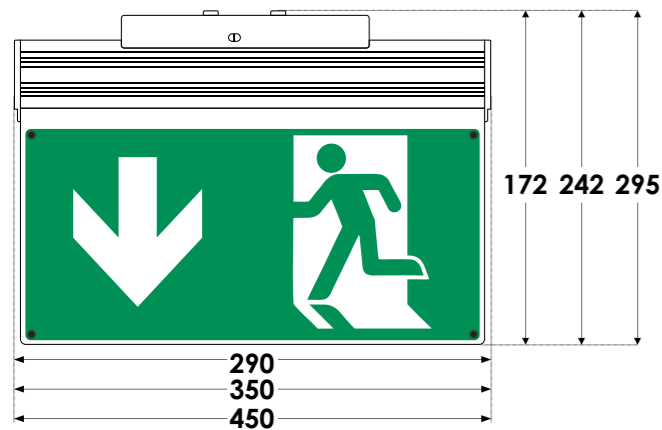


## Dimensional Drawings (mm)



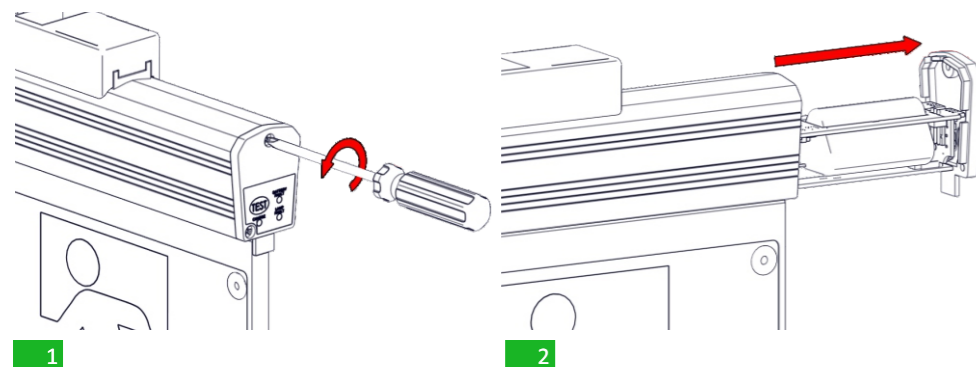
ZLD-28/EM/ADR: 290 x 38 x 172mm

ZLD-34/EM/ADR: 350 x 38 x 242mm

ZLD-44/EM/ADR: 450 x 38 x 295mm

## Battery Replacement

It can be done only by a competent person and after the mains interruption.



Remove the old battery and place a new one of the same type and characteristics and assembly the luminaire.

**WARNING!!** Use a maximum torque of 0,25Nm to tighten the screws.

**NOTE:** LED= Light Emitting Diode

**LABELING EXPLANATION:**

X: Self contained

1: Maintained operation (\*)

A: Including test device

B: Including remote test mode

C: Including inhibiting mode

G: Internally illuminated safety sign

180: 3 hours duration

X 1 A B C G 180

(\*) **Maintained operation:** The luminaire lights its illumination source, when it is powered by the mains power supply or not.

**Non Maintained operation:** The luminaire lights its illumination source, only in mains power supply's failure.

**ATTENTION!!!**

The light source of this luminaire is not replaceable when the light source reaches its end of life the whole luminaire shall be replaced.

## Technical Characteristics

	ZLD-28/EM/ADR	ZLD-34/EM/ADR	ZLD-44/EM/ADR
OPERATION VOLTAGE		220-240V AC / 50-60Hz	
MAXIMUM POWER CONSUMPTION	3.8W / 6.5VA	4W / 6.7VA	4.3W / 6.9VA
SUPPLY CURRENT	28mA	29mA	30mA
U-OUT		19V	
EOFI	1.3	0.60	0.62
WIRE CROSS SECTION		0.3mm <sup>2</sup> - 3.3mm <sup>2</sup> (22-12AWG)	
BATTERY (NI-MH)		3.6V / 1.5 Ah	
INSULATION BETWEEN SUPPLY & BATTERY CIRCUIT		Basic insulation	
BATTERY PROTECTION	Deep discharge and overcharge protection / the control gear will recharge the battery normally after the test of 22.3		
MIN MAX. DISCHARGE VOLTAGE		3 - 4.2V	
MIN MAX. DISCHARGE CURRENT	270 - 360mA	270 - 370mA	255 - 360mA
Rated CURRENT @3.6V	310mA	315mA	290mA
MIN MAX. CHARGE CURRENT		140 - 165mA	
MAX CHARGE VOLTAGE		5V	
INDICATIONS	LED Charge, Lamp Fault LED, Battery Fault LED		
CHARGE TIME	24 hours		
MINIMUM DURATION	3h		
LIGHT SOURCE	18 white LEDs	21 white LEDs	24 white LEDs
LIGHT SOURCE LUMINOUS FLUX (MAINS / EMERGENCY)	125lm/125lm	145lm/125lm	170lm/125lm
DEGREES OF COVER PROTECTION	IP40		
PRODUCED IN ACCORDANCE WITH	EN 60598-1, EN 60598-2-22, EN 55015, EN 61547, EN 61000-3-2, EN 61000-3-3		
VIEWING DISTANCE	16m	30m	38m
OPERATION TEMPERATURE RANGE	5 to 40 °C		
RELATIVE HUMIDITY	Up to 95%		
CONSTRUCTION MATERIAL	Aluminum, Acrylic Plate, ABS/PC		
EXTERNAL DIMENSION (L x W x H)	290 x 38 x 172 mm	350 x 38 x 242 mm	450 x 38 x 295 mm
WEIGHT	780gr.	1145gr.	1585gr.
GUARANTEE	3 years (1 year for the battery)		
CONTROL GEAR WITH AUTOMATIC TEST FUNCTION	<b>EL-T</b>		
Controlgear classification in accordance with IEC 62034: with automatic test function			
The controlgear is suitable for LED modules only			
The controlgear has mains-connected windings of transformer			
The controlgear is proof against supply voltage polarity reversal			
The lamp controlgear relies upon the luminaire enclosure for protection against accidental contact with live part (7.2 BS EN 61347-2-7)			
Integrated SPD			

## LED Characteristics

	ZLD-28/EM/ADR	ZLD-34/EM/ADR	ZLD-44/EM/ADR
MANUFACTURER	Olympia Electronics S.A.		
MODEL NUMBER	1111153	1211153	1311153
VOLTAGE RANGE	8.5- 10.5V DC		
NOMINAL POWER	1200mW	1400mW	1600mW
CONNECTIONS	Non reversible connection between main pcb and led module		
TEMPERATURE (tc)	45 °C max. across the board		

## Warranty

Olympia Electronics guarantees the quality, condition and operation of the goods. The period of warranty is specified in the official catalogue of Olympia Electronics and also in the technical leaflet, which accompanies each product. This warranty ceases to exist if the buyer does not follow the technical instructions included in official documents given by Olympia Electronics or if the buyer modifies the goods provided or has any repairs or re-setting done by a third party, unless Olympia Electronics has fully agreed to them in writing. Products that have been damaged can be returned to the premises of our company for repair or replacement, as long as the warranty period is valid.

Olympia Electronics reserves the right to repair or to replace the returned goods and to or not charge the buyer depending on the reason of deflection. Olympia Electronics reserves the right to charge or not the buyer the transportation cost.



72nd km. O.N.R. Thessaloniki-Katerini  
P.C. 60300 P.O. Box 06 Eginio Pierias Greece

[www.olympia-electronics.com](http://www.olympia-electronics.com)  
[info@olympia-electronics.gr](mailto:info@olympia-electronics.gr)



## ZLD-XX/EM/ADR

ADDRESSABLE  
SELF TESTING MAINTAINED  
EMERGENCY ILLUMINATION SIGNS



Thank you for your trust in our products  
Olympia Electronics - European manufacturer

## Package Contents

- 1 Luminaire
- 1 Mounting accessories
- 1 Manual
- 2 Pictograms

## General

These devices are used indoors (ta 40°C) in places where emergency light is needed. Each device must be permanently connected to mains power supply. In normal operation the battery is charging. In case of a mains power supply failure, the device enters emergency mode and the illumination LED turns on. When the mains power supply is restored the device turns to normal operation.

### Manual Operational Test

By pressing the test button an operation test is initiated. The light source and the emergency circuit of the device are tested. The manual test can be conducted only if the mains power supply and the battery are connected. During this test period all indications LED are OFF.

### Tests

The illumination source and the autonomy tests are programmed by the control panel. The tests results are send to the control panel.

**If the luminaire is not connected to the panel, the following automatic tests executed:**

### Automatic Operational Test

This test includes all the operations that are provided in manual operational test and is conducted automatically every 15 days and lasts 3 seconds.

### Automatic Autonomy Test

The Automatic Autonomy Test is conducted every 6 months and measures the device's back up operation and emergency duration. In order to be performed, the mains power supply and the battery should be connected and fully charged. If the battery is not fully charged, the test is postponed until the battery is completely charged. If during this test, the autonomy is less than nominal then the battery fault led turned on continuously and the battery must be replaced.

## Indications LED Status

CHARGE (green)	LAMP FAULT (red)	BATT. FAULT (red)	Description	● Permanently ON	○ Off
●	●	●		● Blink	○ Indifferent
●	∅	∅	Charging		
∅	●	∅	Lamp Fault		
●	∅	●	Battery fault		
○	∅	●	No charging current or disconnected battery		

## Resetting Errors

Push the Test button for more than 5 seconds, to delete all the indicated LED errors. Then the device enters regular operation mode.

## Changing The Operating Mode

Press and hold the TEST button for more than 5 seconds. The luminaire will erase first the errors (3 LED indicators will light in succession) and after 2 seconds the LED Lamp Fault will remain lit steadily. When the TEST button is released, the luminaire will change between maintained or non-maintained mode. The change is recorded permanently in it's memory.

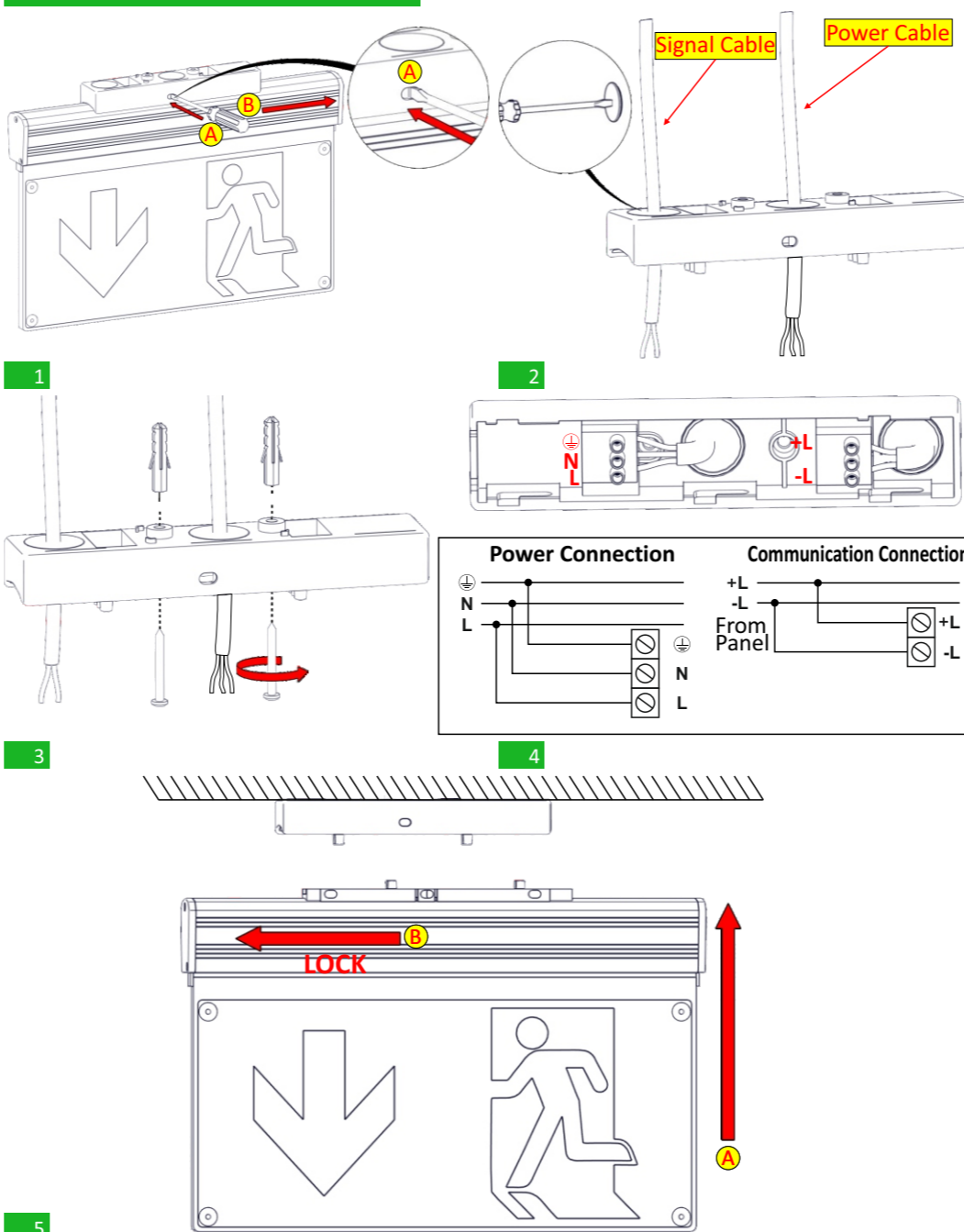
## Addressable Communication

The luminaires can be connected to the addressable panels of Olympia Electronics. For address operations refer to the installation manual of the panel. For address connections see page 2.

## ATTENTION!!!

- Operations for installation, maintenance or testing must be done by authorized personnel only.
- Always use in any case round mains cable, with a diameter of 5-10mm (H05RN-F type 2x1mm<sup>2</sup> or any other type, at least equal to it's mechanical and electrical properties). ATTENTION!! The cable must not be deformed in any way (This requirement is important to ensure the IP rating).
- The device must be connected to the mains power supply through a circuit breaker that is depends on the total line's power load.
- In case of battery replacement, it must be replaced by the same type, by the manufacturer or a competent person.
- In case of inactive use for a period greater than 2 months, disconnect the battery by pulling out the battery's connector.
- It is not allowed to discard batteries into common trash bins, they must be discarded only in battery recycling points. Do not incinerate.**

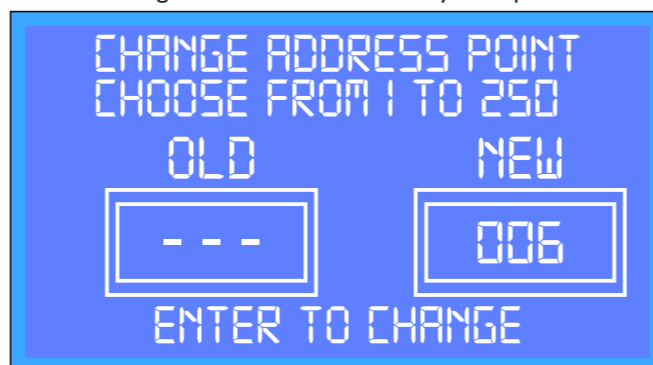
## Installation Instructions



## Programming the address of a luminaire

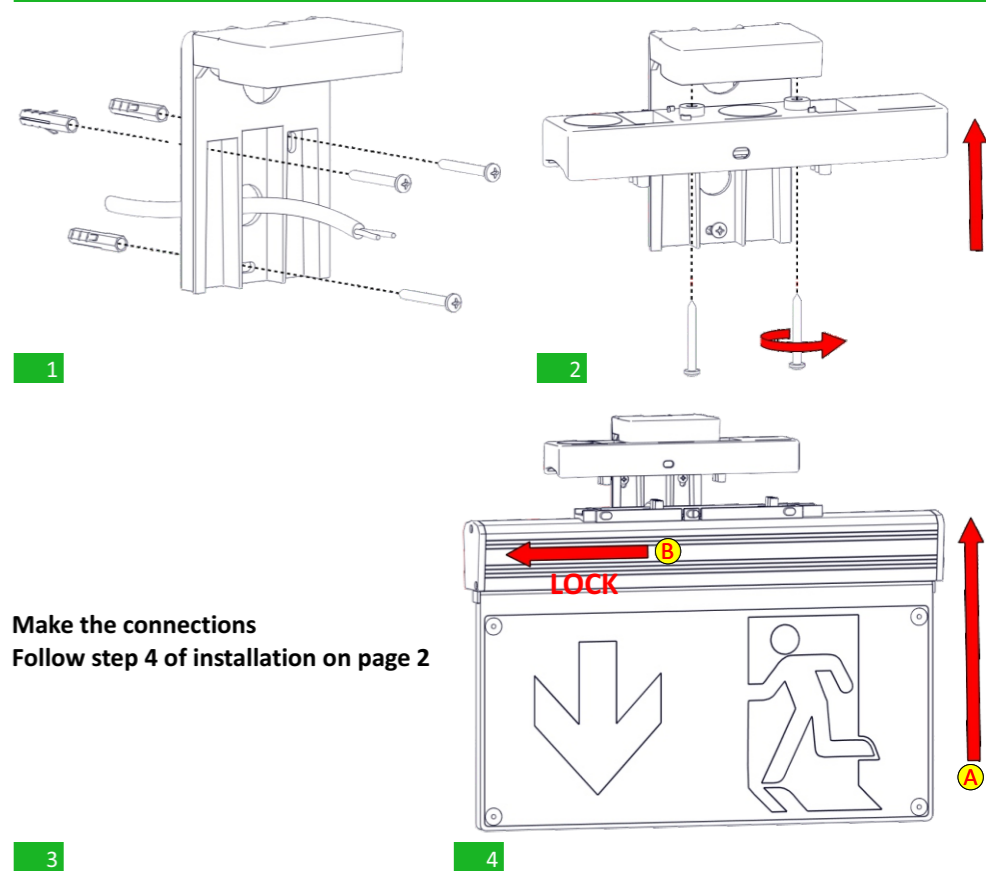
To program or change the address of a luminaire you must connect the luminaire to the panel alone and do the following steps:

- The luminaire must not be connected with the mains power supply not with the battery.
- One end of the cable is connented to the luminaire and the other end to the panel.
- You must go to the menu:  
TECHNICIAN MENU => SETTINGS=> CHANGE ADDRESS POINT
- Set the new address using the ↑ UP and ↓ DOWN keys and press enter when done.



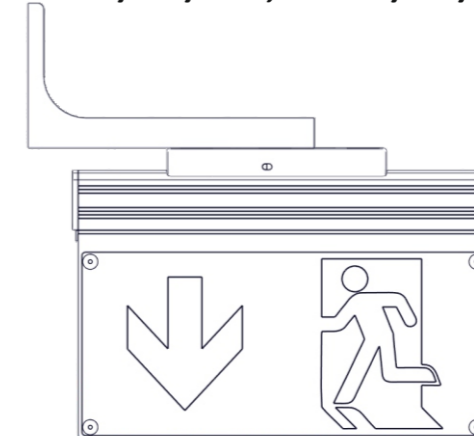
## Surface mounting on a Wall with A-1134 base (Included in the package)

### Single sided luminaire



## Optional Mounting Methods (Upon Request)

### Flag mounting A-1133 SET (only for ZLD-28/EM/ADR, ZLD-34/EM/ADR)



### Hanging mounting A-1130, A-1131, A-1132 SET

