

Package contents

- 1 Luminaire (Main unit + LED Spot)
- 1 Battery
- 1 Manual

General

Manual Operational Test (Optional with external test button connected)

The operational test is initiated by briefly pressing the TEST button. The light source and the emergency circuit of the device are tested. The manual operational test can be conducted only if the mains power supply and the battery are connected. During this test period, the GREEN LED starts blinking. The battery must have an adequate charge. This test lasts for 3 seconds.

Manual Autonomy Test (Optional with external test button connected)

The manual autonomy test is initiated by pressing and holding the TEST button for 5-10 seconds. In order to perform this test, the mains power supply should be connected, and the battery should be fully charged. The luminaire enters emergency mode, and the GREEN LED starts blinking. The test lasts for the stated autonomy duration of the luminaire. If, at the end of the test, the autonomy is lower than the nominal value, the BATTERY FAULT LED will light up, indicating that the battery needs to be replaced. If the result of the test is satisfactory, the luminaire enters charging mode, and the CHARGE LED continues to blink until the battery is fully charged.

Automatic Operational Test

This test includes all the operations provided in the Manual Operational Test and is conducted automatically every 15 days, lasting 3 seconds.

Automatic Autonomy Test

The Automatic Autonomy Test is conducted annually and measures the device's backup operation and emergency duration. This test includes all functions of the Manual Autonomy Test.

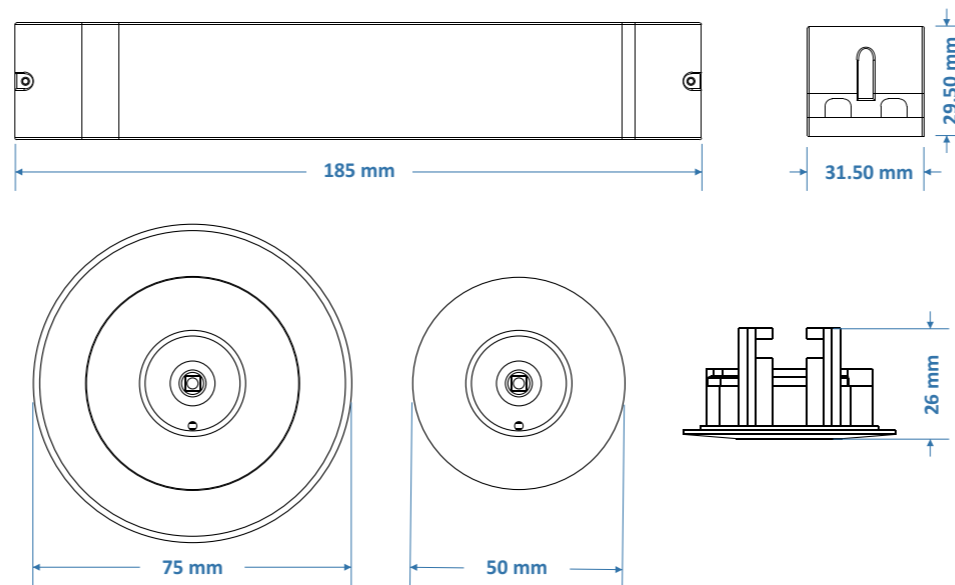
ATTENTION!!!

1. Operations for installation, maintenance, or testing must be done by authorized personnel only.
2. Always use round mains cables with a diameter of 5-10mm (H05RN-F type 2x1mm² or any other type at least equal to its mechanical and electrical properties). ATTENTION!! The cable must not be deformed in any way (This requirement is important to ensure the IP rating).
3. The device must be connected to the mains power supply through a circuit breaker that is appropriate for the total line's power load.
4. In case of battery replacement, it must be replaced with the same type, by the manufacturer or a competent person.
5. If the device is inactive for a period greater than 2 months, disconnect the battery by pulling out the battery's connector.
6. If the luminaire no longer meets the rated duration of operation after the corresponding recharge period, the battery must be replaced.
7. To prevent luminaires from performing their autonomy test on the same day, ensure there is at least a 1.5-minute gap between connecting the battery packs.
8. It is not allowed to discard batteries into common trash bins; they must be discarded only at battery recycling points. Do not incinerate.

Indications LED Status

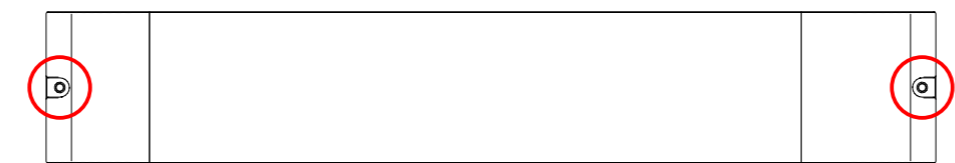
GREEN (Charge)	RED (Fault)	Description
●	○	Normal operation
●	○	Charging (The autonomy test cannot be performed)
○	○	There is no power supply (The battery is not connected, or there is a power supply fault)
●	○	Autonomy test (Duration: 1 hour or 3 hours depending on the luminaire's autonomy)
∅	●	Battery fault
●	○	Operational test (Duration: 3 seconds)
∅	●	Light source fault
∅	●	Battery fault & light source fault
Note:		● Permanently ON ● Blinking fast ● Blinking slow ○ Off ∅ Irrelevant

Dimensional drawing

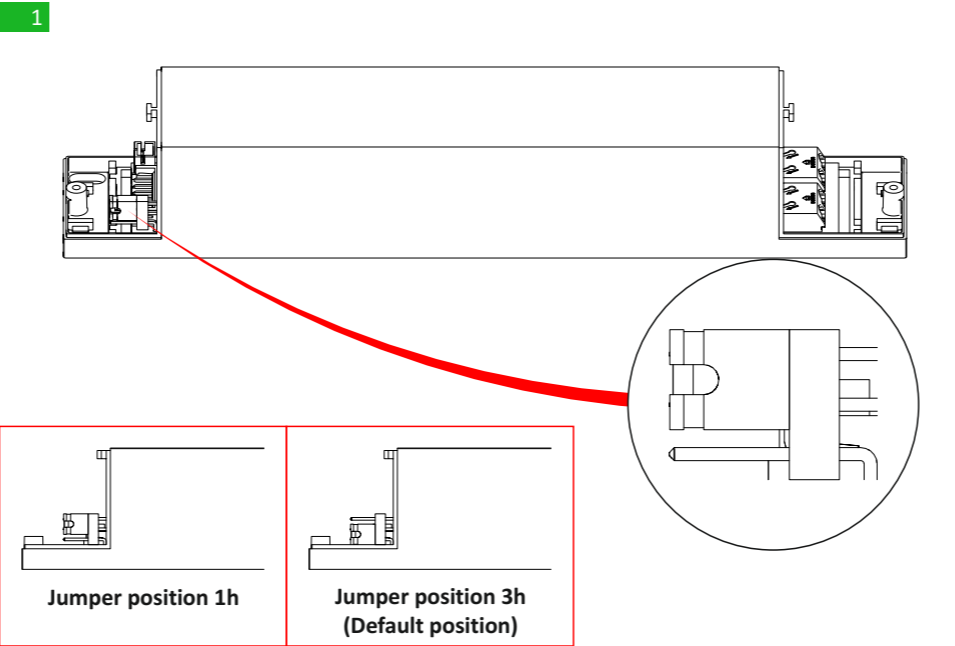


Required opening on the false ceiling: Ø 46mm
Required opening on the false ceiling with the bezel: Ø 56-70mm

Installation Instructions

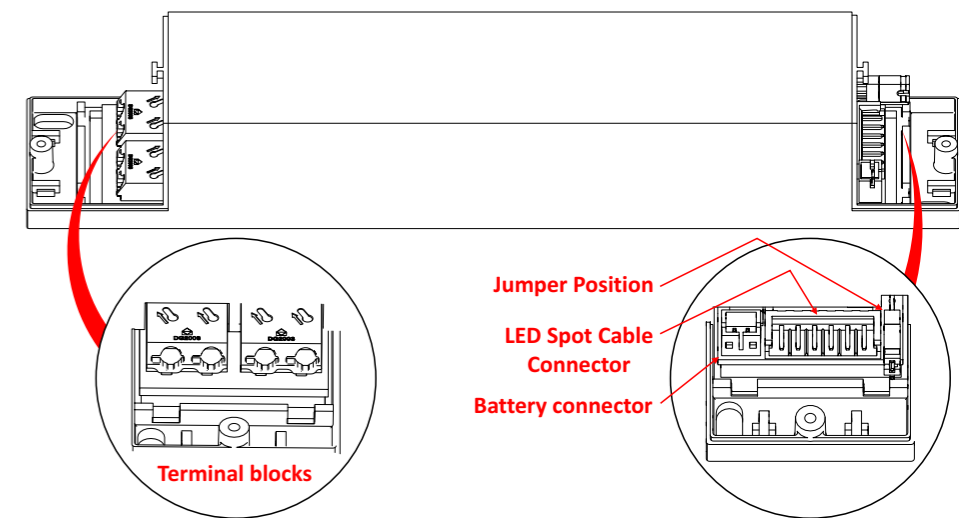


Loosen the retaining screws on the side covers to access the terminal block and the battery connector.

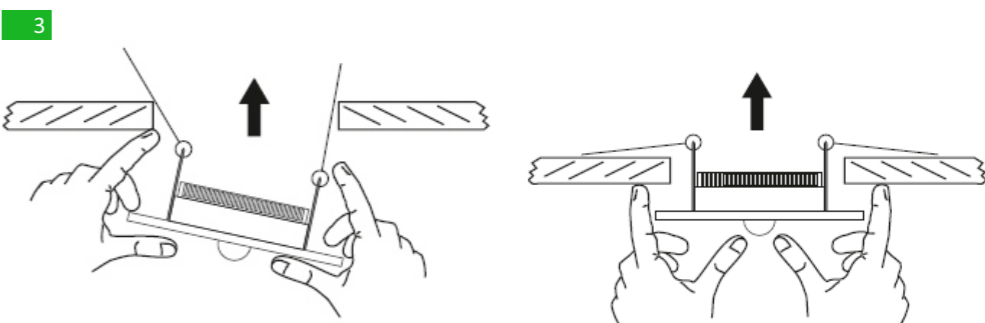
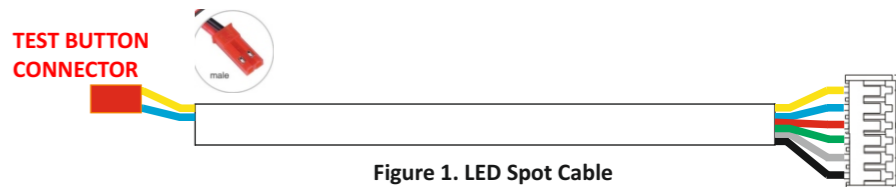


The user can adjust the emergency duration of the device by repositioning the jumper. The default setting is for 3 hours of autonomy. This selection must be made while the luminaire is disconnected from both AC power and battery supplies.

NOTE!! The installer should fill in, on the specification label, the selected duration. 60 for 1 hour duration or 180 for 3 hours duration.



Connect the power cable: N for the neutral and L for the live wire.
Connect the battery cable to the battery connector.
Secure the cables with the included tie-wraps.
(Optional) Connect the test button to the appropriate connect on the LED Spot Cable Figure 1)



Create the necessary opening in the false ceiling and install the main unit.
To install the spotlight, bend one spring to insert it into the hole in the suspended ceiling. Then, bend the other spring and push the luminaire upward until it is securely mounted. The device is now ready for operation.

NOTE!!
After finishing the installation you must power the luminaire for at least 24 hours in order to completely charge the battery. The rated autonomy duration can be achieved after that time.

Battery replacement

The battery replacement procedure must be carried out by qualified personnel and only after disconnecting the power supply.

1. Remove the spot and the main unit from the false ceiling.
2. Disconnect the battery connector and remove the old battery.
3. Connect the new battery of the same type and place it in the position of the old battery.
4. Reinstall the spot and the main unit to the false ceiling and power the device.


NOTE: LED= Light Emitting Diode

LABELING EXPLANATION:

- X: Self contained
- 0: Non maintained operation (*)
- A: Including test device
- 60: 1 hour duration
- 180: 3 hours duration

X 0 A 180

(*) **Non Maintained operation:** The luminaire lights its illumination source, only in power supply's failure.

 The light source of this luminaire is not user replaceable when the light source reaches its end of life the whole luminaire shall be replaced.



CAUTION! Do not look directly at the light source with your eyes.

Technical Characteristics

	KIT-77/84/LF/ST	KIT-77/84/LF/ST/C
OPERATION VOLTAGE	220-240V AC/DC, 50-60Hz	
MAXIMUM POWER CONSUMPTION	2.3W / 2.8VA	
SUPPLY CURRENT	12mA	
U-OUT	16V	
Prated	1.8W	
Irated	663mA	
MAX OPEN CIRCUIT VOLTAGE	16V	
WIRE CROSS SECTION	0.5 - 1.5mm ²	
BATTERY (LiFePO ₄)	6.4V / 2 Ah	
INSULATION BETWEEN SUPPLY & CONTROL TERMINALS	Basic Insulation	
INSULATION BETWEEN SUPPLY & BATTERY CIRCUIT	Basic Insulation	
BATTERY PROTECTION	Deep discharge and overcharge protection The control gear will recharge the battery normally after the test of 22.3	
MIN. MAX. DISCHARGE VOLTAGE	5.4 - 7V	
MIN. MAX. DISCHARGE CURRENT	360 - 500mA	
MIN. MAX. CHARGE CURRENT	100mA	
MAX. CHARGER VOLTAGE	7.6V	
INDICATIONS / CONTROL	CHARGE, FAULTS / TEST BUTTON (Optional)	
CHARGING TIME	23 hours	
MINIMUM DURATION	1h, 3h (Manually selected from jumber)	
LIGHT SOURCE	1 White power LED	
LIGHT SOURCE LUMINOUS FLUX (EMERGENCY)	330 lm	
DEGREES OF COVER PROTECTION	IP20	
PRODUCED IN ACCORDANCE WITH	EN 60598-1, EN 60598-2-22, EN 55015, EN 61547, EN 61000-3-2, EN 61000-3-3	
OPERATION TEMPERATURE RANGE	5 to 55 °C	
RELATIVE HUMIDITY	Up to 95%	
CONSTRUCTION MATERIAL	ABS/PC	
CONSTRUCTION COLOR	White	Anthracite
EXTERNAL DIMENSION MAIN UNIT (L x W x H)	185 x 31.5 x 29.5 mm	
EXTERNAL DIMENSION SPOT LIGHT (D x H)	Ø 75 x 26 mm (With Decorative bezel) Ø 50 x 26 mm (Without Decorative bezel)	
WEIGHT	190 gr (340 gr with the battery pack)	
GUARANTEE	3 years (10 years for the battery)	

LED Characteristics

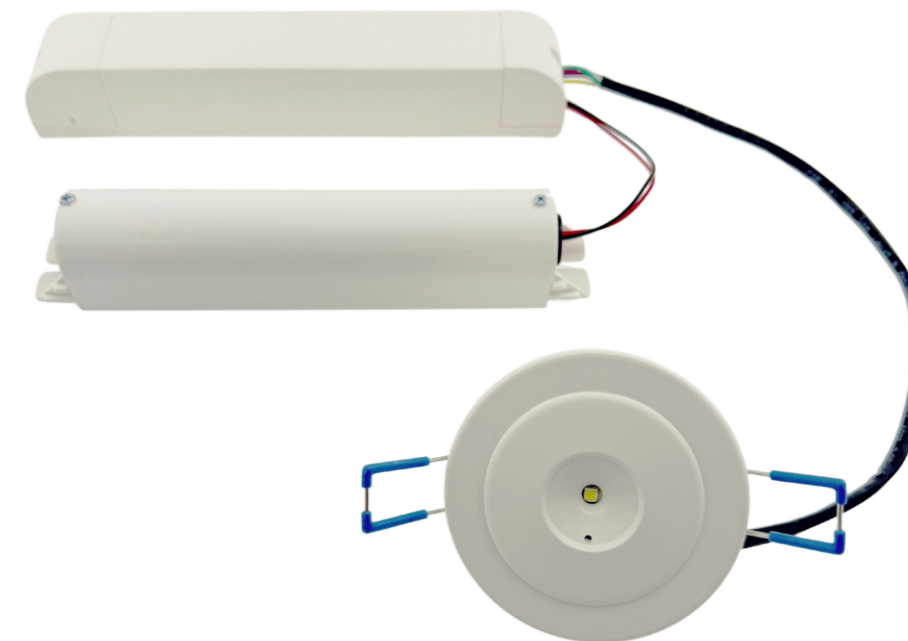
MANUFACTURER	Olympia Electronics S.A.
MODEL NUMBER	2707243
VOLTAGE RANGE	2.6- 3V DC
CONNECTIONS	Cable connection
TEMPERATURE	43 °C max. across the board

Warranty



72nd km. O.N.R. Thessaloniki-Katerini
P.C. 60300 P.O. Box 06 Eginio Pierias Greece

www.olympia-electronics.com
info@olympia-electronics.com



SELF-TESTING NON MAINTAINED EMERGENCY LUMINAIRE WITH SPOT LAMP

Thank you for your trust in our products
Olympia Electronics - European manufacturer