

Package Contents

- 1 Luminaire
- 1 Set of Pictograms
- 1 Mounting accessories
- 1 Manual

General

These devices are used indoors and outdoors (ta 55°C) in places where emergency light is needed. Each device must be permanently connected to mains power supply. In normal operation the super capacitor pack is charging. The light source can be either on or off, depending on user's choice. In case of a mains power supply failure, the device enters emergency mode and the illumination LED turns on. When the mains power supply is restored the device turns to normal operation.

Autonomy Duration Selection

The user can select one of the 3 available minimum autonomy durations 1 hour, 3 hours and 8 hours. The selection must be done while the luminaire is disconnected from AC and battery supplies. The selection is achieved through Switches 2 & 3 of DS1 as shown below.



1h (default position) 3h 8h

Technical Label Installation

Two additional labels are included in the package, one for 3 hours duration (180) and one for 8 hour duration (480). Depending on the selected duration, the installer must cover the default 1 hour (60) printing with one label that has the required duration. Please take notice of the orientation of the label.

Manual Operational Test

Remove the diffuser and then by pressing the test button briefly an operation test is initiated. The light source and the emergency circuit of the device are tested. The manual test can be conducted only if the mains power supply and the super capacitor pack are connected. During this test period the GREEN LED will blink fast. The super capacitor pack must have adequate charge. This test lasts for 3 seconds.

Manual Autonomy Test

A duration test can be conducted by pushing the button steadily for 5 to 10 seconds. In order to be performed, the mains power supply should be connected and the super capacitor pack should be fully charged. The luminaire enters emergency mode, the GREEN LED starts blinking fast. Its duration is the stated autonomy duration of the luminaire. If at the

end of the test the autonomy is lower than the nominal, the YELLOW LED will lit and battery needs to be replaced. If the result of the test is good then the luminaire enters charging mode and the GREEN LED starts blinking until the super capacitor pack is fully charged.

Automatic Operational Test

This test includes all the operations that are provided in Manual Operational Test and is conducted automatically every 15 days and lasts 3 seconds.

Automatic Autonomy Test

The Automatic Autonomy Test is conducted every 6 months and measures the device's back up operation and emergency duration. This test includes all functions of the Manual Autonomy Test.

Lens Removal

When the luminaire is used without the pictograms or the SP-1100 and you require more light output then remove the lens that covers the LEDs.

ATTENTION!!!

- Operations for installation, maintenance or testing must be done by authorized personnel only.
- Always use in any case round mains cable, with a diameter of 5-10mm (H05RN-F type 2x1mm² or any other type, at least equal to it's mechanical and electrical properties). ATTENTION!! The cable must not be deformed in any way (This requirement is important to ensure the IP rating).
- The device must be connected to the mains power supply through a circuit breaker that is depends on the total line's power load.
- In case of super capacitor pack replacement, it must be replaced by the same type, by the manufacturer or a competent person.
- In case of inactive use for a period greater than 2 months, disconnect the battery by pulling out the battery's connector.
- It is not allowed to discard super capacitor pack into common trash bins, they must be discarded only in recycling points. Do not incinerate.**

Indications LED Status

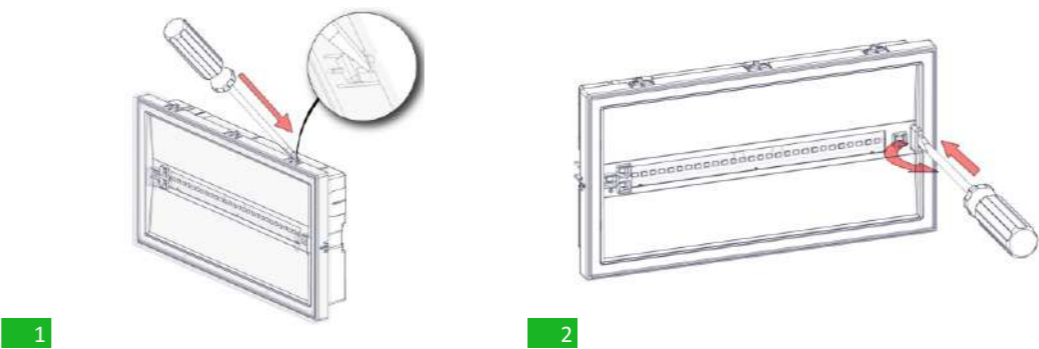
CHARGE (green)	SUPER CAPACITOR (SC) FAULT (yellow)	LAMP FAULT (red)	Description
			Normal
			Charging (battery test not possible while charging)
			Not Charging
			Battery/Light Source Test
			Battery Fault
			Battery not connected or charger fault
			Light Source Fault fault

Note:

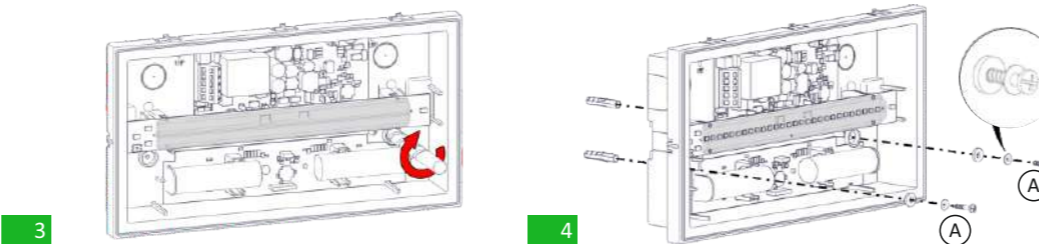
	Permanently ON
	Slow Blink
	Fast Blink
	Off
	Indifferent

923100412_09_001

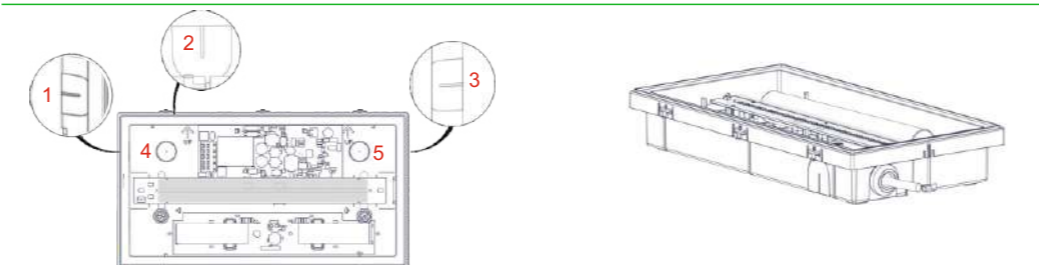
Installation Instructions



1

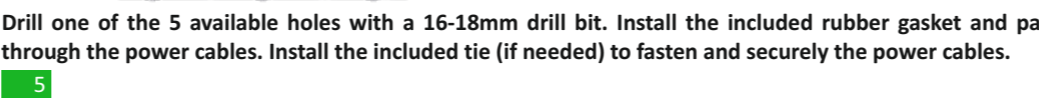


2



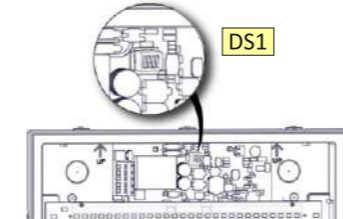
3

4



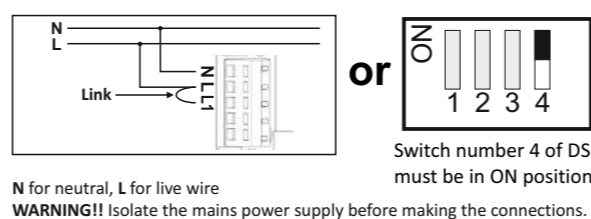
5

6) Autonomy Duration Selection (Read on General Informations, Page 1)



6

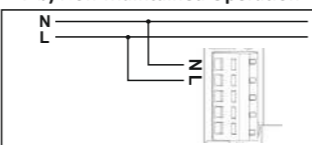
7 a) Permanent Maintained Operation



N for neutral, L for live wire
WARNING!! Isolate the mains power supply before making the connections.

7

7 b) Non-Maintained Operation

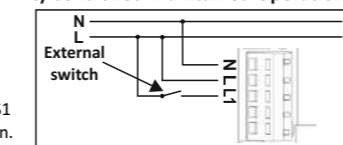


and Switch number 4 of DS1 must be in OFF position.

N for neutral, L for live wire **WARNING!!** Isolate the mains power supply before making the connections.

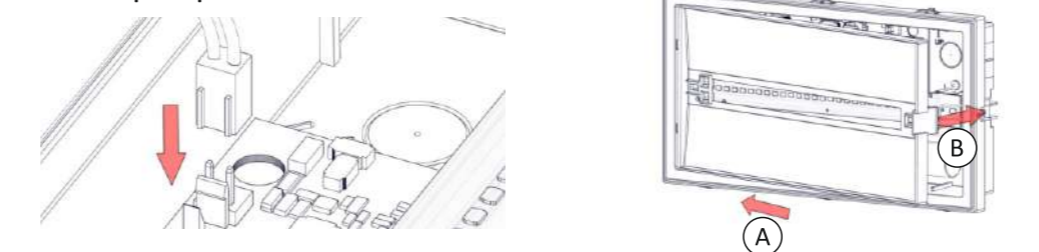
7

7 c) Controlled Maintained Operation of the lamp



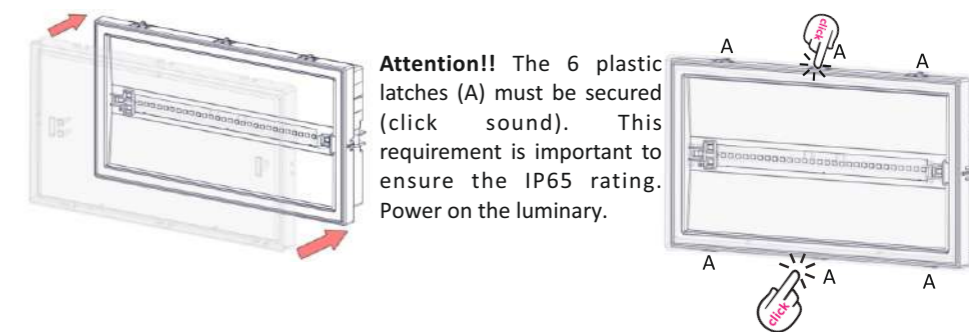
and Switch number 4 of DS1 must be in OFF position.

Super Capacitor Pack Connection



8

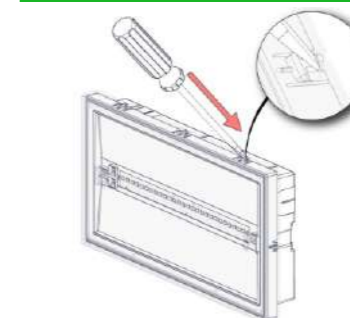
9



Attention!! The 6 plastic latches (A) must be secured (click sound). This requirement is important to ensure the IP65 rating. Power on the luminaire.

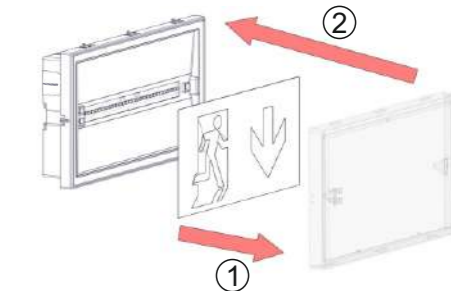
10

Pictogram Installation



1

11

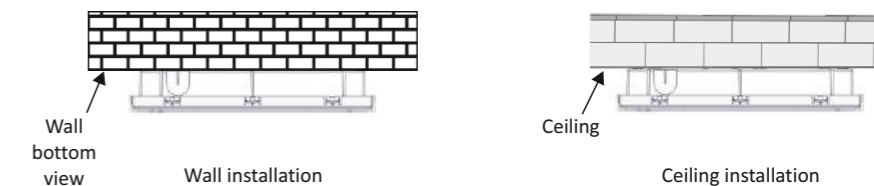


- Fit the pictogram you need to the diffuser, be careful to secure it on the 3 plastic holders.
- Refit the diffuser with the pictogram.

2

Mounting Methods

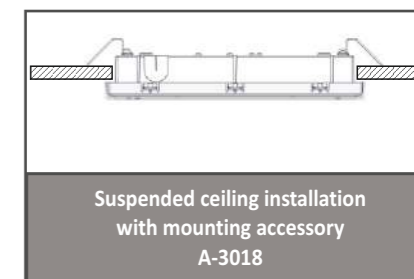
Oly luminaires can be surface mounted on walls or ceilings. For these mounted installations, special accessories are included.



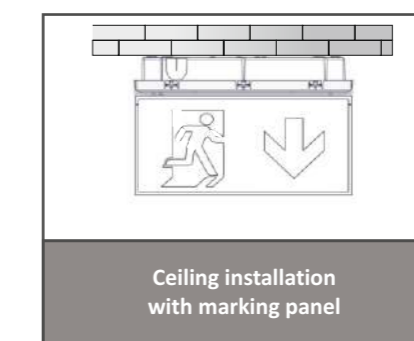
Extra Mounting Methods *

* **ATTENTION!!!** The below mounting methods can be done after request of the necessary mounting accessories!!

Suspended installation with A-3018 accessory
The luminaire can be installed in a suspended ceiling.

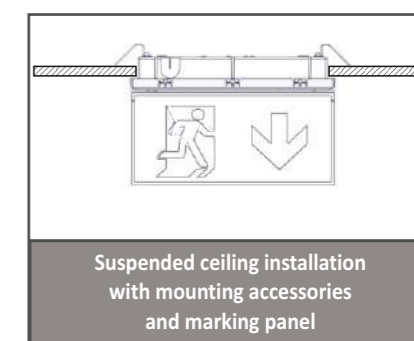


A marking panel (SP-1100) can be installed on the luminaire pointing the desired direction.



NOTE!!

After finishing the installation you must power the luminaire for at least 24 hours in order to completely charge the battery. The rated autonomy duration can be achieved after that time.

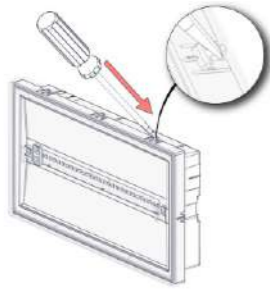


3

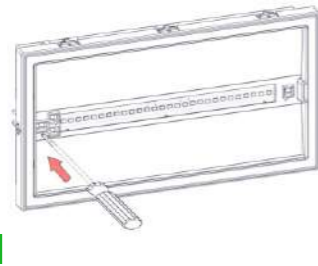
923100412_09_001

923100412_09_001

Manual Test

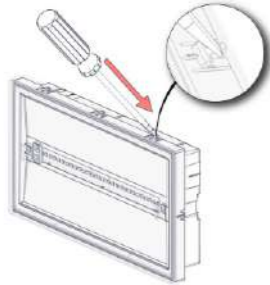


1

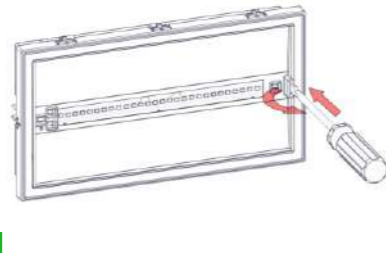


2

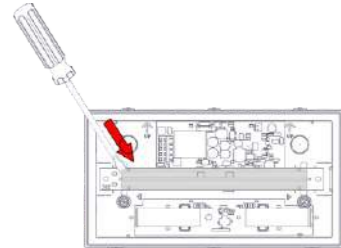
Lens Removal



1



2

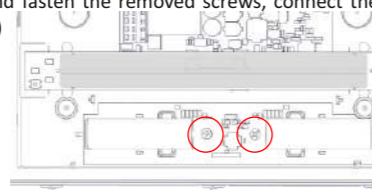


3

Super Capacitor Pack Replacement

It can be done only by a competent person and after the mains interruption.

1. Follow step 1 of the installation instructions and remove the diffuser.
2. Follow step 2 of the installation instructions and remove the reflector.
3. Disconnect the connector and remove the old capacitors pack by unfastening the retaining screws
4. Place the new capacitor pack in the position of the old one and fasten the removed screws, connect the super capacitor pack connector (Step 8 of Installation procedure)
5. Replace the removed parts (previous steps 1 and 2).



NOTE: LED= Light Emitting Diode

LABELING EXPLANATION:

X: Self contained

1: Maintained operation (*)

A: Including test device

F: Automatic test gear complying with IEC 61347-2-7 denoted EL-T

G: Internally illuminated safety sign

60: 1 hour duration

180: 3 hours duration

480: 8 hours duration

(*) **Maintained operation:** The luminaire lights its illumination source, when it is powered by the mains power supply or not.

Non Maintained operation: The luminaire lights its illumination source, only in mains power supply's failure.

NOTE!! The installer should fill in, on the specification label, the letter **G** if the luminaire is used as a safety sign.



ATTENTION!!!

The light source contained in this luminaire shall only be replaced by the manufacturer, or his agent, or a similar qualified person.

NOTE!! The light source is non-user replaceable.



CAUTION : Do not view directly with bare eyes.

4

923100412_09_001

Technical Characteristics

OLY-1004/SC/WP			
OPERATION VOLTAGE	220-240V AC / 50-60Hz		
MAXIMUM POWER CONSUMPTION	5.6W / 5.9VA		
SUPPLY CURRENT	26mA		
U-OUT	18V		
Prated	1h: 1.8W	3h: 1.1W	8h: 0.94W
Irated	1h: 175mA	3h: 104mA	8h: 90mA
MAX OPEN CIRCUIT VOLTAGE	0V		
WIRE CROSS SECTION	0.5mm ² - 2.5mm ²		
MINIMUM POWER FACTOR	0.94		
BATTERY (Super Capacitors)	2 x SC 2.7V 3000F		
INSULATION BETWEEN SUPPLY & CONTROL TERMINALS	Basic insulation		
BATTERY PROTECTION	Deep discharge and overcharge protection / the control gear will recharge the battery normally after the test of 22.3		
MIN MAX. DISCHARGE VOLTAGE	3.2-5.7V		
MIN MAX. DISCHARGE CURRENT	370mA - 530mA		
MIN MAX. CHARGE CURRENT	196mA - 200mA		
TRICKLE CHARGE VOLTAGE/CURRENT	5.7V / 0mA		
MAX CHARGE VOLTAGE	5.6V		
INDICATIONS	LED Charge, Lamp Fault LED, SC Fault LED		
CHARGE TIME	8 hours		
MINIMUM DURATION	1h, 3h, 8h		
LIGHT SOURCE	28 white LEDs		
LIGHT SOURCE LUMINOUS FLUX (MAINS / EMERGENCY)	1h: 340lm/340lm	3h: 340lm/150lm	8h: 340lm/50lm
DEGREES OF COVER PROTECTION	IP65		
PRODUCED IN ACCORDANCE WITH	EN 60598-1, EN 60598-2-22, EN 55015, EN 61547, EN 61000-3-2, EN 61000-3-3		
VIEWING DISTANCE (as safety sign)	25m		
CONTROL GEAR MAX. TEMPERATURE:tc	60 °C at D1		
OPERATION TEMPERATURE RANGE	-20 to 55 °C		
RELATIVE HUMIDITY	Up to 95%		
CONSTRUCTION MATERIAL	ABS/PC, PC		
EXTERNAL DIMENSION (L x W x H)	270 x 147 x 48 mm		
WEIGHT	650gr.		
GUARANTEE	10 years		
CONTROL GEAR WITH AUTOMATIC TEST FUNCTION	EL-T		

LED Characteristics

OLY-1004/SC/WP			
MANUFACTURER	Olympia Electronics S.A.		
MODEL NUMBER	2701205		
VOLTAGE RANGE	8.4V-12.4V DC		
NOMINAL POWER	1h: 1.8W	3h: 1.1W	8h: 0.94W
CONNECTIONS	Non reversible connection between main pcb and led module		
TEMPERATURE (tc)	42 °C max. across the board		

Warranty

Olympia Electronics guarantees the quality, condition and operation of the goods. The period of warranty is specified in the official catalogue of Olympia Electronics and also in the technical leaflet, which accompanies each product. This warranty ceases to exist if the buyer does not follow the technical instructions included in official documents given by Olympia Electronics or if the buyer modifies the goods provided or has any repairs or re-setting done by a third party, unless Olympia Electronics has fully agreed to them in writing. Products that have been damaged can be returned to the premises of our company for repair or replacement, as long as the warranty period is valid.

Olympia Electronics reserves the right to repair or to replace the returned goods and to or not charge the buyer depending on the reason of defection. Olympia Electronics reserves the right to charge or not the buyer the transportation cost.



72nd km. O.N.R. Thessaloniki-Katerini
P.C. 60300 P.O. Box 06 Eginio Pierias Greece

www.olympia-electronics.com

info@olympia-electronics.gr

5



OLY-1004/SC/WP
WATERPROOF SELFTESTING
MAINTAINED/NON MAINTAINED
EMERGENCY LUMINAIRE
WITH SUPER CAPACITOR



Thank you for your trust in our products
Olympia Electronics - European manufacturer

923100412_09_001