

**NON MAINTAINED/MAINTAINED EMERGENCY LUMINAIRES WITH WHITE LEDs**



**TECHNICAL CHARACTERISTICS** (for LED MODULE Specs. see page 3)

	GR-1310/15L	GR-1310/30L	GR-1312/15L	GR-1312/30L
OPERATION VOLTAGE	220-240V AC/50-60Hz			
MAXIMUM POWER CONSUMPTION	3.1W/3.3VA	3.3W/3.5VA	3.4W/3.6VA	4.5W/4.8VA
BATTERIES (Ni-Cd)	3.6V/0.6Ah	3.6V/1.5Ah		3.6V/3Ah
BATTERY PROTECTION	From overcharge and deep discharge			
INDICATIONS	Charge indication LED			
CHARGING TIME	24h			
MINIMUM AUTONOMOUS DURATION	90min		180min	
ILLUMINATION SOURCE	15 white LEDs	30 white LEDs	15 white LEDs	30 white LEDs
ILLUMINATION (230V AC / emergency)	30lm / 105lm	30lm / 210lm	30lm / 105lm	30lm / 210lm
DEGREES OF COVER PROTECTION	IP 40			
PRODUCED IN ACCORDANCE WITH	EN 60598-1, EN 60598-2-22, EN 55015, EN 61547, EN 61000-3-2, EN 61000-3-3			
OPERATION TEMPERATURE RANGE	5 to 40 °C			
RELATIVE HUMIDITY	Up to 95%			
CONSTRUCTION MATERIALS	ABS/PC, PC			
EXTERNAL DIMENSIONS	353 x 143 x 57 mm			
TYPICAL WEIGHT	700gr.	780gr.		880gr.
GUARANTEE	3 years (1 year for the battery)			

**Thank you for your trust in our products.  
Olympia Electronics - European manufacturer.**

**GENERAL**

These luminaires are used indoors (ta 40°C) where emergency light is needed.

Each luminaire must be permanently connected to the mains power supply. In normal operation the battery is charging, the green LED and 2 yellow LEDs light in non-maintained operation. The green LED and the LED strip light in maintained operation.

In case of a mains power supply failure the luminaire will light the LED strip automatically in emergency mode. When the mains power supply is restored the device turns to normal operation.

**Non maintained / maintained operation**

There is an option to select the non-maintained or maintained operation by placing the jumper to the appropriate place according to the step 5 (page 4).

**INSTALLATION**

To install the luminaire follow the installation instructions on page 4.

**ATTENTION!!!**

1. Operations for installation, maintenance or testing must be done by authorized personnel only.


2. The luminaire must be connected to the mains power supply through a fuse dependent on the total amount of the line's

power load.

3. It is suggested to check every month the indication LED for battery charging, and by pushing the TEST button to check the emergency circuit. The led strip should light as long as the TEST button is pressed. If the luminaire doesn't work as described above contact the installer.

4. It is suggested to check every 6 months the minimum autonomous duration by disconnecting the mains power supply. Count the time that the led strip lights and in case of less time than the minimum autonomous duration the battery must be replaced. If the measured time is considerably less than the minimum autonomous duration contact the installer. In case of battery or led strip replacement, these must be replaced by parts of the same type, by the manufacturer or by a competent person.

5. In case of inactive use for a period greater than 2 months, disconnect the battery by pulling out the battery's connector.

 **6. It is not allowed to discard batteries in to common trash bins, they must be discarded only in battery recycling points. Do not incinerate.**

### MARKING PANEL SP-116

A marking panel SP-116 can be installed on the luminaire in 3 different locations. This marking panel is installed perpendicular to the diffuser of the luminaire, as shown in the pictures below. The panel is pre-printed and has a plastic accessory on each side that is used to fasten the panel to the luminaire. The following panels are available on request.

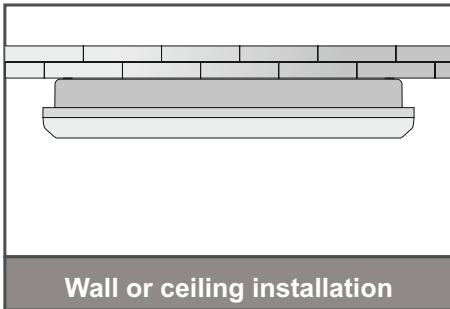


### Placing the SP-116 marking panel

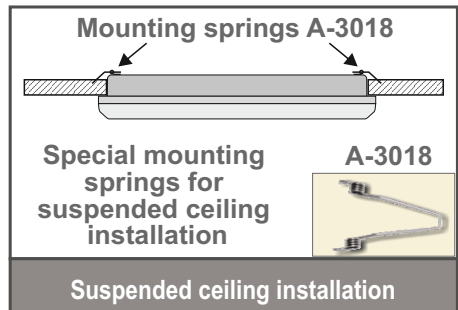
Place the plastic mounting accessories of the marking panel on each side as shown in the pictures.



## INSTALLATION METHODS



Wall or ceiling installation

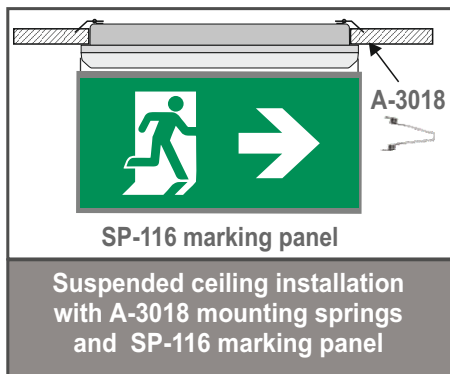


Mounting springs A-3018

Special mounting  
springs for  
suspended ceiling  
installation

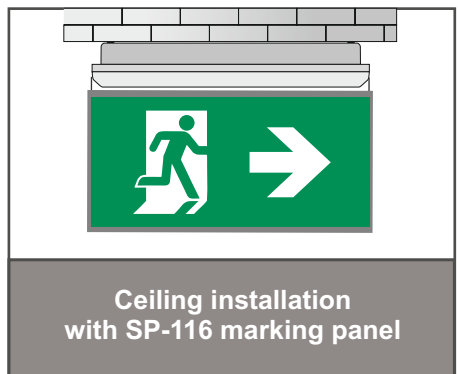
A-3018

Suspended ceiling installation



SP-116 marking panel

Suspended ceiling installation  
with A-3018 mounting springs  
and SP-116 marking panel



Ceiling installation  
with SP-116 marking panel



The light source contained in this luminaire shall only be replaced by the manufacturer, or his agent, or a similar qualified person.

NOTE! The light source is non-user replaceable.

**Mounting methods**

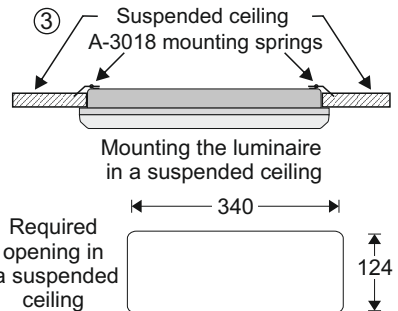
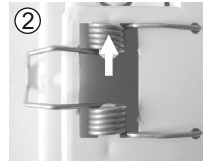
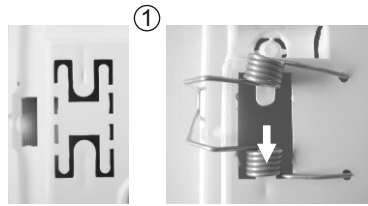
The luminaire can be surface mounted on walls or ceilings or in suspended ceilings. For suspended ceilings installations, the A-3018 special accessories are required which can be found in the catalog and must be ordered separately.

**Suspended ceiling installation.**

On the bottom of the base plastic of the luminaire there are two H shaped cut outs. These are used to install the A-3018 mounting springs. *Note! The luminaire is not suitable for mounting on tubular materials or surfaces.*

1. With a sharp tool remove the appropriate plastic pieces to fit the mounting springs. First place the edges of the mounting spring to the respective holes and install the one end of the coil to the support axis.
2. Install the other end of the coil to the other support axis.
3. Bend the springs and place the luminaire to the respective suspended ceiling's hole.

*The luminaire's placement to the suspended ceiling must be done after the connection with power supply cables.*



**Battery replacement.**

**It can be done only by a competent person and after the mains interruption.**

1. Follow the step 2 and 3 of the installation procedure.
2. Disconnect the connector and remove the old battery.
3. Connect the new battery with the same type (step 5 of the installation procedure) and place it in the position of the old one.
4. Follow the step 7 of the installation procedure and power the device.

**NOTE:** LED= Light Emitting Diode

**LABELING EXPLANATION:**

**X:** Self contained

**1:** Maintained (\*)

**A:** Including test device

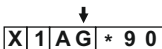
**G:** Internally illuminated

**\*90:** 1.5 hour duration

**180:** 3 hours duration

(\*) **Maintained operation:** The luminaire lights its illumination source, when it is powered by the mains power supply or not.  
**Non Maintained operation:** The luminaire lights its illumination source, only in power supply's failure.

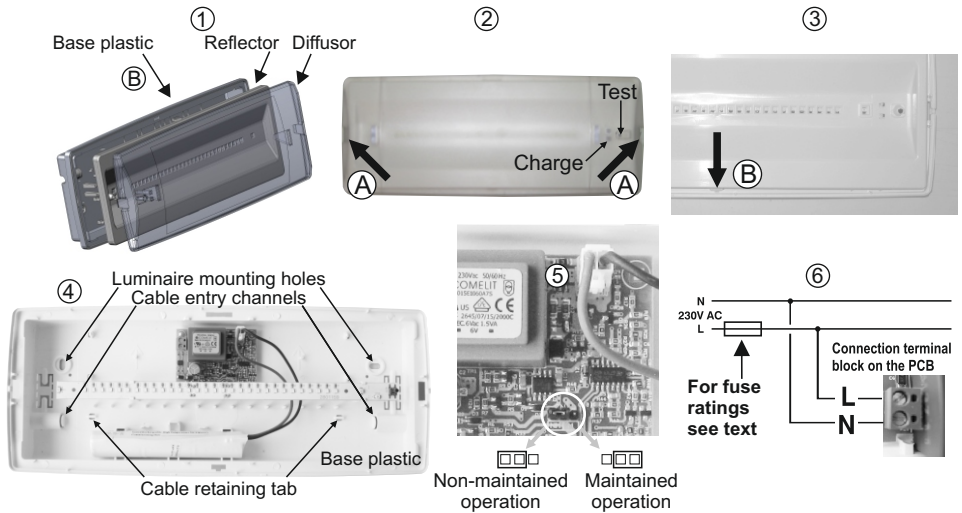
Note!! The installer should fill in, on the specification label, the letter **G** if the luminaire is used as a safety sign.



**LED MODULE CHARACTERISTICS**

	GR-1310/15L	GR-1312/15L	GR-1310/30L	GR-1312/30L
Manufacturer	Olympia Electronics S.A.			
Model Number	2801159/15L		2801159/30L	
Voltage Range	2.9-3.6VDC			
Nominal Power	980mW		1960mW	
Connections	Non reversible connection between main pcb and led module			
Temperature (tc)	47 °C max. across the board			

## INSTALLATION INSTRUCTIONS



1. To install the luminaire you must dismantle it to 3 parts.
2. Place a flat blade screwdriver in the area **A** to release the diffuser's plastic hook.
3. Place a flat blade screwdriver in the area **B** to release the reflector's plastic hook.
4. Use the included mounting parts to mount the base plastic. Pass the mains cable through a cable entry channel and fasten it to the respective cable retaining tab, with the included tie.
5. Place the battery's connector to the corresponding connector on the P.C.B. Select the required operation with the respective jumper.
6. Connect the mains cables to the respective terminal block. **N for neutral, L for live wire.**
7. Refit the removed parts in steps 2 and 3 (mind the correct orientation) and the luminaire is ready to operate.

**NOTE!! After finishing the installation you must power the luminaire at least for 24 hours for battery charging to perform the nominal autonomy.**

### WARRANTY

Olympia Electronics guarantees the quality, condition and operation of the goods. The period of warranty is specified in the official catalogue of Olympia Electronics and also in the technical leaflet, which accompanies each product. This warranty ceases to exist if the buyer does not follow the technical instructions included in official documents given by Olympia Electronics or if the buyer modifies the goods provided or has any repairs or re-setting done by a third party, unless Olympia Electronics has fully agreed to them in writing. Products that have been damaged can be returned to the premises of our company for repair or replacement, as long as the warranty period is valid. Olympia Electronics reserves the right to repair or to replace the returned goods and to or not charge the buyer depending on the reason of deflection. Olympia Electronics reserves the right to charge or not the buyer the transportation cost.

### HEAD OFFICE

72nd km. O.N.R. Thessaloniki-Katerini  
P.C. 60300 P.O. Box 06 Eginio Pierias Greece

[www.olympia-electronics.gr](http://www.olympia-electronics.gr)

[info@olympia-electronics.gr](mailto:info@olympia-electronics.gr)