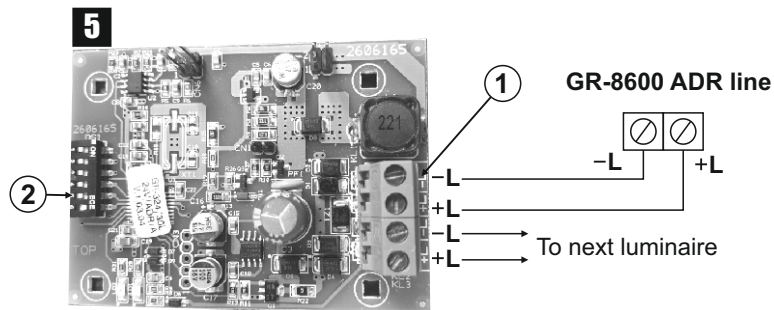


Address connections

1. To connect the address cables, perform the connections according to the photo below.
2. Address the luminaire by using the dip-switches.



Please see manual of CBS panel GR-8600 for maximum number of luminaires that can be interconnected.

Address	Dipswitch setting	Address	Dipswitch setting	Address	Dipswitch setting	Address	Dipswitch setting
1	ON OFF OFF OFF OFF OFF	11	ON OFF OFF OFF OFF OFF	21	ON OFF OFF OFF OFF OFF	31	ON OFF OFF OFF OFF OFF
2	ON OFF OFF OFF OFF OFF	12	ON OFF OFF OFF OFF OFF	22	ON OFF OFF OFF OFF OFF	32	ON OFF OFF OFF OFF OFF
3	ON OFF OFF OFF OFF OFF	13	ON OFF OFF OFF OFF OFF	23	ON OFF OFF OFF OFF OFF		
4	ON OFF OFF OFF OFF OFF	14	ON OFF OFF OFF OFF OFF	24	ON OFF OFF OFF OFF OFF		
5	ON OFF OFF OFF OFF OFF	15	ON OFF OFF OFF OFF OFF	25	ON OFF OFF OFF OFF OFF		
6	ON OFF OFF OFF OFF OFF	16	ON OFF OFF OFF OFF OFF	26	ON OFF OFF OFF OFF OFF		
7	ON OFF OFF OFF OFF OFF	17	ON OFF OFF OFF OFF OFF	27	ON OFF OFF OFF OFF OFF		
8	ON OFF OFF OFF OFF OFF	18	ON OFF OFF OFF OFF OFF	28	ON OFF OFF OFF OFF OFF		
9	ON OFF OFF OFF OFF OFF	19	ON OFF OFF OFF OFF OFF	29	ON OFF OFF OFF OFF OFF		
10	ON OFF OFF OFF OFF OFF	20	ON OFF OFF OFF OFF OFF	30	ON OFF OFF OFF OFF OFF		

WARRANTY

Olympia Electronics guarantees the quality, condition and operation of the goods. The period of warranty is specified in the official catalogue of Olympia Electronics and also in the technical leaflet, which accompanies each product. This warranty ceases to exist if the buyer does not follow the technical instructions included in official documents given by Olympia Electronics or if the buyer modifies the goods provided or has any repairs or re-setting done by a third party, unless Olympia Electronics has fully agreed to them in writing. Products that have been damaged can be returned to the premises of our company for repair or replacement, as long as the warranty period is valid. Olympia Electronics reserves the right to repair or to replace the returned goods and to or not charge the buyer depending on the reason of deflection. Olympia Electronics reserves the right to charge or not the buyer the transportation cost.

HEAD OFFICE

72nd km. O.N.R. Thessaloniki-Katerini
P.C. 60300 P.O. Box 06 Eginio Pierias Greece
www.olympia-electronics.gr
info@olympia-electronics.gr



ADDRESSABLE EMERGENCY LUMINAIRES FOR GR-8600 CBS PANEL



TECHNICAL CHARACTERISTICS (for LED MODULE specifications see page 2)

	GR-1325/15L/24V/ADR	GR-1325/30L/24V/ADR
OPERATION VOLTAGE	15-30V DC	
MAXIMUM POWER CONSUMPTION	1.5W	2.3W
ILLUMINATION SOURCE	15 white LEDs	30 white LEDs
ILLUMINATION	125lm	255lm
VIEWING DISTANCE	26m	
DEGREES OF COVER PROTECTION	IP40	
PRODUCED IN ACCORDANCE WITH	EN 60598-1, EN 60598-2-22, EN 55015, EN 61547	
OPERATION TEMPERATURE RANGE	-20 to 50 °C	
RELATIVE HUMIDITY	up to 95%	
CONSTRUCTION MATERIALS	Bayblend FR3010, transparent polycarbonate	
EXTERNAL DIMENSIONS	353 x 143 x 57 mm	
TYPICAL WEIGHT	555gr.	
GUARANTEE	3 years	

Thank you for your trust in our products
Olympia Electronics - European manufacturer

GENERAL

- Operations for installation, maintenance or testing must be done by authorized personnel only.
- The device, must be connected **only** to the GR-8600 panel via its ADR line.
- First set the address before installation. To address the device see page 4.

ADDRESS OPERATION

For address operations refer to the installation manual of the panel.

NOTE: LED= Light Emitting Diode

LABELING EXPLANATION:

- Z:** Central supply
- 1:** Maintained
- B:** Including remote rest mode
- C:** Including inhibiting mode
- G:** Internally illuminated safety sign

Note!! The installer should fill in, on the specification label, the letter **G** if the luminaire is used as a safety sign.

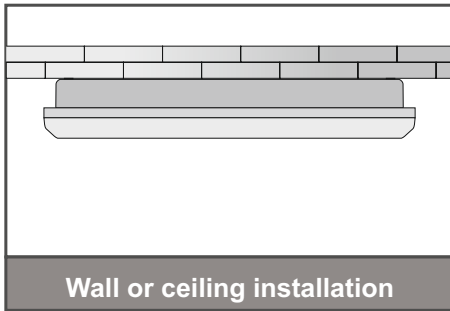
Z 1 B C G



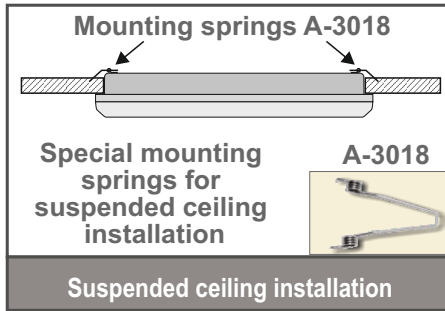
The light source contained in this luminaire shall only be replaced by the manufacturer, or his agent, or a similar qualified person.

NOTE! The light source is non-user replaceable.

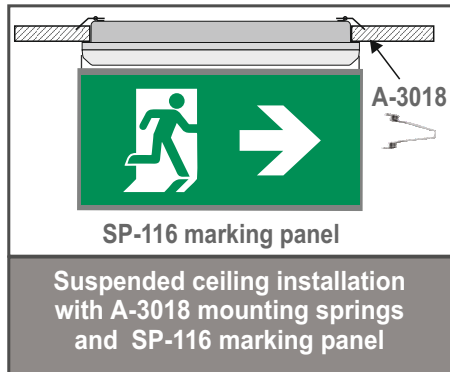
INSTALLATION METHODS



Wall or ceiling installation



Suspended ceiling installation



Suspended ceiling installation with A-3018 mounting springs and SP-116 marking panel



Ceiling installation with SP-116 marking panel

MARKING PANEL SP-116

A marking panel SP-116 can be installed on the luminaire in 3 different locations. This marking panel is installed perpendicular to the diffuser of the luminaire, as shown in the pictures below. The panel is pre-printed and has a plastic accessory on each side that is used to fasten the panel to the luminaire. The following panels are available after request.



Placing the SP-116 marking panel

Place the plastic mounting accessories of the marking panel on each side as shown in the pictures.



LED Module Specifications		
	GR-1325/15L/24V/ADR	GR-1325/30L/24V/ADR
Manufacturer	Olympia Electronics S.A.	
Model Number	0404153/15L	0404153/30L
Voltage Range	8.7-10.8V DC	
Nominal Power	1W	2W
Connections	Non reversible connection between main pcb and led module	
Temperature (tc)	47 °C max. across the board	

Mounting methods

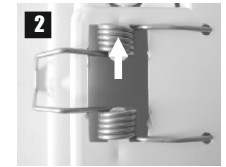
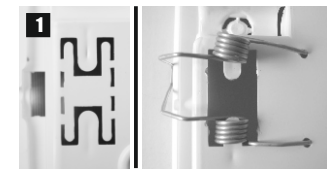
The luminaire can be surface mounted on walls, ceilings or in suspended ceilings. For suspended ceilings installations, the A-3018 special accessories are required which can be found in the catalog and must be ordered separately.

Suspended ceiling installation

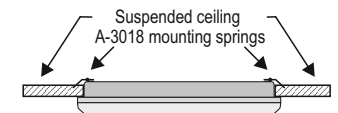
On the bottom of the base plastic of the luminaire there are two H shaped cut outs. These are used to install the A-3018 mounting springs. *Note! The luminaire is not suitable for mounting on tubular materials or surfaces.*

1. With a sharp tool remove the appropriate plastic pieces to fit the mounting springs. First place the edges of the mounting spring to the respective holes and install the one end of the coil to the support axis.
2. Install the other end of the coil to the other support axis.
3. Bend the springs and place the luminaire to the respective suspended ceiling's hole.

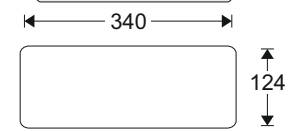
The luminaire's placement to the suspended ceiling must be done after the connection with power supply cables.



3 Mounting the luminaire in a suspended ceiling



Required opening in a suspended ceiling



Installation instructions

1. To install the luminaire you must dismantle it into 3 parts.
2. Place a flat blade screwdriver in the area **A** to release the diffuser's plastic hook.
3. Place a flat blade screwdriver in the area **B** to release the reflector's plastic hook.
4. Use the included mounting parts to mount the base plastic. Pass the power supply cables through a cable entry channel and fasten it to the respective cable retaining tab, with the included tie.
5. Connect the power supply cables to the terminal blocks (according to the photo on page 4).
6. Refit the removed parts in steps 2 and 3 (mind the correct orientation) and the luminaire is ready to operate.

