

## WATERPROOF CBS LUMINAIRES WITH LEDs



### TECHNICAL CHARACTERISTICS

	GR-1926/15L	GR-1926/30L
OPERATION VOLTAGE	85-250VDC/100-250VAC/50-60Hz	
MAXIMUM POWER CONSUMPTION	1.5W/1.9 VA	2.8W/3.1VA
ILLUMINATION SOURCE	15 White LED	30 White LED
ILLUMINATION	125lm	250lm
DEGREES OF COVER PROTECTION	IP65	
PRODUCED IN ACCORDANCE WITH	EN 60598-1, EN 60598-2-22, EN 55015, EN 61547, EN 61000-3-2, EN 61000-3-3	
OPERATION TEMPERATURE RANGE	-20 to 55 °C	
RELATIVE HUMIDITY	Up to 95%	
CONSTRUCTION MATERIALS	Bayblend FR3010, transparent polycarbonate	
EXTERNAL DIMENSIONS	313 x 118 x 66 mm	
TYPICAL WEIGHT	520gr.	
GUARANTEE	3 years	

**Thank you for your trust in our products  
Olympia Electronics - European manufacturer**

#### GENERAL

These luminaires are used in places where emergency luminaires are needed.

Each luminaire must be permanently connected to Central Battery System.

or testing must be done by authorized personnel only.

#### INSTALLATION

To install the luminaire follow the installation instructions below.

#### ATTENTION!!!

1. Operations for installation, maintenance

### LED MODULE CHARACTERISTICS

	GR-1926/15L	GR-1926/30L
Manufacturer	Olympia Electronics S.A.	
Model Number	2402159/15L	2402159/30L
Voltage Range	8.5-10.5 V DC	
Nominal Power	980mW	2W
Connections	Non reversible connection between main pcb and led module	
Temperature (tc)	47 °C max. across the board	



The light source contained in this luminaire shall only be replaced by the manufacturer, or his agent, or a similar qualified person.

NOTE! The light source is non-user replaceable.

**NOTE:** LED= Light Emitting Diode

#### LABELING EXPLANATION:

**Z:** Central Supply **1:** Maintained

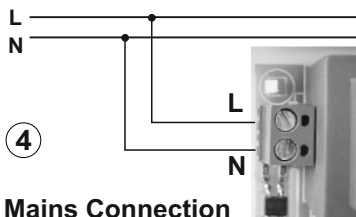
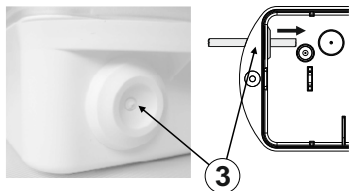
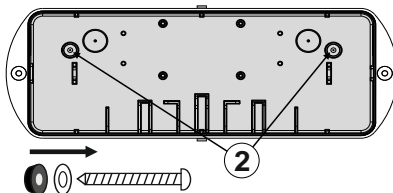
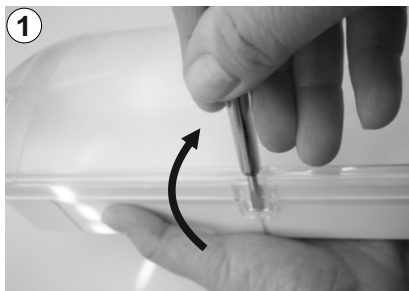
**G:** Internally illuminated safety sign

Note!! The installer should fill in, on the specification label, the letter **G** if the luminaire is used as a safety sign.

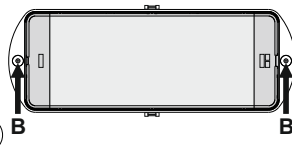
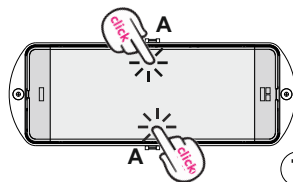
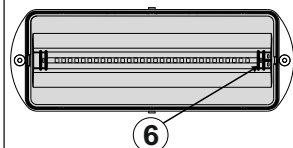
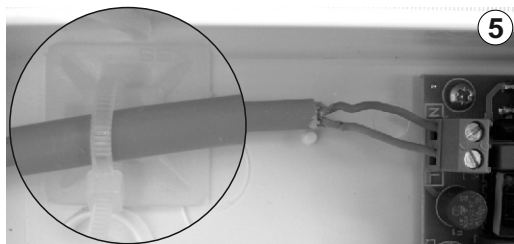
**Z1G** ←

## INSTALLATION INSTRUCTIONS FOR WALL OR CEILING MOUNTING

- ① Unfasten the 2 screws (not all the way, *step 7 B*), after that unclip the plastic latches with a flat blade screwdriver (Figure 1), and remove the diffuser. Place the flat blade screwdriver in the notches located on the sides of the reflector. Pry it gently until it separates from the base.
- ② Install the base plastic (with the included mounting screws and plugs). **WARNING!! To preserve the IP65 rating, fit the screws with the metallic washers and plastic rings which are included.**
- ③ **Always use in any case fire retarded and round mains cable, with a diameter of 5 to 10mm. (L2HiO(3sXt)H0.7F5E180 Ph120 3x0.75mm<sup>2</sup> type or any other type, at least equal to it's mechanical and electrical properties). ATTENTION!! The cable must not be deformed in any way (this requirement is important to ensure the IP65 rating).** Install the gasket and make a hole in the center by using a small screwdriver. Pass the round cable through the gasket. Install the second included gasket in to the unused hole.
- ④ Connect the mains cables to the respective terminal block N for neutral, L for live wire.
- ⑤ Install the included tie to fasten securely the power cables.
- ⑥ Refit the reflector.
- ⑦ Finally place the diffuser (mind the holes of the indications). **Attention!! First the plastic latches (A) must be secured (click sound) and then fasten the 2 screws (B) (tightening torque 1.2 Nm).**



Mains Connection



**WARRANTY**

Olympia Electronics guarantees the quality, condition and operation of the goods. The period of warranty is specified in the official catalogue of Olympia Electronics and also in the technical leaflet, which accompanies each product. This warranty ceases to exist if the buyer does not follow the technical instructions included in official documents given by Olympia Electronics or if the buyer modifies the goods provided or has any repairs or re-setting done by a third party, unless Olympia Electronics has fully agreed to them in writing. Products that have been damaged can be returned to the premises of our company for repair or replacement, as long as the warranty period is valid. Olympia Electronics reserves the right to repair or to replace the returned goods and to or not charge the buyer depending on the reason of defection. Olympia Electronics reserves the right to charge or not the buyer the transportation cost.

**HEAD OFFICE**

72nd km. O.N.R. Thessaloniki-Katerini  
P.C. 60300 P.O. Box 06 Eginio Pierias Greece

[www.olympia-electronics.gr](http://www.olympia-electronics.gr)

[info@olympia-electronics.gr](mailto:info@olympia-electronics.gr)