

Package Contents

- 1 Luminaire
- 3 Pictograms (R/L/D)
- 1 Mounting accessories
- 1 Manual

General

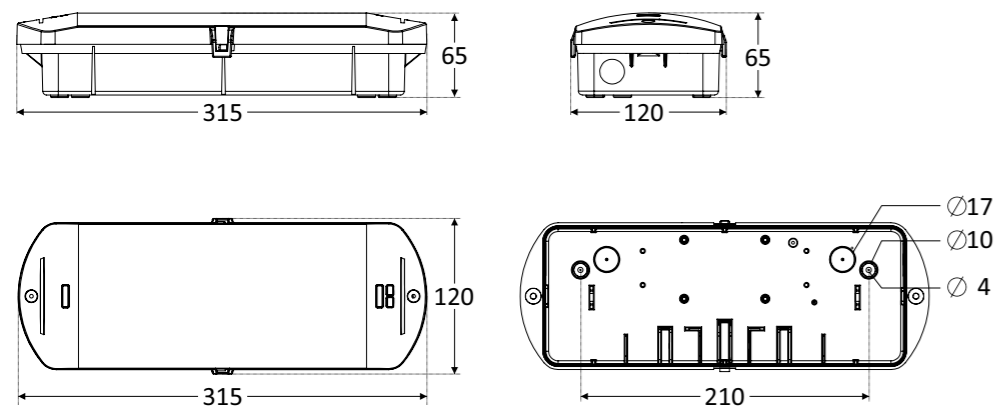
These devices are used in places (ta 50°C) where emergency light is needed (CBS). Each device must be permanently connected to mains power supply.

ATTENTION!!!

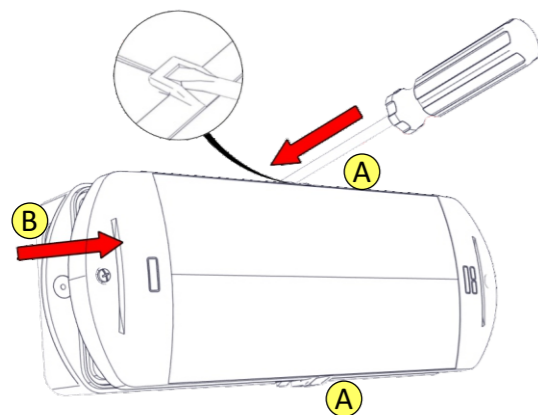
1. Operations for installation, maintenance or testing must be done by authorized personnel only.
2. Always use in any case round mains cable, with a diameter of 5-10mm (H05RN-F type 2x1mm² or any other type, at least equal to it's mechanical and electrical properties). ATTENTION!! The cable must not be deformed in any way (This requirement is important to ensure the IP rating).

Dimensional drawing:

315 x 120 x 65 mm



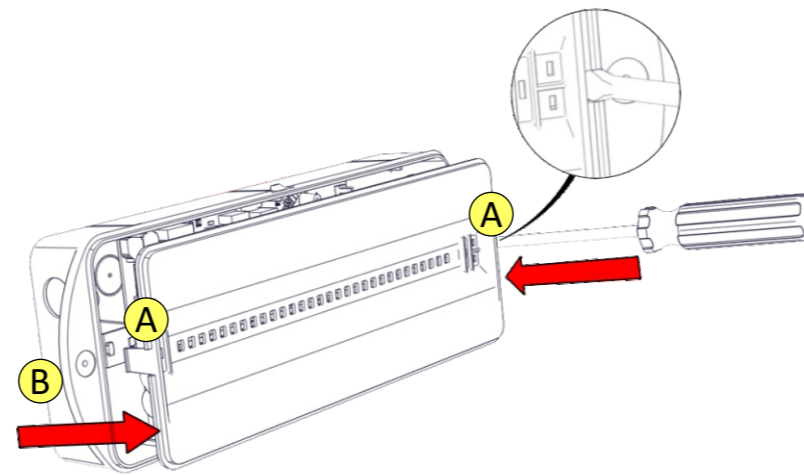
Installation



To dismantle the luminaire, simply remove the diffuser.

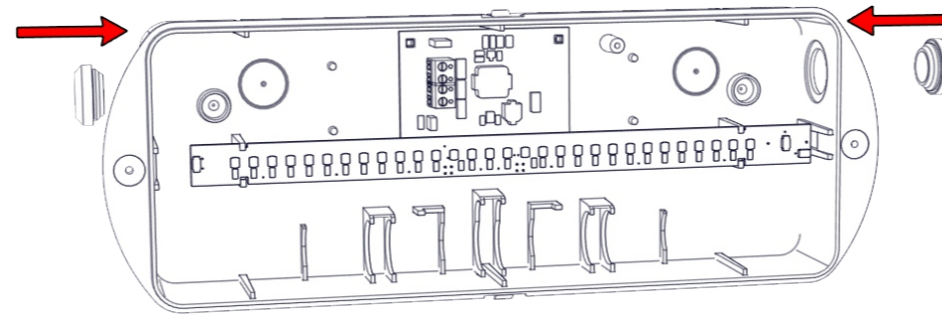
ATTENTION! If the 2 plastic latches (A) are clipped, carefully insert a flat-blade screwdriver to unclip them. Then, gently lift the diffuser (B) upwards to detach it.

1



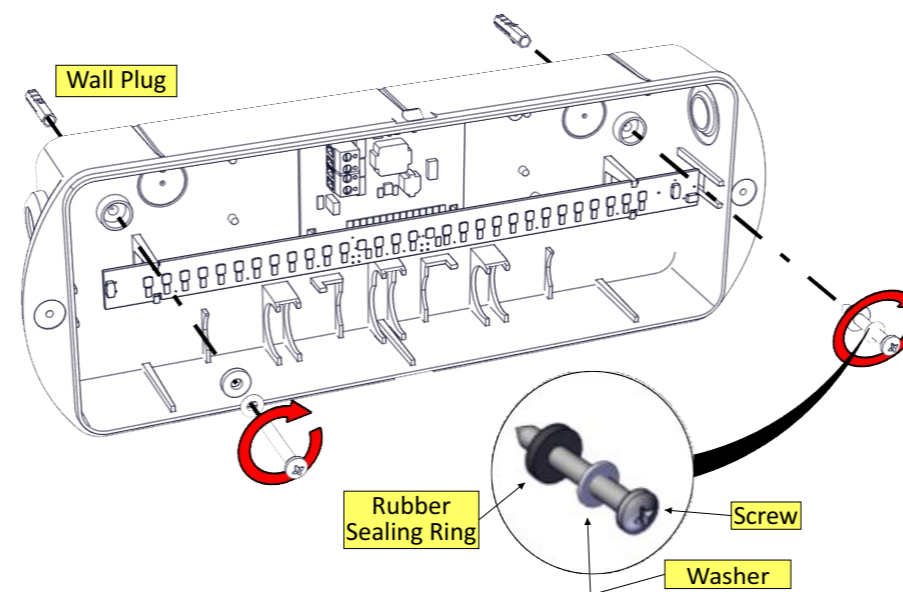
Place a flat blade screwdriver to the recesses (A) and pull up gently the reflector (B) to remove it.

2



Install the two rubber gaskets to the holes of the base. Make sure that they are not deformed.

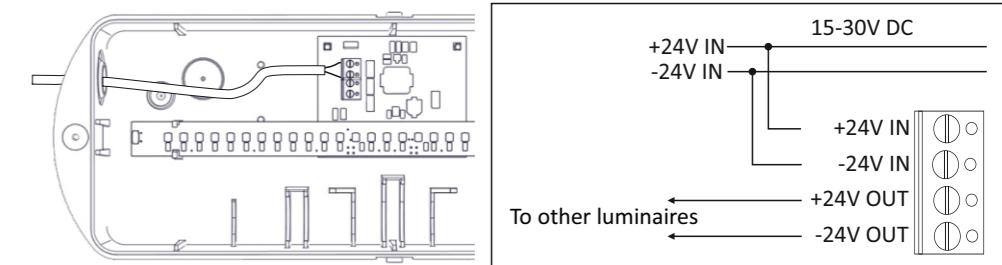
3



Install the plastic base (with the included mounting accessories).

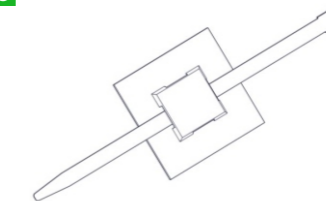
WARNING!! To preserve the IP65 rating, fit the screws with the metallic washers and rubber sealing rings.

4



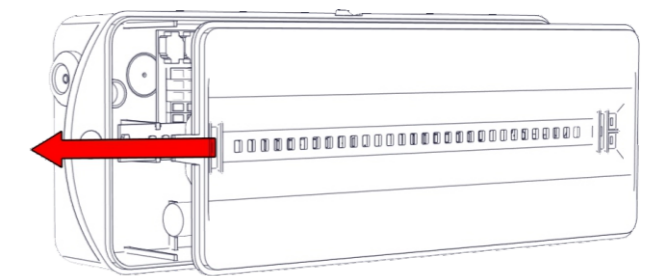
Make a hole in the center of the rubber gasket by using a small screwdriver. Pass the round cable through the rubber gasket. Connect the mains cable according to the connections diagrams above. **WARNING!!** Isolate the mains power supply before making the connections.

5



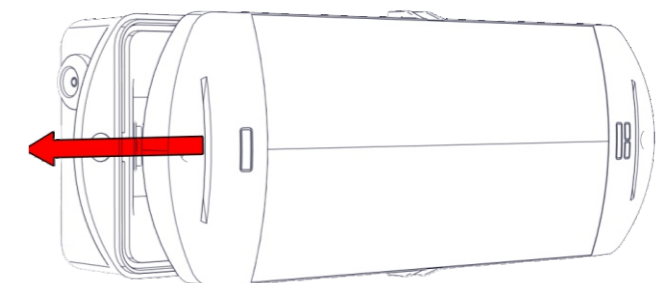
Install the included tie-wrap to the adhesive tether loop and fasten securely the power cable in order to anchor it.

6



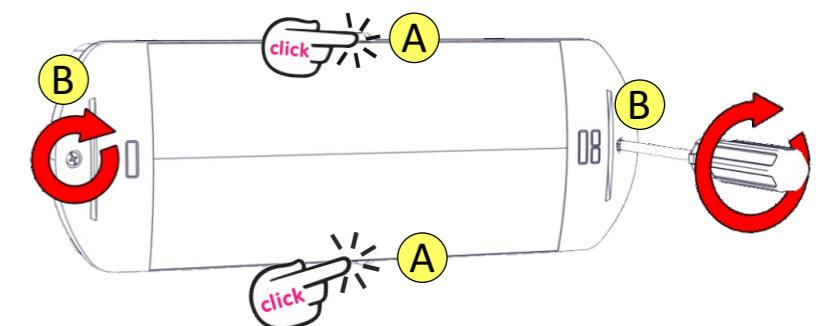
Refit the reflector (Mind the holes of the indications).

7



Refit the diffuser (Mind the holes of the indications).

8



The plastic latches (A) must be secured (click sound). Fasten the 2 screws (B). (Tightening torque 1.2N*m)

9

NOTE: LED= Light Emitting Diode

LABELING EXPLANATION:

Z: Central Supply

1: Maintained/non-maintained operation (*)

G: Internally illuminated safety sign

(*) Maintained operation: The luminaire lights its illumination source, when it is powered by the mains power supply or not.

Non Maintained operation: The luminaire lights its illumination source, only in power supply's failure.

Note!! The installer should fill in, on the specification label, the letter **G** if the luminaire is used as a safety sign.



ATTENTION

The light source contained in this luminaire shall only be replaced by the manufacturer, or his agent, or a similar qualified person.

NOTE! The light source is non-user replaceable.

Technical Characteristics

	GR-1926/15L/24V DC	GR-1926/30L/24V DC
OPERATION VOLTAGE	15-30 VDC	
MAXIMUM POWER CONSUMPTION	1W	2W
WIRE CROSS SECTION	0.8 - 1.5 mm ²	
LIGHT SOURCE	15 white LEDs	30 white LEDs
LIGHT SOURCE LUMINOUS FLUX	125 lm	255 lm
DEGREES OF COVER PROTECTION	IP65	
PRODUCED IN ACCORDANCE WITH	EN 60598-1, EN 60598-2-22, EN 55015, EN 61547	
VIEWING DISTANCE (as safety sign)	22m	
OPERATION TEMPERATURE RANGE	-30 to 50 °C	
RELATIVE HUMIDITY	Up to 95%	
CONSTRUCTION MATERIAL	ABS/PC, PC	
EXTERNAL DIMENSIONS (L x W x H)	315 x 120x 65 mm	
WEIGHT	500gr.	
GUARANTEE	3 years	

LED Characteristics

MANUFACTURER	Olympia Electronics S.A.	
MODEL NUMBER	2402159/15L	2402159/30L
VOLTAGE RANGE	8.5-10.5V DC	
NOMINAL POWER	1W	2W
CONNECTIONS	Non reversible connection between main pcb and led module	
TEMPERATURE (tc)	47°C max. across the board	

Warranty

Olympia Electronics guarantees the quality, condition and operation of the goods. The period of warranty is specified in the official catalogue of Olympia Electronics and also in the technical leaflet, which accompanies each product. This warranty ceases to exist if the buyer does not follow the technical instructions included in official documents given by Olympia Electronics or if the buyer modifies the goods provided or has any repairs or re-setting done by a third party, unless Olympia Electronics has fully agreed to them in writing. Products that have been damaged can be returned to the premises of our company for repair or replacement, as long as the warranty period is valid.

Olympia Electronics reserves the right to repair or to replace the returned goods and to or not charge the buyer depending on the reason of deflection. Olympia Electronics reserves the right to charge or not the buyer the transportation cost.



72nd km. O.N.R. Thessaloniki-Katerini
P.C. 60300 P.O. Box 06 Eginio Pierias Greece

www.olympia-electronics.com

info@olympia-electronics.gr



GR-1926/30L/24VDC
GR-1926/15L/24VDC
WATERPROOF LUMINAIRE
FOR CBS 24V



Thank you for your trust in our products
Olympia Electronics - European manufacturer