

MAINS EMERGENCY CEILING MOUNTED LUMINAIRES 24VDC



TECHNICAL CHARACTERISTICS (for LED MODULE specifications see page 3)

	GR-280/24VDC	GR-281/24VDC
OPERATION VOLTAGE	15-30V DC	
MAXIMUM POWER CONSUMPTION	2.9W	
LIGHT SOURCE	1 white power LED	
ILLUMINATION	270lm	
DEGREES OF COVER PROTECTION	IP40	
PRODUCED IN ACCORDANCE WITH	EN 60598-1, EN 60598-2-22, EN 55015, EN 61547	
OPERATION TEMPERATURE RANGE	-30 to 50 °C	
RELATIVE HUMIDITY	Up to 95%	
CONSTRUCTION MATERIAL	ABS/PC, PC	
EXTERNAL DIMENSION	Ø125 x 65 mm	
WEIGHT	240gr.	
GUARANTEE	3 years	

Thank you for your trust in our products
Olympia Electronics - European manufacturer

GENERAL

These luminaires are used in places where emergency luminaires (CBS 24V) are needed. Each luminaire must be permanently connected to mains power supply. The luminaires GR-280/24VDC are suitable for corridors lighting and the GR-281/24VDC for open area lighting.

ATTENTION!!!

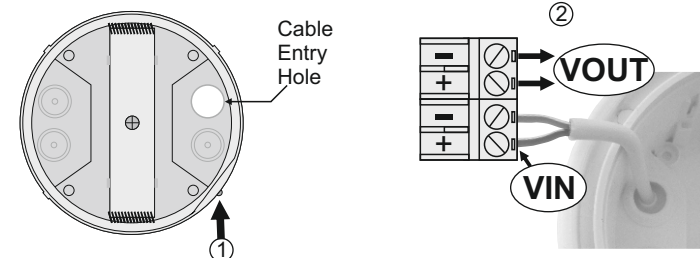
1. Operations for installation, maintenance or testing must be done by authorized personnel only.

NOTE: LED= Light Emitting Diode
LABELING EXPLANATION:
Z: Central supply
1: Maintained

INSTALLATION

To install the luminaire follow the installation procedure as described below.

INSTALLATION INSTRUCTIONS



Initial installation

- ① Untighten the screw but do not remove it and pull up the reflector.
- ② Use any round supply cable with an external diameter of 5-10m (H05RN-F type 2x1mm² or any other type, at least equal to its mechanical and electrical properties).
WARNING!! The cable must not be deformed in order to preserve the IP rating.
Install one of the included gaskets into the cable entry hole and make a hole in the center by using a small screwdriver. Pass the round cable through the gasket. Install the other one into the other hole. Detach the power terminal, connect the wires (as shown in the picture) and attach the power terminal (10A max).
- ③ Refit the reflector (mind the correct orientation), tighten the screw securely and the luminaire is ready for mounting.

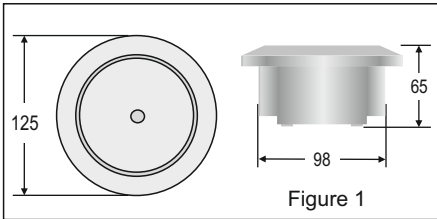


Figure 1

Mounting the lamp in suspended ceiling.

Set up the lamp to the suspended ceiling as it is shown below (Required opening 110mm):

Step 1

Bend the springs, to get into the hole of the suspended ceiling, as you can see to the next figure.

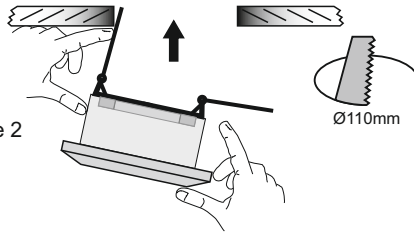


Figure 2

Step 2

Push up the luminaire, as shown in figure 3.

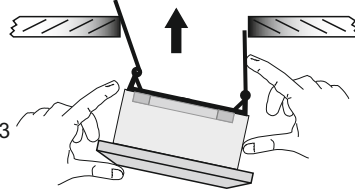


Figure 3

Step 3

Continue to push upwards and the lamp locks.

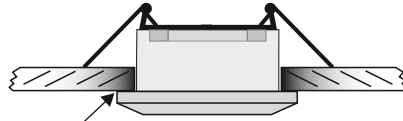
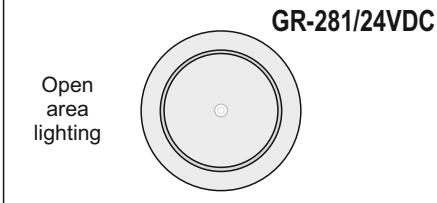
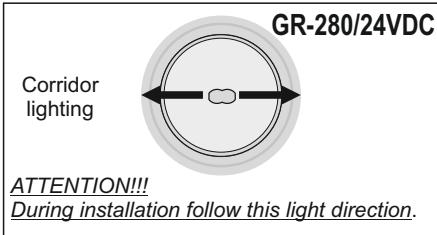


Figure 4

If you want to pull off the device, put a flat blade screwdriver, between the device and the ceiling.



GR-281/24VDC



GR-280/24VDC

ATTENTION!!!
During installation follow this light direction.



CAUTION : Do not view directly with bare eyes.

SURFACE MOUNTING

Install the luminaire according to following steps:

Step 1. Follow the step 1 of the installation instructions.

Step 2. Unfasten the retaining screw (Figure 5) and detach the part for suspended ceiling installation.

Step 3. Drill 2 holes on the base (Figure 6) using a 4mm drill bit in order to permit the retaining screws to pass. Mark these two drilled points on the required mounting location, drill the holes and install the supplied plastic plugs. **ATTENTION!!** Especially for the GR-280/24VDC luminaire installation on the ceiling you must align the base with the indications on the luminaire's base.

Step 4. Install the decorative rim (package included). Next, use the 2 fasteners to install the unit to the require location.

Step 5. Follow the steps 2,3 and 4 of the installation instructions.

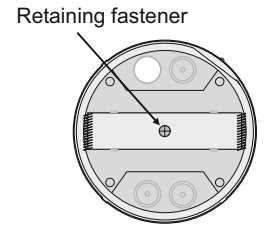


Figure 5

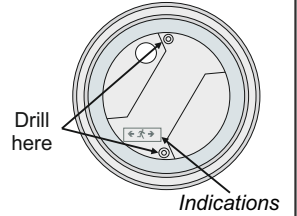


Figure 6

LED MODULE CHARACTERISTICS

LED MODULE CHARACTERISTICS	
GR-280/24VDC / GR-281/24VDC	
Manufacturer	Olympia Electronics S.A.
Model Number	1110143
Voltage Range	3-3.2V DC
Nominal Power	2.2W
Connections	Non reversible connection between main pcb and led module
Temperature (tc)	70 °C max. across the board

WARRANTY

Olympia Electronics guarantees the quality, condition and operation of the goods. The period of warranty is specified in the official catalogue of Olympia Electronics and also in the technical leaflet, which accompanies each product. This warranty ceases to exist if the buyer does not follow the technical instructions included in official documents given by Olympia Electronics or if the buyer modifies the goods provided or has any repairs or re-setting done by a third party, unless Olympia Electronics has fully agreed to them in writing. Products that have been damaged can be returned to the premises of our company for repair or replacement, as long as the warranty period is valid.

Olympia Electronics reserves the right to repair or to replace the returned goods and to or not charge the buyer depending on the reason of defection. Olympia Electronics reserves the right to charge or not the buyer the transportation cost.

HEAD OFFICE

72nd km. O.N.R. Thessaloniki-Katerini
P.C. 60300 P.O. Box 06 Eginio Pierias Greece
www.olympia-electronics.gr
info@olympia-electronics.gr