

"COMFORT LIGHT" SERIES FOR NON MAINTAINED EMERGENCY LUMINAIRES WITH WHITE LEDs



TECHNICAL CHARACTERISTICS (for LED MODULE Specs. see page 5)

	GR-408/3L	GR-408/6L	GR-409/3L	GR-409/6L
OPERATION VOLTAGE	220-240VAC/50-60Hz			
MAXIMUM POWER CONSUMPTION	3VA	3.5VA		4VA
BATTERIES (Ni-Cd)	3.6V/1Ah	3.6V/1.5Ah		3.6V/3Ah
BATTERY PROTECTION	From overcharge and deep discharge			
INDICATIONS - CONTROLS	Battery charging LED, TEST button			
CHARGING TIME	24h			
MINIMUM AUTONOMOUS DURATION	90min		180min	
ILLUMINATION SOURCE	3 power LED	6 power LED	3 power LED	6 power LED
EMERGENCY ILLUMINATION	150lm	300lm	150lm	300lm
DEGREES OF COVER PROTECTION	IP 42			
PRODUCED IN ACCORDANCE WITH	EN 60598-1, EN 60598-2-22, EN 55015, EN 61547, EN 61000-3-2, EN 61000-3-3			
OPERATION TEMPERATURE RANGE	5 to 40 °C			
RELATIVE HUMIDITY	Up to 95%			
CONSTRUCTION MATERIALS	ABS/PC, PC			
EXTERNAL DIMENSIONS	272 x 121 x 50 mm			
TYPICAL WEIGHT	600gr.	700gr.		730gr.
GUARANTEE	3 years (1 year for the battery)			

**Thank you for your trust in our products
Olympia Electronics - European manufacturer**

GENERAL

These luminaires are used indoors (ta 40°C) where emergency light is needed.

Each luminaire must be permanently connected to mains power supply.

In normal operation the battery is charging and the 2 yellow LED's light in the screen.

In case of a mains power supply failure the luminaire will light the illumination LEDs automatically in emergency mode. When the mains power supply is restored the device turns to normal operation.

ATTENTION!!!

1. Operations for installation, maintenance or testing must be done by authorized personnel only.

2. The device must be connected to the mains power supply through a fuse dependent by the total amount of the line's power load.

3. It is suggested to check every month the indication LED for battery charging, and by pushing the TEST button to check the emergency circuit. The illumination LEDs should light as long as the TEST button is pressed. In the opposite condition contact the

installer.

4. It is suggested to check every 6 months the minimum autonomous duration by disconnecting the mains power supply. Count the time that the luminaire lights and in case of less time than the minimum autonomous duration the battery must be replaced. If the measured time is considerably less than the minimum autonomous duration contact the installer. In case of battery or light source replacement, these must be replaced by parts of the same type, by the manufacturer or by a competent person.

5. In case of inactive use for a period greater than 2 months, disconnect the battery by pulling out the battery's connector.

6. **It is not allowed to discard batteries in to common trash bins, they must be discarded only in battery recycling points. Do not incinerate.**



INSTALLATION

To install the luminaire follow the installation instructions on page 4.

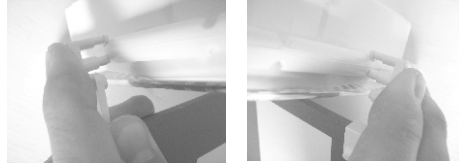
MARKING PANEL SP-115

A marking panel SP-115 can be installed on the luminaire in 3 different locations. This marking panel is installed perpendicular to the diffuser of the luminaire, as shown in the pictures below. The panel is pre-printed and has a plastic accessory on each side that is used to fasten the panel to the luminaires. There are 2 arrow stickers that can be placed in each side of the marking panel to point to the desired direction.

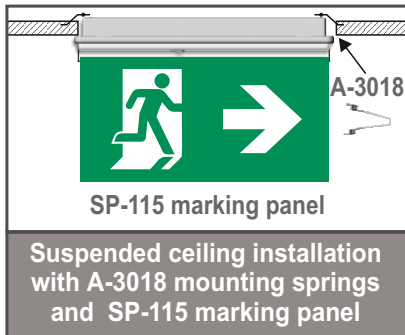
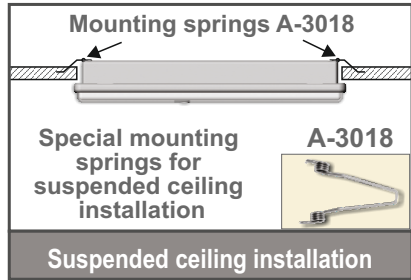
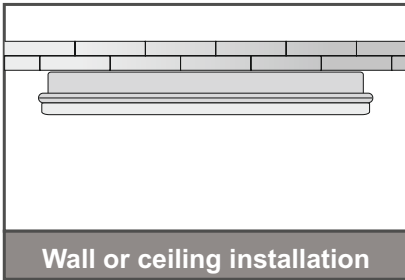


Placing the SP-115 marking panel

Place the plastic mounting accessories of the marking panel as shown in pictures.



Installation methods



Mounting methods

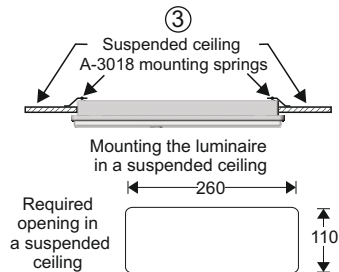
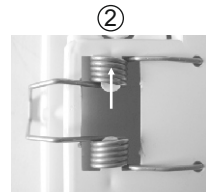
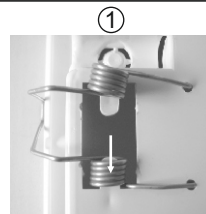
All luminaires, can be mounted either surface or in suspended ceilings.

Suspended ceiling installation.

On the bottom of the base plastic of the luminaire there are two H shaped cut outs. These are used to install the A-3018 mounting springs.

1. With a sharp tool remove the appropriate plastic pieces to fit the mounting springs. First place the edges of the mounting spring to the respective holes and install the one end of the coil to the support axis.
2. Install the other end of the coil to the other support axis.
3. Bend the springs and place the luminaire to the respective suspended ceiling's hole.

The luminaire's placement to the suspended ceiling must be done after the connection with power supply cables.



NOTE: LED= Light Emitting Diode

LABELING EXPLANATION:

X: Self contained

0: Non Maintained (*)

A: Including test device

G: Internally illuminated safety sign

***90:** 1.5 hour duration

180: 3 hours duration

Note!! The installer should fill in, on the specification label, the letter **G** if the luminaire is used as a safety sign.

↓
X 0 A G * 9 0

(*) Non Maintained operation: The luminaire lights its illumination source, only in power supply's failure.

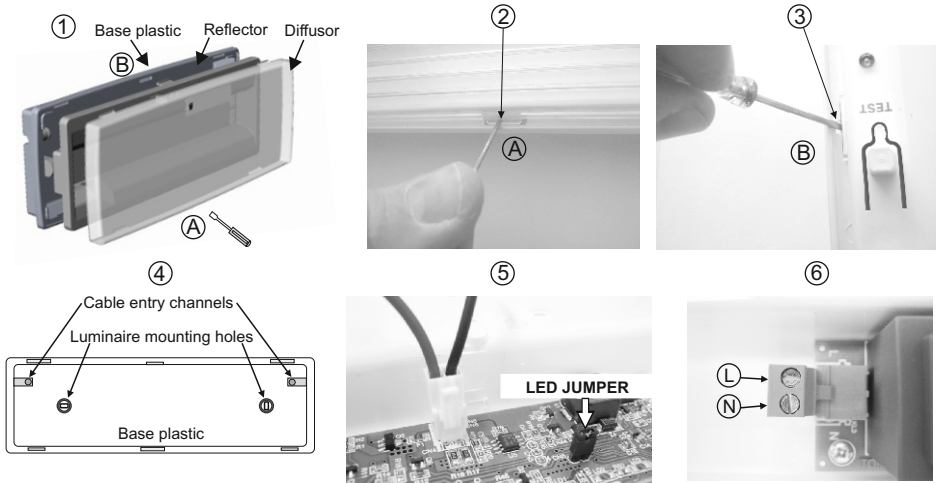
Maintained operation: The luminaire lights its illumination source, when it is powered by the mains power supply or not.



The light source contained in this luminaire shall only be replaced by the manufacturer, or his agent, or a similar qualified person.

NOTE! *The light source is non-user replaceable.*

INSTALLATION INSTRUCTIONS



- ① To install the luminaire you must dismantle it into 3 parts.
- ② Place a flat blade screwdriver in the area **A** to release the diffuser's plastic hooks.
- ③ Place a flat blade screwdriver in the area **B** to release the reflector's plastic hook.
- ④ Use the included mounting parts to mount the base plastic.
Pass the mains cable through a cable entry channel. The luminaire must be connected to a permanent electrical installation to ensure the immobilization of the cable.
- ⑤ Place the battery's connector to the corresponding connector on the P.C.B. **NOTE!! If you don't need the yellow led's to light in normal operation, then remove the led jumper.**
- ⑥ Connect the mains cables to the terminal blocks.
- ⑦ Refit the removed parts in steps 2 and 3 (mind the correct orientation) and the luminaire is ready to operate.

NOTE!!

After finishing the installation you must power the luminaire at least for 24 hours for battery charging to perform the nominal autonomy.

Battery replacement

It can be done only by a competent person and after the mains interruption

1. Follow the step 2 and 3 of the installation procedure.
2. Disconnect the connector and remove the old battery.
3. Connect the new battery with the same type (step 5 of the installation procedure) and place it in the position of the old one.
4. Follow the step 7 of the installation procedure and power the device.

LED MODULE CHARACTERISTICS

	GR-408/3L	GR-409/3L	GR-408/6L	GR-409/6L
Manufacturer	Olympia Electronics S.A.			
Model Number	1911143		2011143	
Voltage Range	17.4 - 20.4VDC		11.6 - 13.6VDC	
Nominal Power	3W		6W	
Connections	Non reversible connection between main pcb and led module			
Temperature (tc)	50 °C max. across the board		55 °C max. across the board	

WARRANTY

Olympia Electronics guarantees the quality, condition and operation of the goods. The period of warranty is specified in the official catalogue of Olympia Electronics and also in the technical leaflet, which accompanies each product. This warranty ceases to exist if the buyer does not follow the technical instructions included in official documents given by Olympia Electronics or if the buyer modifies the goods provided or has any repairs or re-setting done by a third party, unless Olympia Electronics has fully agreed to them in writing. Products that have been damaged can be returned to the premises of our company for repair or replacement, as long as the warranty period is valid. Olympia Electronics reserves the right to repair or to replace the returned goods and to or not charge the buyer depending on the reason of defection. Olympia Electronics reserves the right to charge or not the buyer the transportation cost.

HEAD OFFICE

72nd km. O.N.R. Thessaloniki-Katerini
P.C. 60300 P.O. Box 06 Eginio Pierias Greece
www.olympia-electronics.gr
info@olympia-electronics.gr