

GR-440/12L

**"COMFORT LIGHT" SERIES FOR NON MAINTAINED
EMERGENCY LUMINAIRE WITH WHITE LEDs**



TECHNICAL CHARACTERISTICS (for LED MODULE specifications see page 3)

OPERATION VOLTAGE	220-240V AC/50-60Hz
MAXIMUM POWER CONSUMPTION	4W / 4.3VA
BATTERY	3.6V/3Ah (Ni-Cd)
BATTERY PROTECTION	From overcharge and deep discharge
INDICATIONS - CONTROLS	Battery charging LED, TEST button
CHARGING TIME	24h
MINIMUM AUTONOMOUS DURATION	480min
ILLUMINATION SOURCE	12 white LEDs
EMERGENCY ILLUMINATION	100lm
DEGREES OF COVER PROTECTION	IP42
PRODUCED IN ACCORDANCE WITH	EN 60598-1, EN 60598-2-22, EN 55015, EN 61547, EN 61000-3-2, EN 61000-3-3
OPERATION TEMPERATURE RANGE	5 to 40 °C
RELATIVE HUMIDITY	Up to 95%
CONSTRUCTION MATERIALS	ABS/PC, PC
EXTERNAL DIMENSIONS	272 x 121 x 50 mm
TYPICAL WEIGHT	685gr.
GUARANTEE	3 years (1 year for the battery)

**Thank you for your trust in our products
Olympia Electronics - European manufacturer**

GENERAL

These luminaires are used indoors (ta 40°C) where emergency light is needed. Each luminaire must be permanently connected to mains power supply. In normal operation the battery is charging and the 2 yellow LED's light in the screen. In case of a mains power supply failure the luminaire will light the illumination LEDs automatically in emergency mode. When the mains power supply is restored the device turns to normal operation.

INSTALLATION

To install the luminaire follow the installation instructions on page 4.

ATTENTION!!!

1. Operations for installation, maintenance or testing must be done by authorized personnel only.
2. The device must be connected to the mains power supply through a fuse dependent by the total amount of the line's power load.
3. It is suggested to check every month the indication LED for battery charging, and by pushing the TEST button to check the emergency circuit. The illumination LEDs should light as long as the TEST button is pressed. In the opposite condition contact the installer.
4. It is suggested to check every 6 months the minimum autonomous duration by disconnecting

the mains power supply. Count the time that the luminaire lights and in case of less time than the minimum autonomous duration the battery must be replaced. If the measured time is considerably less than the minimum autonomous duration contact the installer. In case of battery or light source replacement, these must be replaced by parts of the same type, by the manufacturer or by a competent person.

5. In case of inactive use for a period greater than 2 months, disconnect the battery by pulling out the battery's connector.

6. **It is not allowed to discard batteries in to common trash bins, they must be discarded only in battery recycling points. Do not incinerate.**



Battery replacement.

It can be done only by a competent person and after the mains interruption.

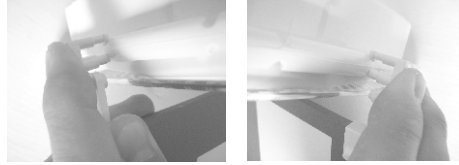
1. Follow the step 2 and 3 of the installation procedure.
2. Disconnect the connector and remove the old battery.
3. Connect the new battery with the same type (step 5 of the installation procedure) and place it in the position of the old one.
4. Follow the step 7 of the installation procedure and power the device.

MARKING PANEL SP-115

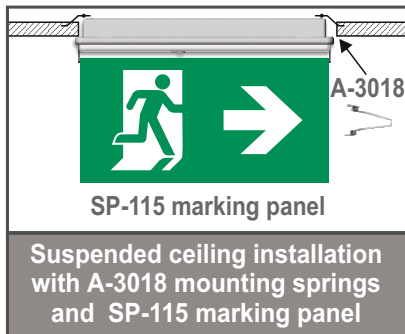
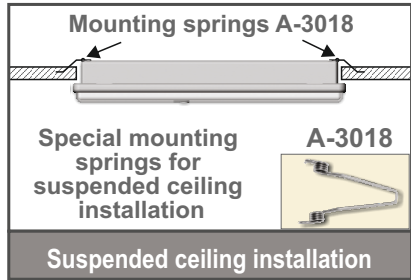
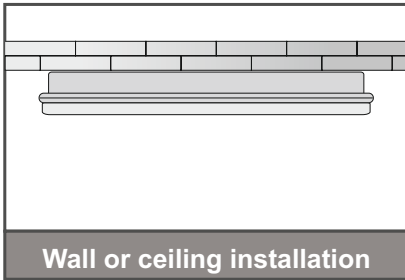
A marking panel SP-115 can be installed on the luminaire in 3 different locations. This marking panel is installed perpendicular to the diffusor of the luminaire, as shown in the pictures below. The panel is pre-printed and has a plastic accessory on each side that is used to fasten the panel to the luminaires. There are 2 arrow stickers that can be placed in each side of the marking panel to point to the desired direction.

Placing the SP-115 marking panel

Place the plastic mounting accessories of the marking panel as shown in pictures.



Installation methods



Mounting methods

All luminaires, can be mounted either surface or in suspended ceilings.

Suspended ceiling installation.

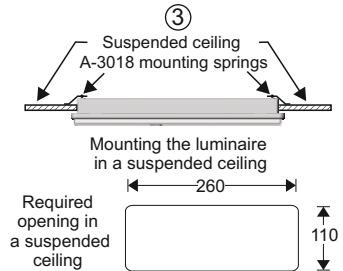
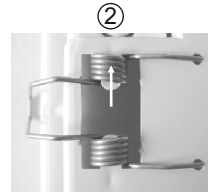
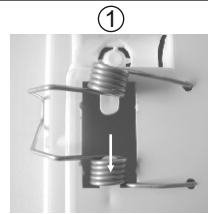
On the bottom of the base plastic of the luminaire there are two H shaped cut outs. These are used to install the A-3018 mounting springs.

1. With a sharp tool remove the appropriate plastic pieces to fit the mounting springs. First place the edges of the mounting spring to the respective holes and install the one end of the coil to the support axis.

2. Install the other end of the coil to the other support axis.

3. Bend the springs and place the luminaire to the respective suspended ceiling's hole.

The luminaire's placement to the suspended ceiling must be done after the connection with power supply cables.



NOTE: LED= Light Emitting Diode
LABELING EXPLANATION:
X: Self contained
0: Non Maintained (*)
A: Including test device
G: Internally illuminated
480: 480min duration

Note!! The installer should fill in, on the specification label, the letter **G** if the luminaire is used as a safety sign.

↓
X 0 A G 4 8 0

(*) Non Maintained operation: The luminaire lights its illumination source, only in power supply's failure.

Maintained operation: The luminaire lights its illumination source, when it is powered by the mains power supply or not.



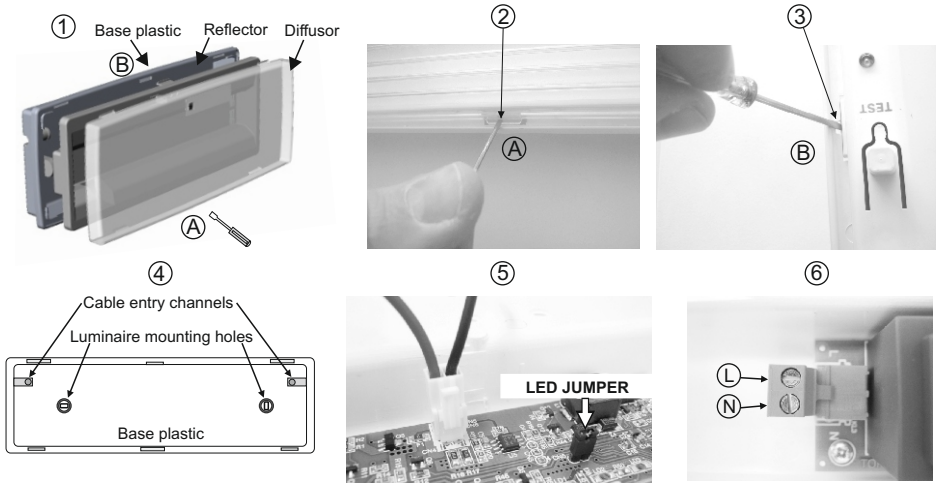
The light source contained in this luminaire shall only be replaced by the manufacturer, or his agent, or a similar qualified person.

NOTE! The light source is non-user replaceable.

LED MODULE CHARACTERISTICS

LED MODULE CHARACTERISTICS	
	GR-440/12L
Manufacturer	Olympia Electronics S.A
Model Number	0803123
Voltage Range	8.7-10.8V DC
Nominal Power	780mW
Connections	Cable connection between main pcb and led module
Temperature (tc)	40 °C max. across the board

INSTALLATION INSTRUCTIONS



- ① To install the luminaire you must dismantle it to 3 parts.
- ② Place a flat blade screwdriver in the area **A** to release the diffuser's plastic hooks.
- ③ Place a flat blade screwdriver in the area **B** to release the reflector's plastic hook.
- ④ Use the included mounting parts to mount the base plastic.
Pass the mains cable through a cable entry channel. The luminaire must be connected to a permanent electrical installation to ensure the immobilization of the cable.
- ⑤ Place the battery's connector to the corresponding connector on the P.C.B. **NOTE!! If you don't need the yellow led's to light in normal operation, then remove the led jumper.**
- ⑥ Connect the mains cables to the terminal blocks.
- ⑦ Refit the removed parts in steps 2 and 3 (mind the correct orientation) and the luminaire is ready to operate.

NOTE!!

After finishing the installation you must power the luminaire at least for 24 hours for battery charging to perform the nominal autonomy.

WARRANTY

Olympia Electronics guarantees the quality, condition and operation of the goods. The period of warranty is specified in the official catalogue of Olympia Electronics and also in the technical leaflet, which accompanies each product. This warranty ceases to exist if the buyer does not follow the technical instructions included in official documents given by Olympia Electronics or if the buyer modifies the goods provided or has any repairs or re-setting done by a third party, unless Olympia Electronics has fully agreed to them in writing. Products that have been damaged can be returned to the premises of our company for repair or replacement, as long as the warranty period is valid. Olympia Electronics reserves the right to repair or to replace the returned goods and to or not charge the buyer depending on the reason of deflection. Olympia Electronics reserves the right to charge or not the buyer the transportation cost.

HEAD OFFICE

72nd km. O.N.R. Thessaloniki-Katerini
P.C. 60300 P.O. Box 06 Eginio Pierias Greece

www.olympia-electronics.gr

info@olympia-electronics.gr