

Package Contents

- 1 Luminaire
- 1 Set of Pictograms
- 1 Mounting accessories
- 1 Manual

General

These luminaires are used indoors and outdoors (ta 40°C) where emergency light is needed. Each luminaire must be permanently connected to mains power supply. In normal operation the led strip lights and the battery is charging. In case of a mains power supply failure the luminaire will light the led strip automatically in emergency mode. When the mains power supply is restored the device turns to normal operation.

Manual Operational Test
Remove the diffuser and then by pressing the test button briefly an operation test is initiated. The light source and the emergency circuit of the device are tested. The manual test can be conducted only if the mains power supply and the battery are connected. During this test period the LAMP TEST LED will blink. The battery must have adequate charge. This test lasts for 3 seconds.

Lens Removal
When the luminaire is used without the pictograms or the SP-1100 and you require more light output then remove the lens that covers the LEDs.

ATTENTION!!!
1. Operations for installation, maintenance or testing must be done by authorized personnel only.
2. Always use in any case round mains cable, with a diameter of 5-10mm (H05RN-F type 2x1mm² or any other type, at least equal to it's mechanical and electrical properties). ATTENTION!! The cable

must not be deformed in any way (This requirement is important to ensure the IP rating).

3. The device must be connected to the mains power supply through a circuit breaker that is depends on the total line's power load.
4. In case of battery replacement, it must be replaced by the same type, by the manufacturer or a competent person.
5. In case of inactive use for a period greater than 2 months, disconnect the battery by pulling out the battery's connector.
6. **It is not allowed to discard batteries into common trash bins, they must be discarded only in battery recycling points. Do not incinerate.**

- Connectors**
- KL1: Power connector
 - CN1: Maintained, Non maintained selection
 - CN3: Battery connector
 - CN4: LED connector
 - CN5: LED connector

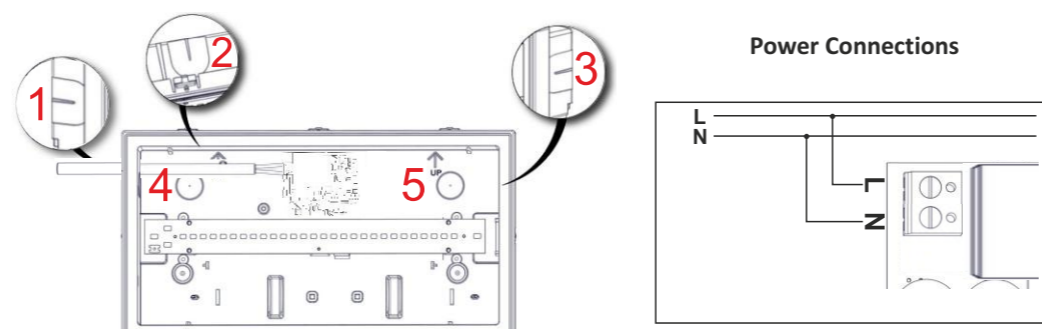
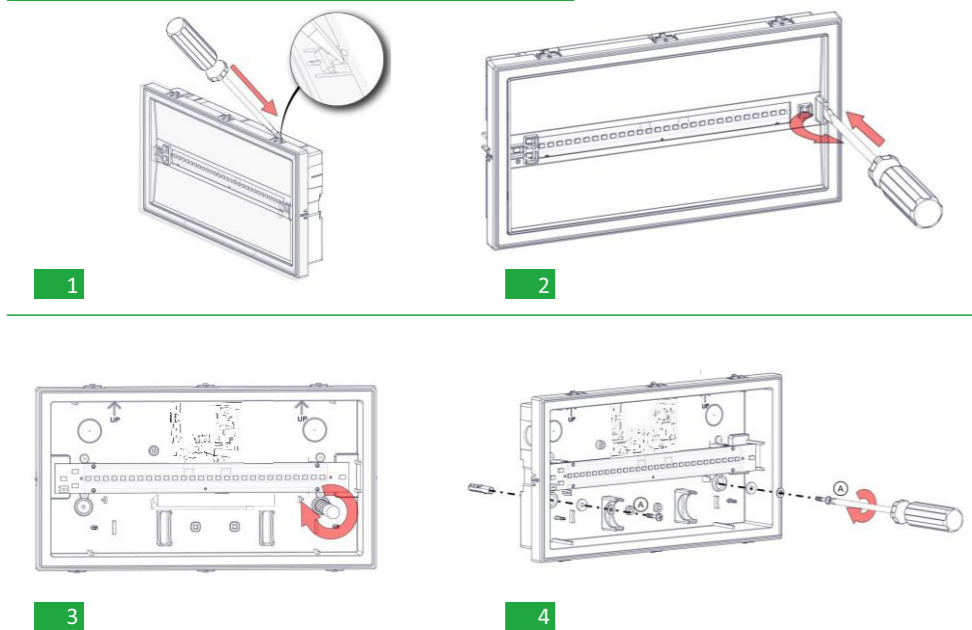
Indications LED Status

CHARGE (green)	Description
	Permanently ON
	Charging
	Emergency mode or battery disconnected

Note:

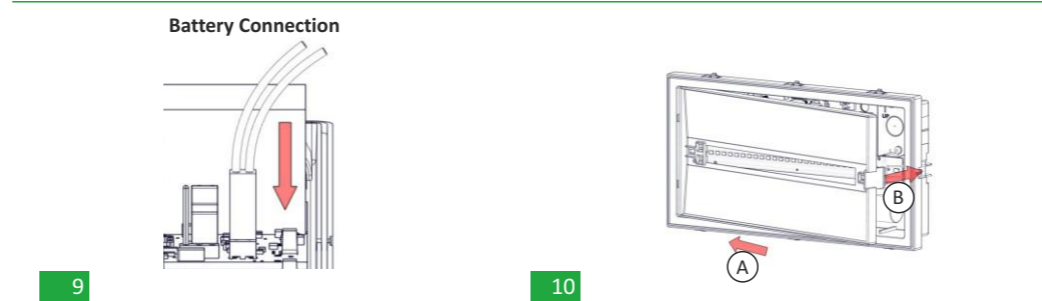
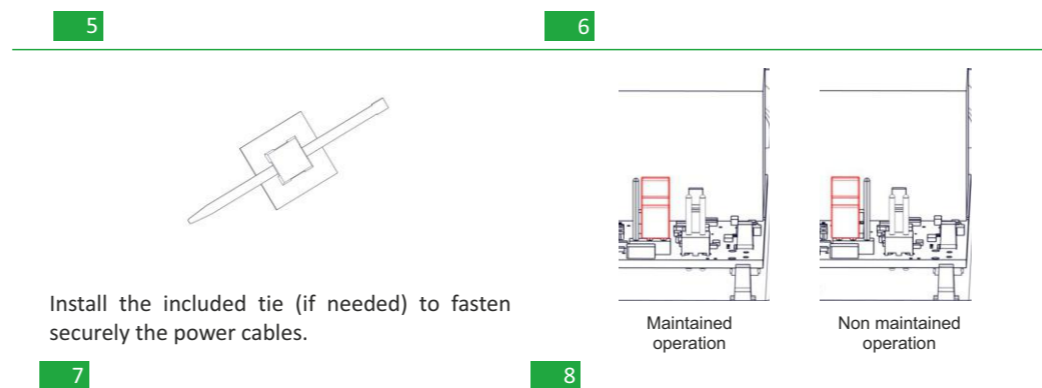
	Permanently ON
	Off

Installation Instructions

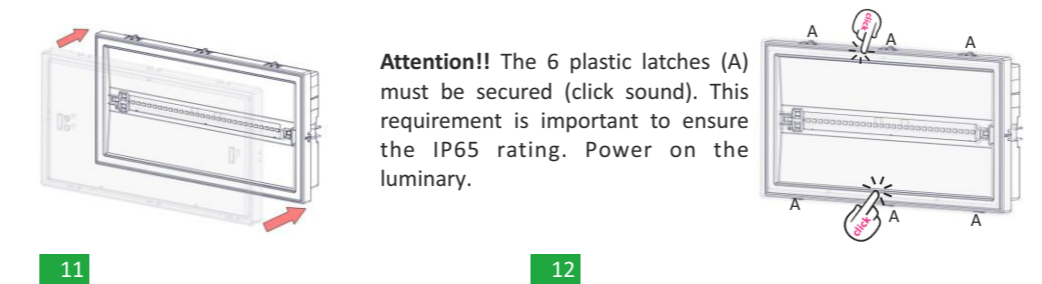


Drill one of the 5 available holes with a 16-18mm drill bit. Install the included rubber gasket and pass through the power cables.

N for neutral and L for live wire.



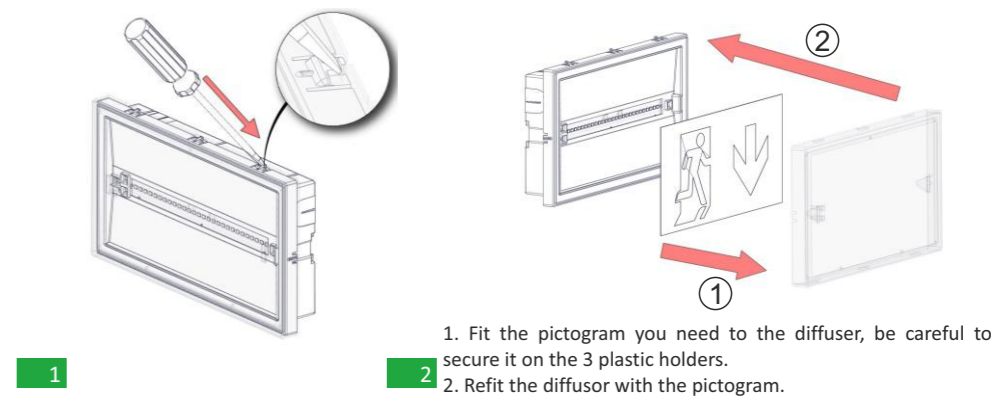
This unit has replaceable batteries that can be replaced or changed by the manufacturer or a competent person.



Commissioning

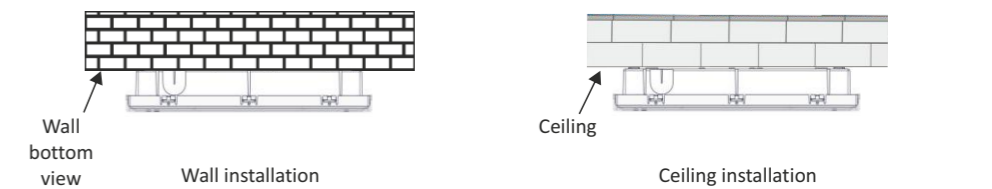
- After installation, a 24 hours charging cycle must be completed, in order to achieve the nominal autonomy.
- During commissioning of the luminaire write the commissioning date on the battery.
- When power is applied to the unit inspect that the CHARGE indicator is steady, and that the led lamp is lit (maintained operation) or OFF (non-maintained operation)
- A full duration test should be conducted after 24 hours of continuous charging. The test is initiated by isolating the mains power supply. Verify that the LED lamp is lit during the test period for at least the stated duration.

Pictogram Installation



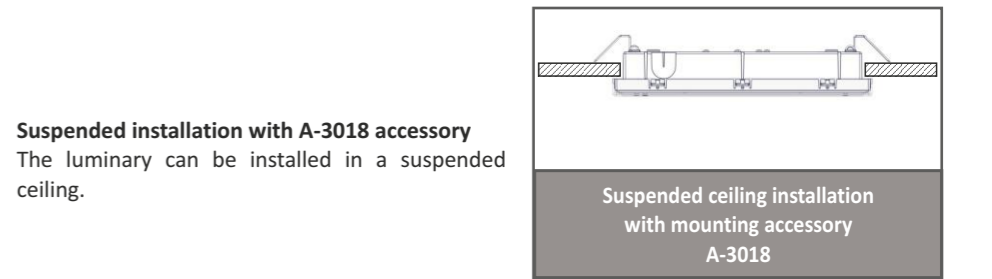
Mounting Methods

Only luminaires can be surface mounted on walls or ceilings. For these mounted installations, special accessories are included.

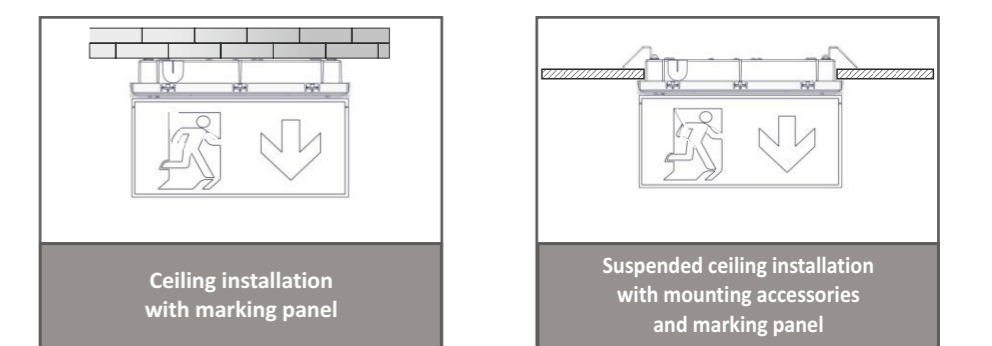


Extra Mounting Methods *

* ATTENTION!!! The below mounting methods can be done after request of the necessary mounting accessories!!



A marking panel (SP-1100) can be installed on the luminaire pointing the desired direction.



Battery Replacement

- It can be done only by a competent person and after the mains interruption.
1. Follow step 1 of the installation instructions and remove the diffuser.
 2. Follow step 2 of the installation instructions and remove the reflector.
 3. Remove the old battery and place a new one of the same type and characteristics.
 4. Replace the removed parts (previous steps 1 and 2).