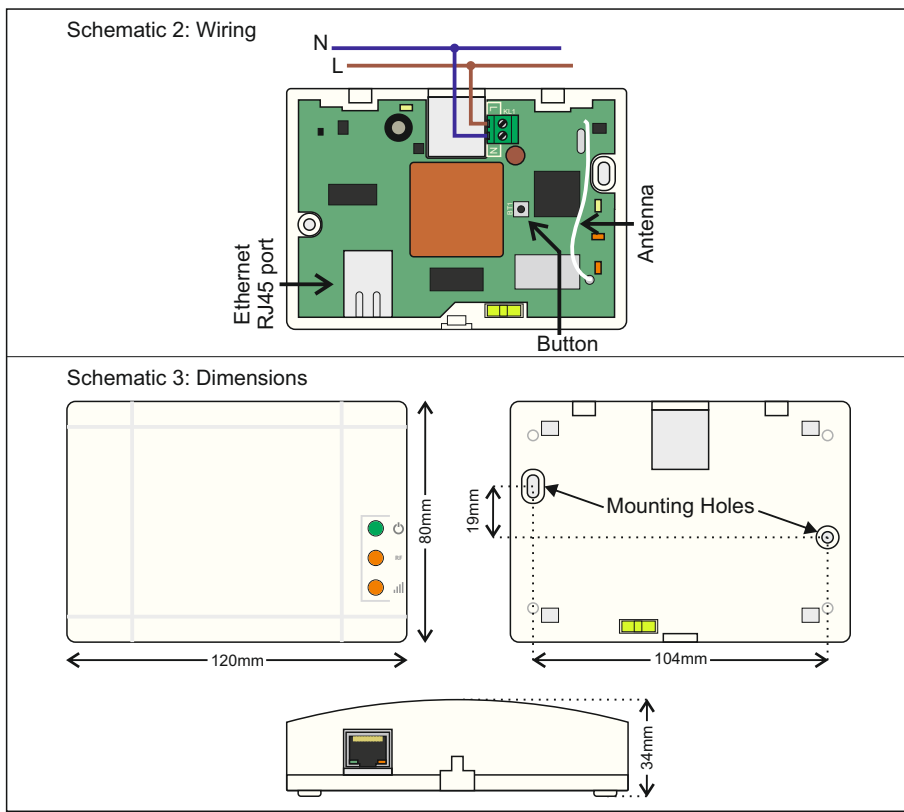


Important note:

This device is powered from the mains, so in case of mains interruption it will stop working. If your wireless network needs to be "alive" during this situation, care should be taken so that the device is powered by a UPS system.

When the front face is removed in order to access the internal button, do not touch any other areas other than the button. Live voltage is present to specific areas of the device.

**WARRANTY**

Olympia Electronics guarantees the quality, condition and operation of the goods. The period of warranty is specified in the official catalogue of Olympia Electronics and also in the technical leaflet, which accompanies each product. This warranty ceases to exist if the buyer does not follow the technical instructions included in official documents given by Olympia Electronics or if the buyer modifies the goods provided or has any repairs or re-setting done by a third party, unless Olympia Electronics has fully agreed to them in writing. Products that have been damaged can be returned to the premises of our company for repair or replacement, as long as the warranty period is valid. Olympia Electronics reserves the right to repair or to replace the returned goods and to or not charge the buyer depending on the reason of deflection. Olympia Electronics reserves the right to charge or not the buyer the transportation cost.

HEAD OFFICE

72nd km. O.N.R. Thessaloniki-Katerini
P.C. 60300 P.O. Box 06 Eginio Pierias Greece
www.olympia-electronics.gr
info@olympia-electronics.gr



for a safer world

GR-7601 Ethernet Gateway**TECHNICAL CHARACTERISTICS**

Operation voltage	220 - 240 VAC (50 - 60Hz)
Consumption	2VA
Tx/Rx frequency range	868 - 870MHz
Tx power	11dBm
Housing	ABS/PC
Ambient temperature range	5 to 40 °C
Storage temperature range	-40 to 70 °C
Maximum relative humidity	Up to 95%
Weight	197gr.
Dimensions (L x W x H)	120 x 80 x 34mm
Warranty	2 years
Approvals	EN 62311:2008, EN 62368-1:2014 +AC:2015, ETSI EN 301 489-1 V1.9.2, ETSI EN 301 489-3 V1.6.1 ETSI EN 300 220-2 V3.1.1

Thank you for your trust in our products
Olympia Electronics - European manufacturer

The **GR-7601** Ethernet Gateway is the master device of the wireless emergency lighting. It transfers the received data from the GR-7600 PC Software to the wireless network and vice versa. One only Gateway can exist in each wireless network.

Features:

- Powered from mains 220 - 240VAC
- Status and signal indication LEDs
- Ethernet port (RJ45)
- Webserver
- Fast 868MHz wireless connectivity

**Indications:**

: Power On LED (Green).

RF: RF LED (Orange). Blinking when receiving data from the connected wireless devices.

: Signal broadcasting LED (Orange). Blinking indicates Gateway transmissions (beacon).

Button functions*:

- Short press (<1s): Send status message to the Master PC (through Ethernet).
- Long press (>1s and <10s): Reset Gateway.
- Extended press (>10s): Load default settings to the Gateway.

*The Button is only accessible when the front cover is removed. See schem. 2 - Wiring on page 4.

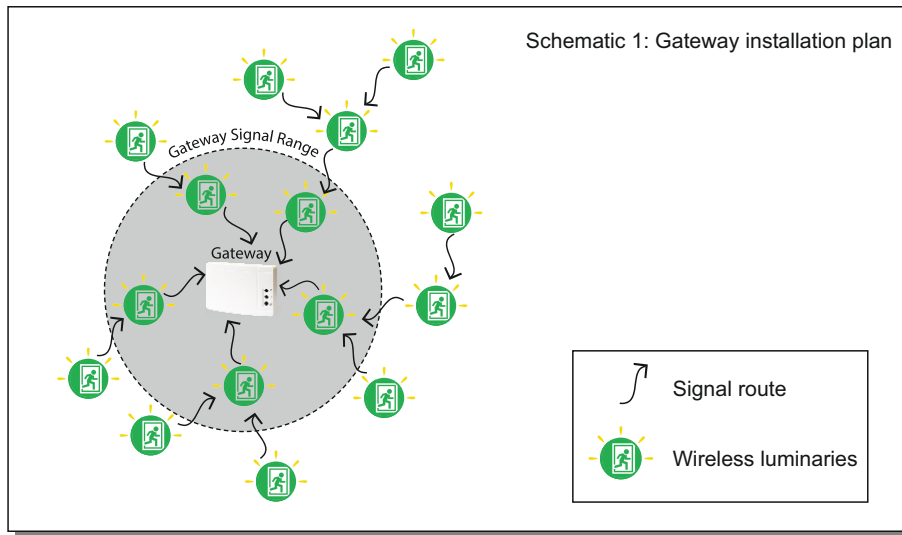
Default settings:

- IP: 10.0.9.142
- Technician menu password (webserver): 1000
- SID: 00000001
- RF Channel: 13 (869.525MHz)

Installation:

It's recommended that the **GR-7601** Ethernet Gateway is positioned at a central point of the entire wireless emergency lighting installation. At least 2 or 3 luminaires should be inside the signal range of the Gateway in order to create alternative routes for re-transmitting messages to other devices inside their own range.

See next schematic 1:



Mounting:

Install the device to a stable and visible position which has access to mains power and Local Area Network (Ethernet). It is recommended that while fitted, the LED indications are visible to a technician.

Avoid metallic surfaces, as they can affect RF signal strength. Ensure that there is not any severe RF blocking due to structural design.

Use the 2 mounting holes to fit the base on a vertical wall (concrete/brick/wood) and the embedded spirit level to make fine (horizontal) adjustments. Tighten the mounting screws when done. Connect the mains power cables. See Wiring and Dimension schematic in page 4.

Commissioning:

In order to setup the GR-7601 Ethernet Gateway and create a new wireless emergency lighting network, you will have to follow the following steps:

- Connect the GR-7601 to the Local Area Network and configure its IP address (via webserver).
- Configure the master PC's IP and MAC address (via webserver).
- Run the GR-7600 PC software and setup the new network (Network Configuration Wizard) in order to modify the SID and the RF Channel of the wireless network and isolate it from other nearby wireless networks.

See further information regarding configuring IP addresses, master PC's IP&MAC, etc in the following page:

Webserver:

In order to set up the parameters for Gateway - PC Software communication, enter the webserver. To enter webserver interface, first power on the device, connect the device to the Ethernet network (RJ45 connector) and then enter the default IP to a common Web Browser via PC (Chrome/Firefox/etc).

In order to have access to the Gateway, the IPv4 address range must be from 10.0.9.2 to 10.0.9.254, except 10.0.9.142 which is already occupied by the Gateway.

Webserver main screen interface:

LINKS		PANEL	
• TECHNICIAN MENU		LTD:	00000001
• INFORMATION NETWORK		SID:	00000001
		NETWORK CHANNEL:	00
		MODULE CONFIG:	0D05050FF8CFFFF06141E3264140196010101010101010101000000000000000A07FF00006407FF0000640600100000010000
		MASTER IP:	010.000.001.033
		MASTER MAC ADDRESS:	F4:6D:04:EB:35:30
		FAULT:	0
		MESH GOOD PACKETS:	270
		MESH BAD PACKETS:	0
		ETHERNET SEND PACK:	270
		PACKETS IN QUEUE:	0
		PANEL SOFT VERSION:	GATEWAY v01.05-MU
		SERIAL NUMBER:	1001

In order to set up the master IP, of the PC that runs the GR-7600 PC Software enter "**TECHNICIAN MENU**" from the left tab, enter technician code (default: 1000) and then enter "**MASTER IP**" menu. Enter the static IP of the PC (3 digit numbers, fill with zeros where needed) Enter the MAC address of the PC's Ethernet adaptor (see details in Local Area Network connection status, Physical address line).

MASTER IP

SAVE

IP: 010 000 001 033

MAC F4 6D 04 EB 35 30

TECHNICIAN MENU

Press "**SAVE**" to save configurations to the Gateway. The Gateway will now send and receive all the data regarding the wireless emergency illumination network, to/from this IP.

Via "**CHANGE TECH CODE**" option you can change the default technician password from 1000 to another 4 digit number, in order to block access from unwanted sources.

Always enter a 4 digit number. Changing the tech code is an action that should be done responsibly, as there is no way to restore the default tech code without losing any saved other configurations.