



GR-900/30L/SC Waterproof Self Testing Maintained Emergency Luminaire



TECHNICAL CHARACTERISTICS (for LED module specifications see page 4)

OPERATION VOLTAGE	220-240V AC/50-60Hz
SUPPLY CURRENT	25mA
U-OUT	23V
Prated	2W
Irated	100mA
MAXIMUM POWER CONSUMPTION	6W / 6.5VA /PF: 0.92
INSULATION BETWEEN SUPPLY & CAPACITORS PACK CIRCUIT	Basic insulation
BACK UP SOURCE	Super Capacitors pack A-900/SC
CAPACITOR PROTECTION	From overcharge / the control gear will recharge the capacitors pack normally after the test of 22.3 (IEC61347-2-7:2011, §22.3).
MIN. MAX. CHARGE VOLTAGE	0 - 7.8V
MIN. MAX. DISCHARGE VOLTAGE	2.5 - 7.8V
MIN. MAX. CHARGE CURRENT	0 - 260mA
MIN. MAX. DISCHARGE CURRENT	90 - 290mA
INDICATIONS - CONTROLS	CHARGE, LAMP FAULT, BAT FAULT, TEST button
CHARGING TIME	6h
MINIMUM AUTONOMOUS DURATION	60 min
ILLUMINATION SOURCE	White LEDs
LIGHT SOURCE INTENSITY	250lm (230V AC) / 90lm (emergency)
DEGREES OF COVER PROTECTION	IP65
PRODUCED IN ACCORDANCE WITH	EN 60598-1, EN 60598-2-22, EN 55015, EN 61547, EN 61000-3-2, EN 61000-3-3
OPERATION TEMPERATURE RANGE	-40 to 65 °C
RELATIVE HUMIDITY	Up to 95%
RATED MAXIMUM OPERATING TEMPERATURE OF WINDINGS	t _w : 130 °C
CONSTRUCTION MATERIAL	ABS/PC, PC
EXTERNAL DIMENSIONS (L x W x H)	363 x 145 x 73 mm
TYPICAL WEIGHT	1012gr.
GUARANTEE	10 years
CONTROL GEAR WITH AUTOMATIC TEST FUNCTION	EL-T
Controlgear is suitable for LED module only.	
The controlgear has mains-connected windings of transformer.	

Thank you for your trust in our products Olympia Electronics - European manufacturer

GENERAL

This luminaire is used in places where emergency luminaires are needed. Each luminaire must be permanently connected to mains power supply. In normal operation the led strip lights and the capacitors pack is charging. In case of a mains power supply failure the luminaire will light the led strip automatically in emergency mode. When the mains power supply is restored the device turns to normal operation.

INSTALLATION

To install the luminaire follow the installation instructions on page 4.

Capacitors pack charging

The capacitors pack charging is completely and accurately controlled. In this case, is achieved the perfect capacitors pack maintenance, as well as the elongation of its duration. When the capacitor has completely charged, it charges with a maintenance current.

Capacitors pack Cut-off

The luminaire enters in this operation when the mains power supply fails and capacitors pack has lost its energy. During this operation the luminaire enters the idle state and the capacitors pack's consumption is negligible.

Manual Test

The manual test can be conducted only if the main power supply and the capacitors pack is connected. By pressing the TEST/RESET button briefly (page 3) an emergency operation test is initiated. During this test period all indication LEDs are OFF and the whole emergency circuit is monitored.

Automatic Operational Test

This test includes all the operations that provide the manual test and is conducted automatically every 15 days. In order to be performed, the main power supply and the capacitors pack should be connected.

Manual Autonomy Test

If the Test button is pressed for a period between 5 to 10 seconds (with the capacitors pack fully charged), the illumination sign will enter in counting autonomy condition. *If the capacitors pack is not fully charged this command is ignored.*

The BAT FAULT LED blinks during the measurement, indicating this process to the user. This measurement duration is equal with the nominal autonomous duration of the luminaire and at the end of the process, if the measured duration is equal to the nominal autonomous duration, the BAT FAULT LED is turned OFF, in the other hand stays continuously ON. If there is a failure in autonomy test, the capacitors should be changed.

Automatic Autonomy Test

The Automatic Autonomy Test includes all the features provided by Manual Autonomy Test. This test is conducted automatically every six months. In order to be performed, the main power supply and the capacitors pack should be connected and fully charged. If the capacitors pack is not fully charged, the test is postponed until it becomes fully charged. If there is a failure in autonomy test, the capacitors should be changed.

Back Up Operation

The capacitors pack's autonomous duration during emergency mode is at least the one that is stated in the list of the technical characteristics. During emergency mode, a LED strip test is also performed.

Resetting Errors

Push the TEST/RESET button (page 3) for >10 seconds, to delete all the indicated LED errors . Then the illumination sign enters regular

operation mode.

Test switch

Pressing the test switch less than 5 seconds will initiate a light source test (last for 3 secs). Pressing the test switch between 5 to 10 seconds will initiate a manual capacitors pack duration test. This test will not be started if the capacitors pack is not fully charged (i.e. If the green LED is flashing). If the test switch is pressed for more than 10 seconds, the illumination sign will be reset (delete all errors).

ATTENTION!!!

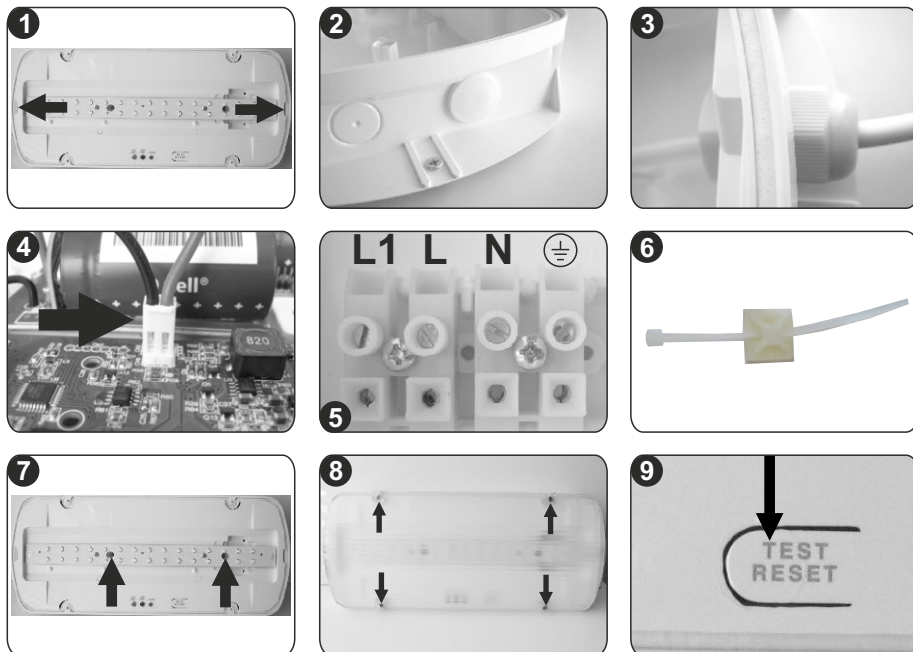
1. Operations for installation, maintenance or testing must be done by authorized personnel only.
2. The luminaire must be connected to the mains power supply thru a fuse dependent by the total amount of the line's power load.
3. In case of capacitors pack or lamp replacement, these must be replaced by parts of the same type, by the manufacturer or by a competent person.
4. In case of inactive use for a period greater than 2 months, disconnect the capacitors pack by pulling out the connector when is fully charged.
5. **It is not allowed to discard capacitors pack into common trash bins, they must be discarded only in recycling points. Do not incinerate.**



Status of LEDs

LEDs	Description
YELLOW <input type="radio"/>	
RED <input type="radio"/>	
GREEN <input checked="" type="radio"/>	Normal
<input type="radio"/>	<input type="radio"/> <input checked="" type="radio"/> Charging
<input type="radio"/>	<input type="radio"/> <input type="radio"/> Charger's fault, capacitors pack not connected or mains off
<input checked="" type="radio"/>	<input type="radio"/> <input type="radio"/> Capacitors pack's duration test (auto or manual)
<input checked="" type="radio"/>	<input type="radio"/> <input checked="" type="radio"/> Capacitors pack's fault
<input type="radio"/>	<input checked="" type="radio"/> <input checked="" type="radio"/> Light source test
<input type="radio"/>	<input checked="" type="radio"/> <input checked="" type="radio"/> Light source fault
<input checked="" type="radio"/>	<input checked="" type="radio"/> <input checked="" type="radio"/> Capacitors pack's fault and light source fault
<input checked="" type="radio"/>	<input type="radio"/> <input type="radio"/> Charger and capacitors pack's fault (or mains off and capacitor fault)
<input type="radio"/>	<input checked="" type="radio"/> <input type="radio"/> Charger and light source fault (or mains off and light source fault)
<input checked="" type="radio"/>	<input checked="" type="radio"/> <input type="radio"/> Charger, capacitors pack and light source fault (or mains off, capacitors pack and light source fault)
Led status explanation	
<input checked="" type="radio"/>	Continuous ON
<input type="radio"/>	Continuous OFF
<input checked="" type="radio"/>	Flashing at 1,2 Hz

INSTALLATION INSTRUCTIONS



BEWARE of electric shock after reflector removal. Plastic base could contain live parts if connected to mains supply.

For wall or ceiling installation

Step 1. Remove the diffuser. Place a flat blade screwdriver and pull up gently the reflector.

Step 2. Install the included plastic cover in to the unused hole and install the base plastic (with the included mounting screws and plugs).

Step 3. Always use in any case round mains cable, with external diameter of 6-9mm (H05RN-F type 2x1mm² or any other type, at least equal to it's mechanical and electrical properties). ATTENTION!! The cable must not be deformed in any way (This requirement is important to ensure the tightness isolation IP 65). Install the cable gland, pass the round cable through and tighten it all the way.

Step 4. Place the capacitors pack's connector to the corresponding connector on the P.C.B.

Step 5. Connect the mains cables to the respective terminal block (connect the ground wire). **N** for neutral, **L** for live wire and **L1** for the maintained operation. The **L1** wire can be connected to an external switch to control the maintained or non maintained operation of the luminaire. For permanent maintained operation use two wires to power the luminaire, **N** for neutral and **L** for live wire, and link the **L** and **L1**.

Step 6. Install the included tie (if needed) to fasten securely the power cables.

Step 7. Refit the reflector and fasten the two small screws (included).

Step 8. Finally place the diffuser by using the 4 screws (tightening torque 1.2Nm).

Step 9. Manual TEST or Resetting Errors

In order to test or reset the device you must carefully remove the diffuser by unfastening the 4 mounting screws. Then push the button as described in the according paragraphs on page 1 and 2.

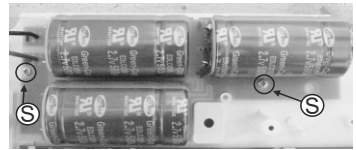
NOTE!!

After finishing the installation you must power the luminaire at least for 6 hours for capacitor charging to perform the nominal autonomy.

Super capacitors pack replacement (A-900/SC)

It can be done only by a competent person and after the mains interruption

1. Unfasten the 4 screws (step 8 page 3) and remove the diffuser. Unfasten the 2 retaining screws and remove the reflector (step 7 page 3).
2. Disconnect the connector and remove the old capacitors pack by unfastening the retaining screws (S) .
3. Connect the new capacitors pack (step 4 of the installation procedure) place it in the position of the old one and fasten the removed screws.
4. Refit the removed parts in previous steps and power the device.



Important notice for the installed luminaires in one area !!!

The installer must connect the capacitors pack's connector first and then should power the luminaire. The capacitors pack connection must have at least a time variation of 1.5 minute for each luminaire. With this variation, it is ensured that the non synchronized Automatic Autonomous Test for two or more luminaires installed in one area, is not conducted in the same day.

NOTE: LED= Light Emitting Diode

LABELING EXPLANATION:

X: Self contained

1: Maintained (*)

A: Including test device

G: Internally illuminated safety sign

60: 1 hour duration

(*) Maintained operation: The luminaire lights its illumination source, when it is powered by the mains power supply or not.

Non Maintained operation: The luminaire lights its illumination source, only in power supply's failure.

Note!! The installer should fill in, on the specification label, the letter **G** if the luminaire is used as a safety sign.

↓
X 1 A G 6 0

LED MODULE CHARACTERISTICS	GR-900/30L/SC
Manufacturer	Olympia Electronics S.A.
Model Number	1505153
Voltage Range	17.4-21.6V DC
Nominal Power	2W
Connections	Cable connection with non reversible connectors
Temperature (tc)	45 °C max. across the board



The light source contained in this luminaire shall only be replaced by the manufacturer, or his agent, or a similar qualified person.

NOTE! *The light source is non-user replaceable.*

WARRANTY

Olympia Electronics guarantees the quality, condition and operation of the goods. The period of warranty is specified in the official catalogue of Olympia Electronics and also in the technical leaflet, which accompanies each product. This warranty ceases to exist if the buyer does not follow the technical instructions included in official documents given by Olympia Electronics or if the buyer modifies the goods provided or has any repairs or re-setting done by a third party, unless Olympia Electronics has fully agreed to them in writing. Products that have been damaged can be returned to the premises of our company for repair or replacement, as long as the warranty period is valid.

Olympia Electronics reserves the right to repair or to replace the returned goods and to or not charge the buyer depending on the reason of deflection. Olympia Electronics reserves the right to charge or not the buyer the transportation cost.

HEAD OFFICE

72nd km. O.N.R. Thessaloniki-Katerini
P.C. 60300 P.O. Box 06 Eginio Pierias Greece

www.olympia-electronics.gr

info@olympia-electronics.gr