

“ WEATHER LIGHT ” SERIES FOR WATERPROOF CBS LUMINAIRES WITH LEDs



**TECHNICAL CHARACTERISTICS** (for LED MODULE Specifications see below)

	GR-926/15L	GR-926/30L
OPERATION VOLTAGE	110-250V DC-AC/50-60Hz	
MAXIMUM POWER CONSUMPTION	1.75W / 2VA	2.9W / 3.2VA
ILLUMINATION SOURCE	15 white LED	30 white LED
ILLUMINATION	125lm	250lm
DEGREES OF COVER PROTECTION	IP65	
PRODUCED IN ACCORDANCE WITH	EN 60598-1, EN 60598-2-22, EN 55015, EN 61547, EN 61000-3-2, EN 61000-3-3	
OPERATION TEMPERATURE RANGE	-30 to 55 °C	
RELATIVE HUMIDITY	Up to 95%	
CONSTRUCTION MATERIALS	ABS/PC, PC	
EXTERNAL DIMENSIONS	363 x 145 x 73 mm	
TYPICAL WEIGHT	700gr.	
GUARANTEE	3 years	

Thank you for your trust in our products  
Olympia Electronics - European manufacturer

**GENERAL**

These luminaires are used in places where emergency luminaires are needed. Each luminaire must be permanently connected to mains power supply.

2. The device must be connected to the mains power supply through a fuse dependent by the total amount of the line's power load.

**INSTALLATION**

To install the luminaire follow the installation instructions on page 2.

**ATTENTION!!!**

1. Operations for installation, maintenance or testing must be done by authorized personnel only.

**NOTE:** LED= Light Emitting Diode

**LABELING EXPLANATION:**

**Z:** Central Supply

**1:** Maintained

**G:** Internally illuminated safety sign

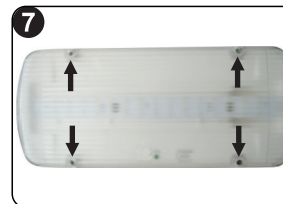
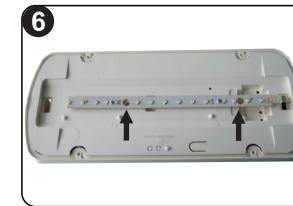
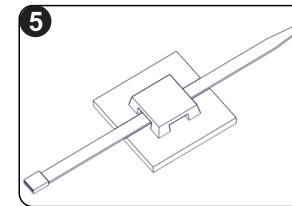
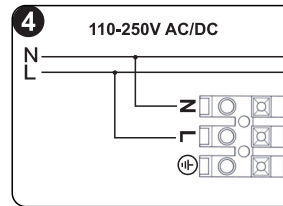
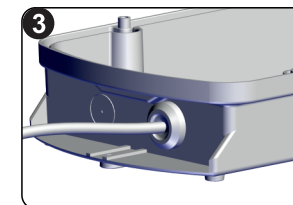
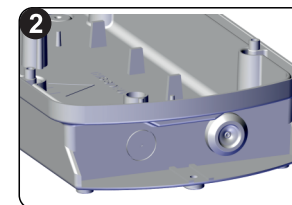
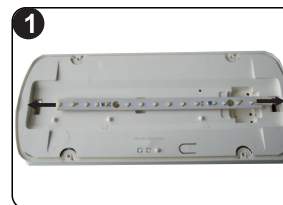
**Note!!** The installer should fill in, on the specification label, the letter **G** if the luminaire is used as a safety sign.



**LED MODULE CHARACTERISTICS**

	GR-926/15L	GR-926/30L
Manufacturer	Olympia Electronics S.A.	
Model Number	1605163/15L	2101163
Voltage Range	8.7-10.8VDC	8.4-9.9VDC
Nominal Power	0.975W	1.8W
Connections	Cable connection between main pcb and led module	
Temperature (tc)	40 °C max. across the board	45 °C max. across the board

**INSTALLATION INSTRUCTIONS**



**Step 1.** Remove the diffuser. Place a flat blade screwdriver and pull the reflector gently (with opposite orientation in relation to the plastic base).

**Step 2.** Install the included rubber gasket into the unused hole. Install the plastic base with the included mounting screws and plugs.

**Step 3.** Install the second rubber gasket into the hole. Use a small flat bladed screwdriver to open a hole in the rubber gasket and pass through the mains cable. **Always use in any case**

**round mains cable, with a diameter of 6-9mm (H05RN-F type 2x1mm<sup>2</sup> or any other type, at least equal to it's mechanical and electrical properties).**

**ATTENTION!! The cable and the rubber gaskets must not be deformed in any way. (This requirement is important to ensure the tightness isolation IP65).**

**Step 4.** Connect the mains as shown on figure (connect the ground wire if required).

**Step 5.** Install the included tie (if needed) to fasten securely the power cables.

**Step 6.** Refit the reflector and fasten the two small screws (included).

**Step 7.** Finally place the diffuser by using the 4 included screws (tightening torque 1.2Nm).



The light source contained in this luminaire shall only be replaced by the manufacturer, or his agent, or a similar qualified person.

**NOTE!** The light source is non-user replaceable.

**WARRANTY**

Olympia Electronics guarantees the quality, condition and operation of the goods. The period of warranty is specified in the official catalogue of Olympia Electronics and also in the technical leaflet, which accompanies each product. This warranty ceases to exist if the buyer does not follow the technical instructions included in official documents given by Olympia Electronics or if the buyer modifies the goods provided or has any repairs or re-setting done by a third party, unless Olympia Electronics has fully agreed to them in writing. Products that have been damaged can be returned to the premises of our company for repair or replacement, as long as the warranty period is valid.

Olympia Electronics reserves the right to repair or to replace the returned goods and to or not charge the buyer depending on the reason of deflection. Olympia Electronics reserves the right to charge or not the buyer the transportation cost.

**HEAD OFFICE**

72nd km. O.N.R. Thessaloniki-Katerini  
P.C. 60300 P.O. Box 06 Eginio Pierias Greece  
[www.olympia-electronics.com](http://www.olympia-electronics.com)  
[info@olympia-electronics.com](mailto:info@olympia-electronics.com)

“ WEATHER LIGHT ” SERIES FOR WATERPROOF CBS LUMINAIRES WITH LEDs



**TECHNICAL CHARACTERISTICS** (for LED MODULE Specifications see below)

	GR-926/15L	GR-926/30L
OPERATION VOLTAGE	110-250V DC-AC/50-60Hz	
MAXIMUM POWER CONSUMPTION	1.75W / 2VA	2.9W / 3.2VA
ILLUMINATION SOURCE	15 white LED	30 white LED
ILLUMINATION	125lm	250lm
DEGREES OF COVER PROTECTION	IP65	
PRODUCED IN ACCORDANCE WITH	EN 60598-1, EN 60598-2-22, EN 55015, EN 61547, EN 61000-3-2, EN 61000-3-3	
OPERATION TEMPERATURE RANGE	-30 to 55 °C	
RELATIVE HUMIDITY	Up to 95%	
CONSTRUCTION MATERIALS	ABS/PC, PC	
EXTERNAL DIMENSIONS	363 x 145 x 73 mm	
TYPICAL WEIGHT	700gr.	
GUARANTEE	3 years	

**Thank you for your trust in our products**  
**Olympia Electronics - European manufacturer**

**GENERAL**

These luminaires are used in places where emergency luminaires are needed. Each luminaire must be permanently connected to mains power supply.

2. The device must be connected to the mains power supply through a fuse dependent by the total amount of the line's power load.

**INSTALLATION**

To install the luminaire follow the installation instructions on page 2.

**ATTENTION!!!**

1. Operations for installation, maintenance or testing must be done by authorized personnel only.

**NOTE:** LED= Light Emitting Diode

**LABELING EXPLANATION:**

**Z:** Central Supply

**1:** Maintained

**G:** Internally illuminated safety sign

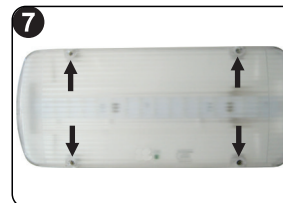
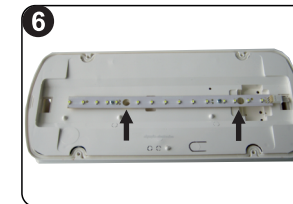
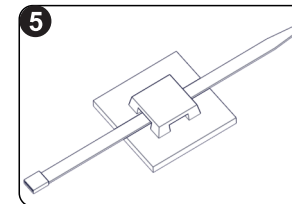
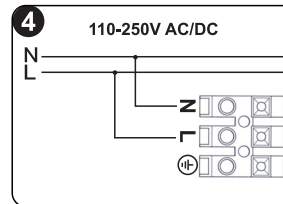
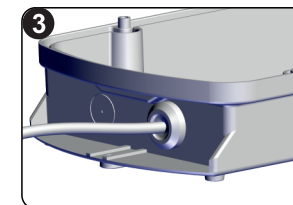
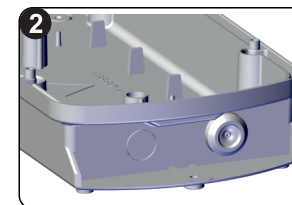
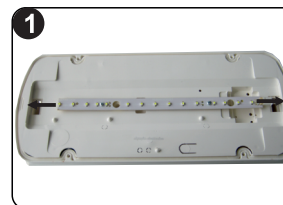
**Note!!** The installer should fill in, on the specification label, the letter **G** if the luminaire is used as a safety sign.



**LED MODULE CHARACTERISTICS**

	GR-926/15L	GR-926/30L
Manufacturer	Olympia Electronics S.A.	
Model Number	1605163/15L	2101163
Voltage Range	8.7-10.8VDC	8.4-9.9VDC
Nominal Power	0.975W	1.8W
Connections	Cable connection between main pcb and led module	
Temperature (tc)	40 °C max. across the board	45 °C max. across the board

**INSTALLATION INSTRUCTIONS**



**Step 1.** Remove the diffuser. Place a flat blade screwdriver and pull the reflector gently (with opposite orientation in relation to the plastic base).

**Step 2.** Install the included rubber gasket into the unused hole. Install the plastic base with the included mounting screws and plugs.

**Step 3.** Install the second rubber gasket into the hole. Use a small flat bladed screwdriver to open a hole in the rubber gasket and pass through the mains cable. **Always use in any case**

**round mains cable, with a diameter of 6-9mm (H05RN-F type 2x1mm<sup>2</sup> or any other type, at least equal to it's mechanical and electrical properties).**

**ATTENTION!! The cable and the rubber gaskets must not be deformed in any way. (This requirement is important to ensure the tightness isolation IP65).**

**Step 4.** Connect the mains as shown on figure (connect the ground wire if required).

**Step 5.** Install the included tie (if needed) to fasten securely the power cables.

**Step 6.** Refit the reflector and fasten the two small screws (included).

**Step 7.** Finally place the diffuser by using the 4 included screws (tightening torque 1.2Nm).



The light source contained in this luminaire shall only be replaced by the manufacturer, or his agent, or a similar qualified person.

**NOTE!** The light source is non-user replaceable.

**WARRANTY**

Olympia Electronics guarantees the quality, condition and operation of the goods. The period of warranty is specified in the official catalogue of Olympia Electronics and also in the technical leaflet, which accompanies each product. This warranty ceases to exist if the buyer does not follow the technical instructions included in official documents given by Olympia Electronics or if the buyer modifies the goods provided or has any repairs or re-setting done by a third party, unless Olympia Electronics has fully agreed to them in writing. Products that have been damaged can be returned to the premises of our company for repair or replacement, as long as the warranty period is valid.

Olympia Electronics reserves the right to repair or to replace the returned goods and to or not charge the buyer depending on the reason of deflection. Olympia Electronics reserves the right to charge or not the buyer the transportation cost.

**HEAD OFFICE**

72nd km. O.N.R. Thessaloniki-Katerini  
P.C. 60300 P.O. Box 06 Eginio Pierias Greece

[www.olympia-electronics.com](http://www.olympia-electronics.com)

[info@olympia-electronics.com](mailto:info@olympia-electronics.com)