

## EMERGENCY LIGHTING 3D LIGHT

The 3D Light safety luminaire has four illuminated escape route signs, making it suitable for large and wide areas such as airports or shopping malls. The luminaire is perceptible from long distances due to the high luminance of the white contrasting color ( $> 500\text{cd} / \text{m}^2$ ) of the escape route pictograms.

European  
manufacturer



[www.olympia-electronics.com](http://www.olympia-electronics.com)



est. 1979



*for a safer world!*

# EMERGENCY LIGHTING 3D LIGHT

The 3D Light is suitable to indicate the escape route of large installations. It can easily be ceiling mounted, as well as suspended with the purchase of additional components. The luminaire is self-testing with LED indicators that reduce maintenance time/cost and enable installation at high ceilings.

Lamps  
LED

Construction materials  
Polycarbonate, aluminum body, plexiglass

Installation  
Designed for surface mounting on a ceiling, as well as hanging mounting with chain.

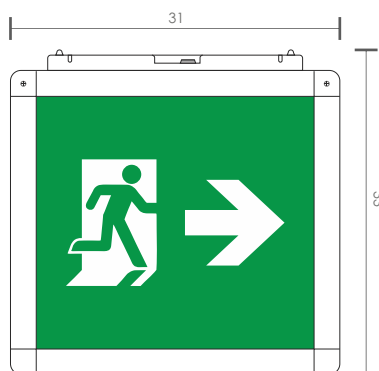
Autonomy options  
1, 3 or 8 hours duration autonomy (option during installation)

Automatic capacity test  
All self-testing luminaires are equipped with a control system that automatically performs monitoring procedures according to EN 62034.

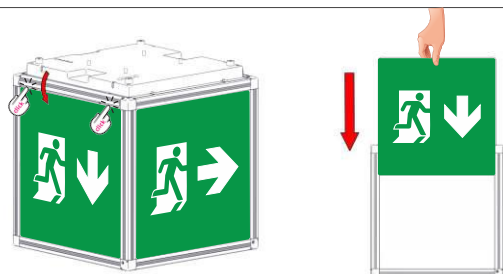
Placements  
Malls, airports, ports, large super markets, event halls, warehouses.

Dimensions in cm

Product	Length	Width	Height
3D LIGHT	31cm	31cm	33cm



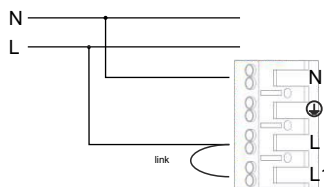
Easy installation of the pictogram



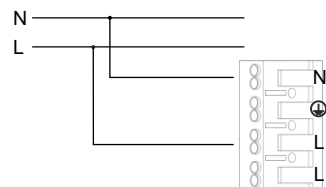
Power supply

N for neutral, L for live wire and ⊕ for ground.

Maintained

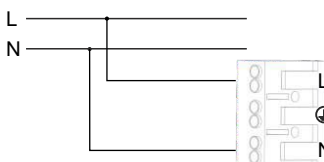


Non maintained



CBS power supply

N for neutral, L for live wire and ⊕ for ground.





<b>Description</b>	GR-415/1PL Self-testing, maintained / non maintained, emergency luminaire sign, IP40
<b>Code</b>	923415003
<b>Consumption</b>	6.4W / 6.6VA
<b>Light source power (mains/emergency)</b>	mains 370m emergency 1h 370lm / 3h 270lm / 8h 100lm
<b>Autonomy</b>	1h / 3h / 8h hours
<b>Battery (Ni-MH)</b>	4.8V / 2Ah

230V CBS	<b>Description</b>	GR-424/1PL Emergency luminaire sign, IP40	GR-424/1PL/WP Emergency luminaire sign, waterproof IP65
	<b>Code</b>	923424003	923424004
	<b>Consumption</b>	4.4 W / 4.6 VA	4.4 W / 4.6 VA
	<b>Light source power</b>	500lm	500lm
	<b>Autonomy</b>	-	-
	<b>Battery (Ni-MH)</b>	-	-

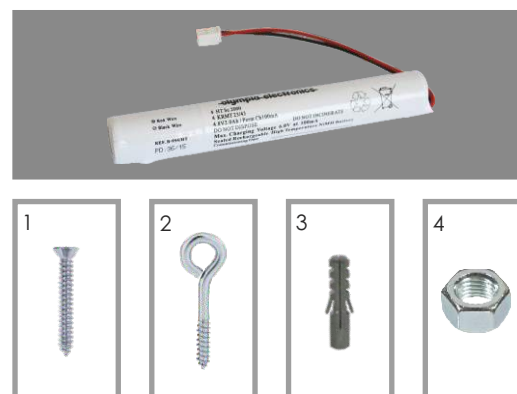
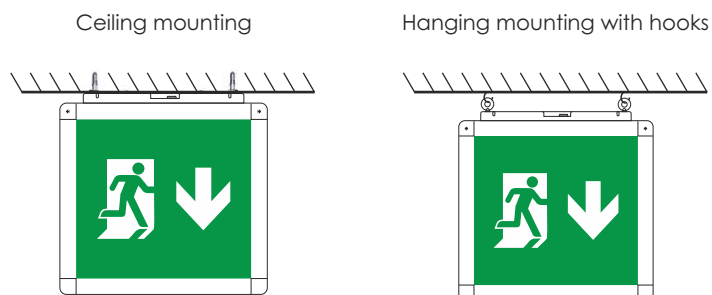
#### Spare part - Battery

Code	Description
601134820	B-954/HT NiMh Battery 4.8V / 2Ah

#### Accessories included in the package

Code	Description	Image
503000638	Sheet metal screws	1
506002050	Screw eye, metal hook	2
000010507	Wall Plugs	3
502000640	M5 galvanized nuts	4

#### Installation methods with accessories contained in the package







# 3D LIGHT



[www.olympia-electronics.com](http://www.olympia-electronics.com)

European  
manufacturer



The company is certified by

**SWISS**  
Objectively True

ISO 14001, OHSAS 18001, ISO 90001

F-001-048