



phos^{4.0}
software

Wireless emergency lighting monitoring

Phos 4.0 is the latest wireless security lighting system by Olympia Electronics. Phos 4.0 system is based on encrypted wireless communications between devices, offering full monitoring of all connected luminaires with strong security from unwanted access.

It is designed to cover small, medium and very large installations. This feature is due to the large number of devices that can be interconnected and managed by the central unit.



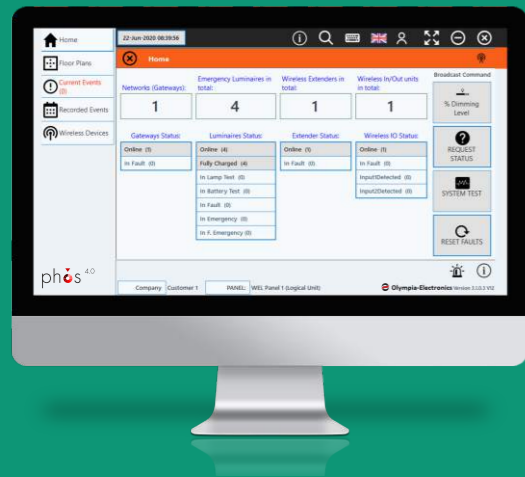
www.olympia-electronics.com



for a safer world!



Wireless emergency lighting monitoring



The Phos 4.0 wireless emergency lighting system offers complete monitoring of all connected wireless devices, collecting status information and issuing testing commands, without affecting the operation of the connected devices. Also, the system offers advanced connectivity options that enable it to connect to BMS systems via Modbus TCP.

The system preserves the ease of installation offered by self-contained luminaires, avoiding the need for specialized installation crews, as each luminaire only requires a local power supply. Furthermore, each wireless device operates as a separate node, receiving and transmitting the signal to neighboring devices, thus enabling the network to self-heal and bypass any malfunctioning nodes.

The Phos 4.0 wireless system:

- offers complete monitoring options of all connected devices without interfering with the installation and operation of self-contained luminaires.
- is resistant to network failures, as each wireless device is operating as a separate node.
- can connect to modern BMS systems, offering a complete overview of all installation luminaires.

Tablet or desktop

You can choose which device to check from!



TABLET GR-7610/V2i-OLEG

The GR-7610/V2 i-OLEG is the standalone control panel version of the wireless emergency lighting system. The i-OLEG is equipped with a 7" control touch screen and the backup battery offers 1h autonomy. The GR-7610/V2 comes with the Standard version of "Phos4.0" software pre-installed and can support up to 2 USB Gateways (GR-7607/V2 or GR-7605/V2).

- ✓ Status indication LEDs (Power, Battery, Fault)
- ✓ 1xEthernet (RJ45), 2xUSB (1xUSB2.0, 1xUSB3.0), 1xHDMI
- ✓ WiFi (802.11 b/g/n)
- ✓ System buzzer (alert on system fault)
- ✓ Dimensions 220x145x66mm

Assistive devices



TABLET GR-7620/V2/Kit

GR-7620/V2/Kit is a control panel for wireless emergency luminaires suitable for industrial installations, with a 10.1" touch screen, rugged design and a battery for 4 hours of autonomy duration in case of power failure. GR-7620/V2/Kit has the Phos 4.0 standard version pre-installed.

- ✓ Connectivity with Ethernet / wifi, gateway, USB gateway
- ✓ Tablet IP67 / Metal case IP30
- ✓ Internal power supply
- ✓ Gateway mounting positions
- ✓ Housing dimensions 373x313x45mm
- ✓ Waterproof, Shockproof, Drop resistance, Anti-Dust
- ✓ Screen 10.1 inch, IPS, Capacitive Touch Screen
- ✓ Resolution 1920*1200
- ✓ Battery 12000mAh
- ✓ Weight 1080g
- ✓ 1 x USB 3.0 type A
- ✓ 2 x USB 2.0 type A
- ✓ 1 x HDMI port
- ✓ 1 x RJ45 LAN Port
- ✓ WiFi: 802.11 b/g/n

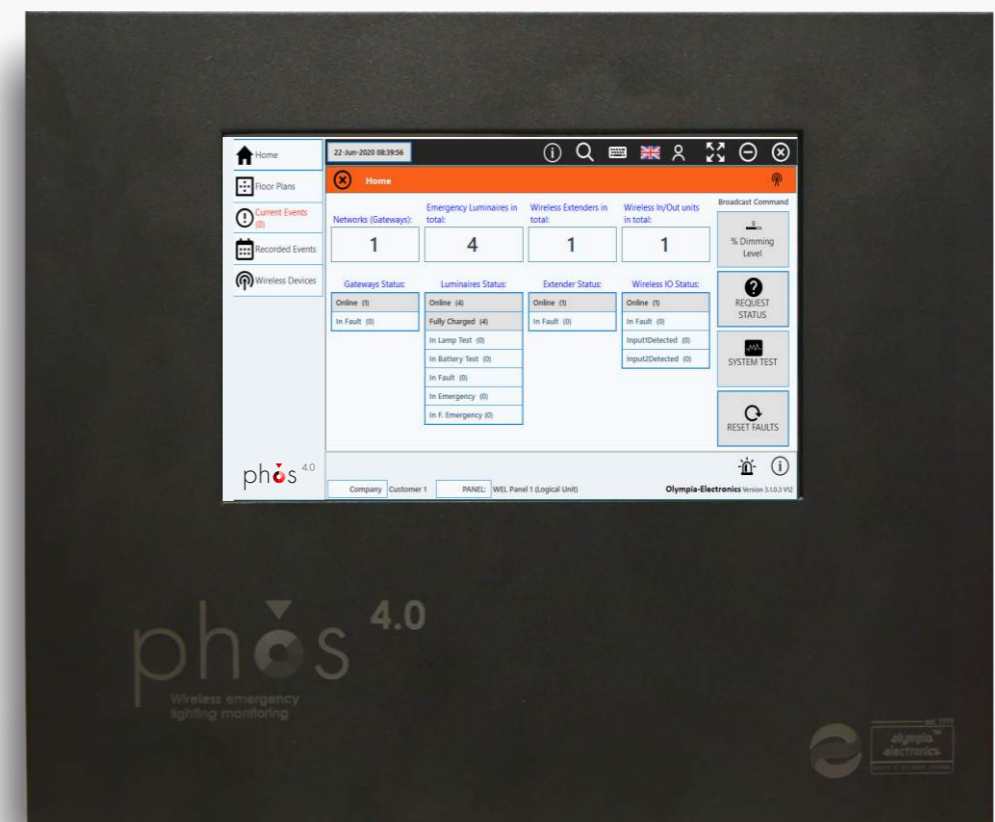
TABLET GR-7630/V2

GR-7630/V2 is a control panel for wireless emergency luminaires, with a 10.8" touch screen and a battery for 4 hours of autonomy duration in case of a power failure, is suitable for offices and receptions. GR-7630/V2 has the Phos 4.0 standard version pre-installed.

- ✓ Connectivity with Ethernet / wifi, gateway, usb gateway
- ✓ Screen 10.8 Inch IPS, Capacitive Touch Screen
- ✓ Dimensions 255x173.5x70mm
- ✓ Resolution 1920*1280
- ✓ Battery 10000mAh
- ✓ Weight 1020g
- ✓ 4xUSB 3.0 type A
- ✓ 1 x HDMI port
- ✓ 1 x RJ45 LAN Port
- ✓ WiFi: 802.11 b/g/n



YPSILON SERIES





Fast & easy installation.

Below there are indicative series of luminaires with wireless communication.

Olympus LED



Spot Light



Eco Light



Tetragono Light



www.olympia-electronics.com

European
manufacturer



The company is certified by

APPROVAL
SWISS
Objectively True
ISO 14001, ISO 45001, ISO 9001

0-001-051_update