

Test Report 3284597.

Olympia Electronics


N. Lakasas - P. Arvanitidis S.A.

Introduction.

This report has been prepared by Alexandre Gouveia and relates to the activity detailed below:

Job/Registration Details	Client Details
Job number: 3284597 Job type: Testing Samples Submitted Start Date: 01/12/2021 Test type: Audit Sample ID: 10193068 Registration: KM 640081 Scheme: BS EN 60598-2-22 Protocol: PP507 Scheme Mgr: Clayton Bell Quality system: ISO 9001:2015	Olympia Electronics N. Lakasas - P. Arvanitidis S.A. 72nd klm Old National Road Thessaloniki - Katerini Kolindros, Pieria 60300 Greece

The report has been approved for issue by Luke Masters Electrical Testing team Leader

Approved For Issue	
	Issue Date: 06/01/2022

Objectives.

Audit test for product certification, to the limited requirements of BS EN 60598-2-22:2014 used in conjunction with BS EN 60598-1:2015 in accordance with PP507.

Product Scope.

GR-1324/30L/24VDC Emergency luminaire

Report Summary.

A type sample of the above product has been tested and examined to the relevant requirements of the above specification and has been found not to comply with these requirements.

Test Samples.

Sample Id/ER Number	Description
10193068	GR-1324/30L/24VDC Emergency luminaire

Description of Test Samples.

Sample Description
The GR-1324/30L/24VDC, is class III, Led Emergency luminaire. Wall mounted or ceiling mounted, centrally supplied, maintained. The GR-1324/30L/24VDC is IP40, 30 white led 2W, indoor use only Ta -20°C to 50°C.

Test Equipment.

Number	Description	Cal Due Date
9004509	Hygrometer	09/04/22
9005164	Barometer	23/06/22
9006366	Callipers	10/06/22
9005170	Humidity chamber	NICS
9006654	thermohydrometer	14/07/22
9002011	Dielectric withstand tester	13/10/22
9006604	Stopwatch	18/03/23
CAS` 110-54-3	Hexane	NICS
9005305	Test finger	11/06/22
9001906	50mm test probe	NICS
9006728	Force gauge	16/07/22
9005099	DC power supply	NICS
9004803	Multimeter	06/10/22
9006604	Stopwatch	18/03/22

Supplementary Information

NICS = Not in Calibration System

9005170 Humidity chamber was verified using 9006654 thermohydrometer

9001906 50mm test probe was verified using 9006366 Callipers

9005099 DC power supply was verified using 9004803 Multimeter

Summary of Test Comments.

Clause	Comments
<p>3.2 (60598-1)</p>	<p>Clause 3.2.1 doesn't meet the requirements with regards to the height of letters which shall be 2mm. The letters height measured 1.5mm</p>
<p>General comments/Observation</p>	
<p>Critical components</p>	<p>LED model Full type test Everlight 67-21S/KK2C-H5757B5L12934Z2/2T/EU(AW) RG-0 CCT = 5700K 7.5~11 lm</p> <p>LED model Audit 30 LED E301546 0404153 Check by inspection has change</p> <p>Control gear Full type test Olympia CBS main and CBS main address 230V and 24V</p> <p>Control gear Audit 24V d.c 2302165 Check by inspection has change</p>

Glossary of Terms.

PASS: Complies. Tested by BSI engineers at BSI laboratories.

PASS1: Complies. Witnessed by BSI engineers in manufacturers laboratory.

PASS2: Complies. Tests carried out by third party lab; results accepted by BSI.

PASS*: Report resulted in uncertainty and states that Compliance is more probable than non-compliance.

FAIL: Non-compliance – Product does not meet the requirements of this clause.

FAIL*: Report resulted in uncertainty and states that Non-compliance is more probable than compliance.

N/A: Not applicable to design under consideration.

N/T: Not tested due to similarity to previously tested item; reference earlier test report.

Conditions of Issue.

This Test Report is issued subject to the conditions stated in current issue of 'BSI Terms of Service'. The results contained herein apply only to the sample(s) tested and to the specific tests carried out, as detailed in this Test Report. The issuing of this Test Report does not indicate any measure of Approval, Certification, Supervision, Control or Surveillance by BSI of any product. No extract, abridgement or abstraction from a Test Report may be published or used to advertise a product without the written consent of BSI, who reserve the absolute right to agree or reject all or any of the details of any items or publicity for which consent may be sought.

Should you wish to speak with BSI in relation to this report, please contact Customer Services on +44 (0)8450 80 9000.

BSI
Holywell Park
Ashby Road
Loughborough
Leicestershire
LE11 3AQ



Opinions and Interpretations expressed herein are outside the scope of our UKAS accreditation.

Unless otherwise stated, any results not obtained from testing in a BSI laboratory are outside the scope of our UKAS accreditation.

Supporting Data – Test Results.

Table A - BS EN 60598-2-22:2014 used in conjunction with BS EN 60598-1:2015.

Standard Clause Ref	Activity	Test Result/ Evidence/Comment/ NC Ref	Complies
22.5 (60598-2-22)	Classification of luminaires	Classified as per requirements as in section 2 Class III, IP40.	PASS
22.6 (60598-2-22)	Marking	All markings required are present.	PASS
22.13.7 (60598-2-22)	Endurance test	Central supply class III Luminaire no battery incorporated.	N/A
3.2 (60598-1)	Marking of luminaires	Please see page 5 summary of test comments.	FAIL
3.3 (60598-1)	Additional information	All additional requirements present on luminaire and instructions.	PASS
3.4 (60598-1)	Test of marking	Each label on test sample were lightly rubbed with a cloth soaked in water for 15 seconds and a cloth soaked in 95% n-hexane solution for another 15 seconds. Markings that are being tested: Rating label, warning label. Still legible: Yes Curling: No Easily removeable: No	PASS
4.10 (60598-1)	Double and reinforced insulation	Class III emergency luminaire, no double or reinforced insulation	N/A

Standard Clause Ref	Activity	Test Result/ Evidence/Comment/ NC Ref	Complies
7.2 (60598-1)	Provision for earthing	Class III NO Provision for earthing	N/A
8.2 (60598-1)	Protection against electric shock	<p>No access to live parts with standard test finger 10N of force was applied.</p> <p>No access to basic insulated parts from outside of the luminaire with 50 mm test probe 10N of force was applied.</p> <p>Test sample provided with a 30V d c voltage supply. 60 seconds after disconnection the voltage across supply terminals was measured.</p> <p>Limit = 50 V Measured voltage = 0.00 V a c/ 0.43 V d c.</p>	PASS
9.3.1 (60598-1)	Humidity test	<p>The sample it is placed in environmental chamber and maintained at 95% RH and 25°C for 48hours.</p> <p>After test, sample showed no sign of damage that could affect compliance with the standards.</p> <p>Insulation resistance and electric strength was performed immediately after humidity test.</p>	PASS

Standard Clause Ref	Activity	Test Result/ Evidence/Comment/ NC Ref	Complies
10.2 (60598-1)	Insulation resistance and electric strength	<p style="text-align: center;"><u>Insulation resistance</u></p> <p style="text-align: center;"><u>SELV</u></p> <p>After above, test voltage of 100 V d.c applied for 1 minute between:</p> <p>+ & - Metal foil on the mounting surface limit = 1MΩ Measured = > 10 GΩ</p> <p>+ & - the enclosure cover on foil limit = 1MΩ Measured = > 10 GΩ</p>	PASS
10.2 (60598-1)	Insulation resistance and electric strength	<p style="text-align: center;"><u>Electric Strength</u></p> <p style="text-align: center;"><u>SELV</u></p> <p>A test voltage of 500 V a.c 50 Hz was applied for 1 minute between:</p> <p>+ & - Metal foil on the mounting surface No flashover or breakdown</p> <p>+ & - the enclosure cover on foil No flashover or breakdown</p>	PASS
11.2 (60598-1)	Creepage distances and clearances	<p>No values are specified for working voltage below 25 V r.m.s and 60 V d.c</p> <p>Is a class III luminaire the working voltage is below 60 V d.c, rated voltage on luminaire is 15-30V d.c.</p> <p>There for creepage distance and clearance is no applicable.</p>	N/A

Critical components check.

Critical component	Type test 8439708/rev1	Audit	Changed?
LED Model	Everlight 67-21S/KK2C- H5757B5L12934Z2/2T/EU(AW) RG-0 CCT = 5700K 7.5~11 lm	30 LED E301546 0404153 Check by inspection	YES
Terminal block	Euroclamp MV25x-5,08-V 16 A 450 V 2.5 mm ² /14 AWG	Euroclamp MV25 16 A Check by inspection	NO
Control Gear	Olympia CBS main and CBS main address 230V and 24V	24V d.c 2302165 Check by inspection	YES

Supplementary information:

Full type test Everlight 67-21S/KK2C-H5757B5L12934Z2/2T/EU(AW) RG-0 CCT = 5700K 7.5~11 lm

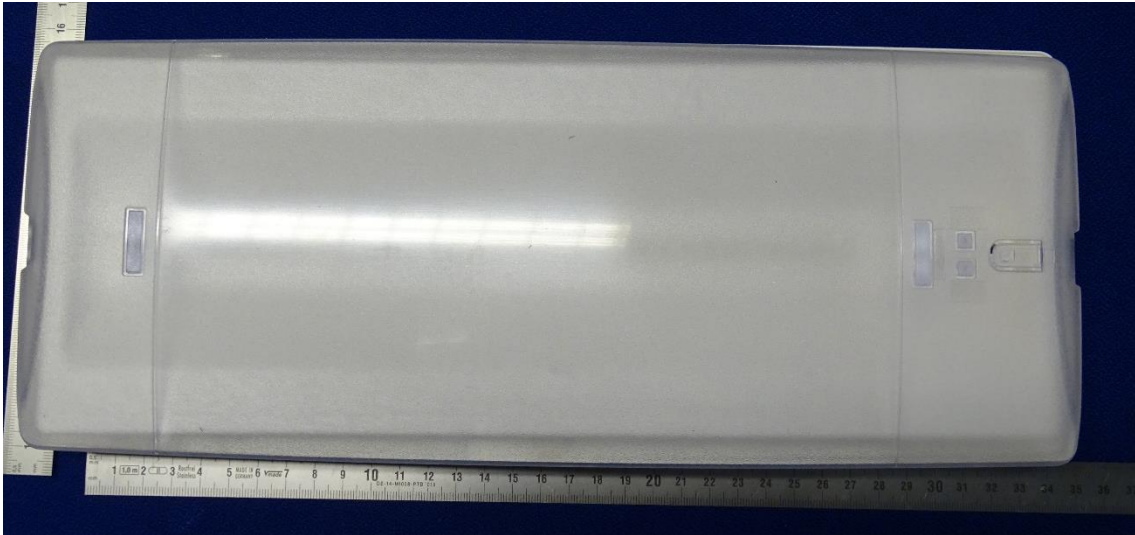
Audit 30 LED E301546 0404153 Check by inspection has change

Full type test Olympia CBS main and CBS main address 230V and 24V

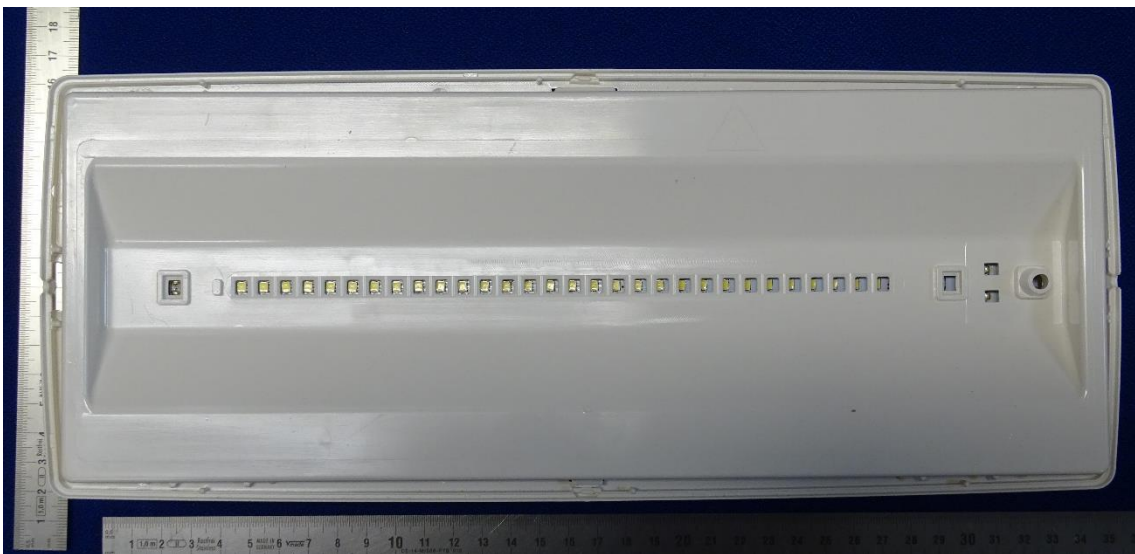
Audit 24V d.c 2302165 Check by inspection has change

Please see page 4 summary of test comments.

Photographs.



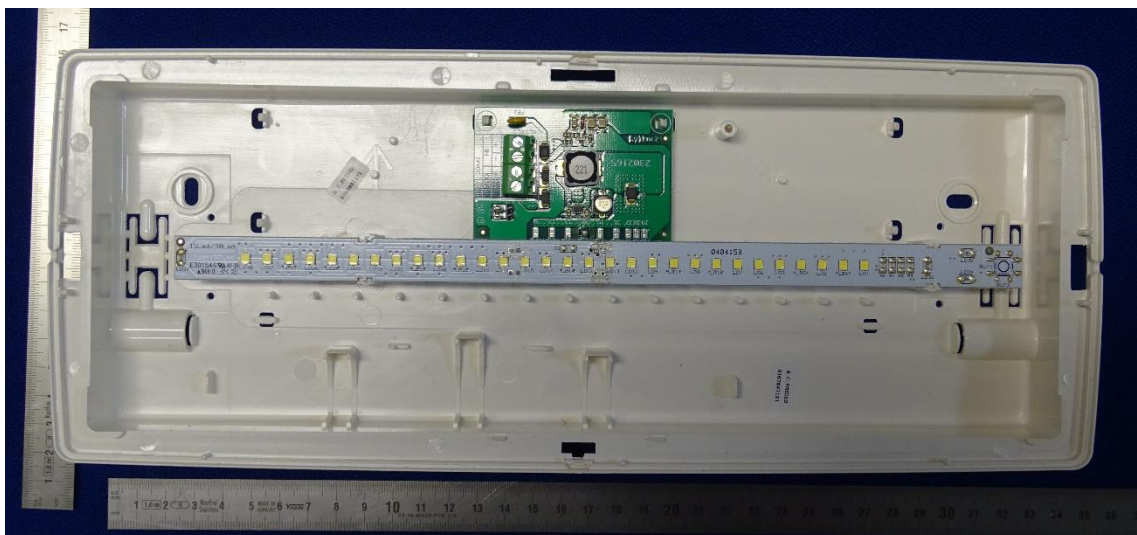
Main luminaire (front)



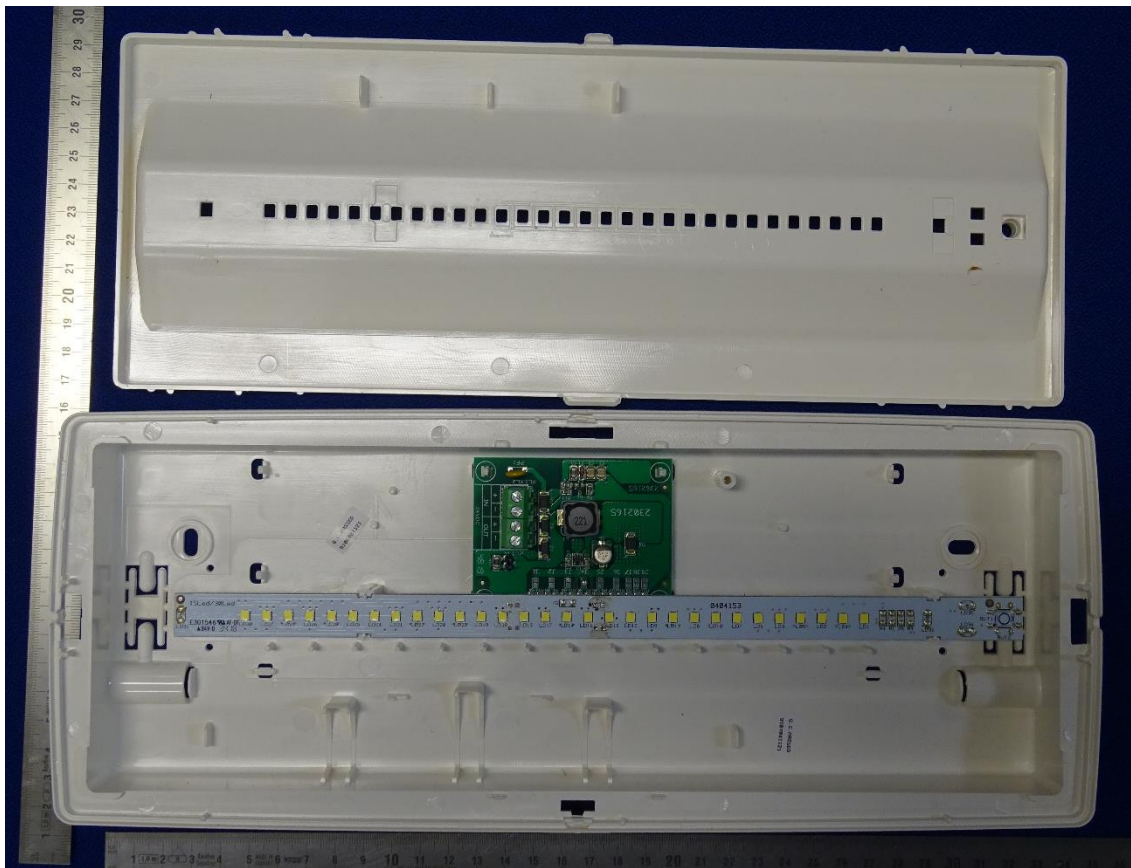
Interior of Luminaire



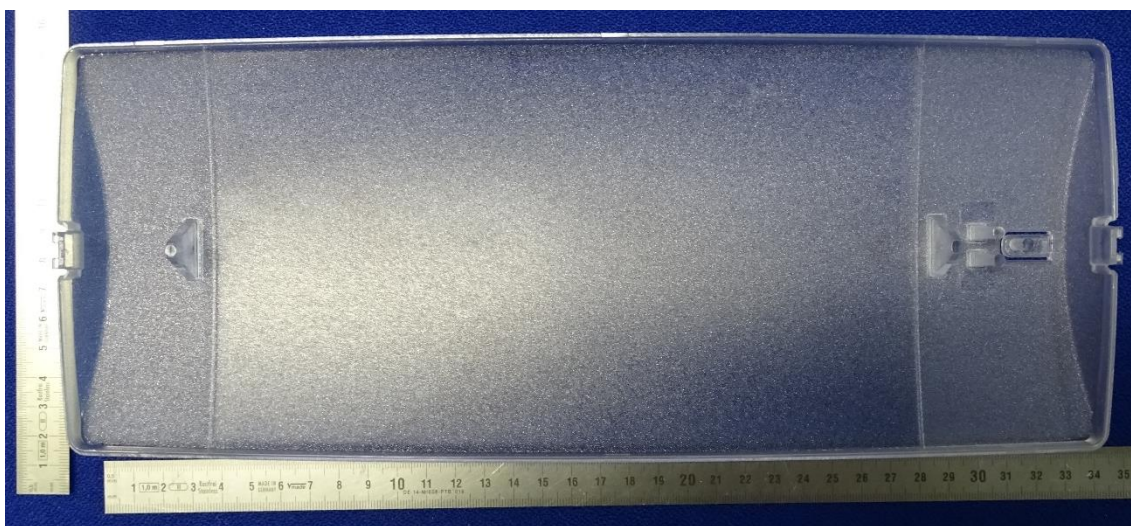
Interior led cover and diffuser



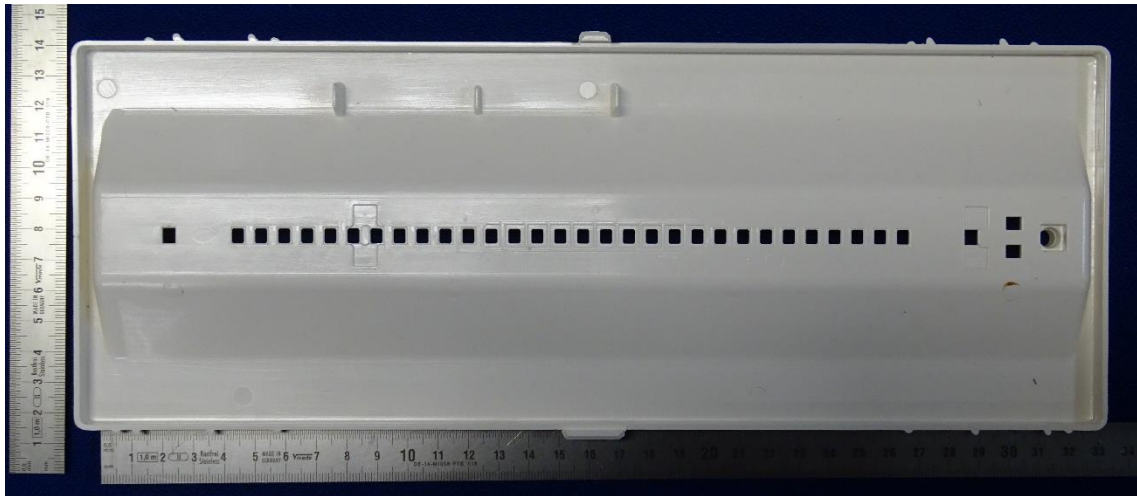
Internal components



Interior and Led cover



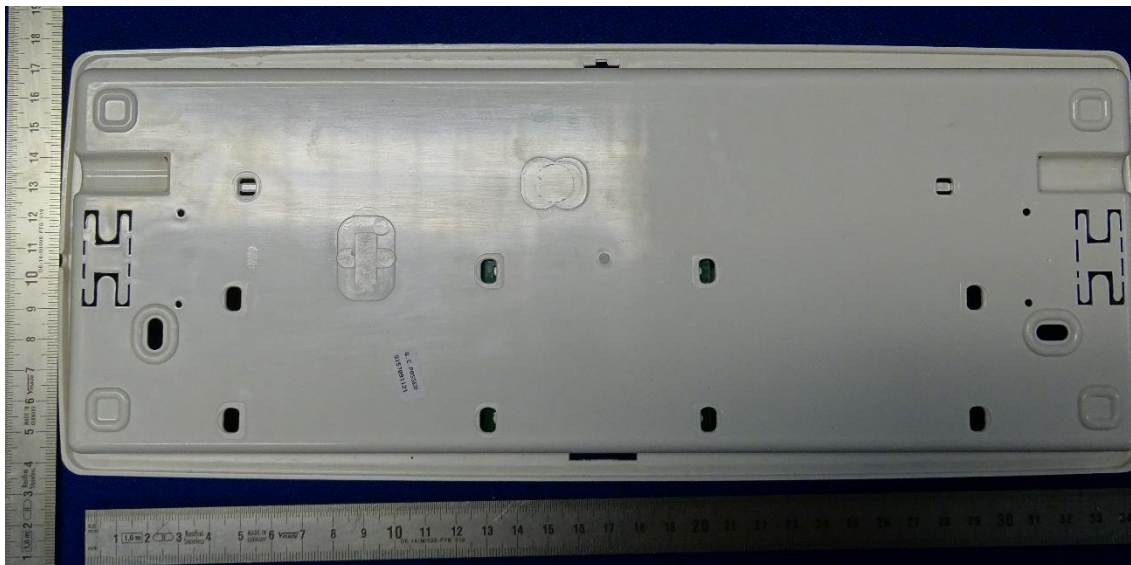
Diffuser



Led cover



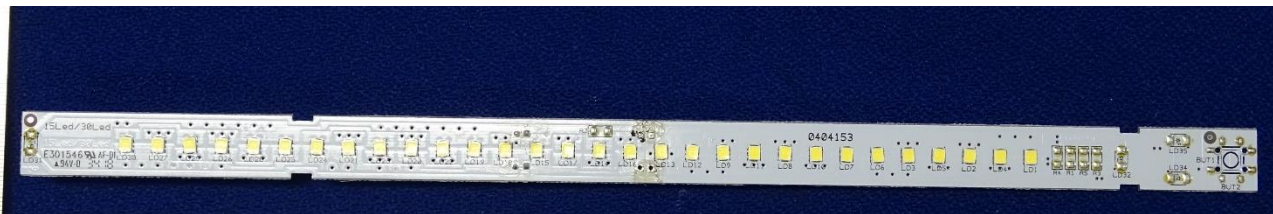
Warning label



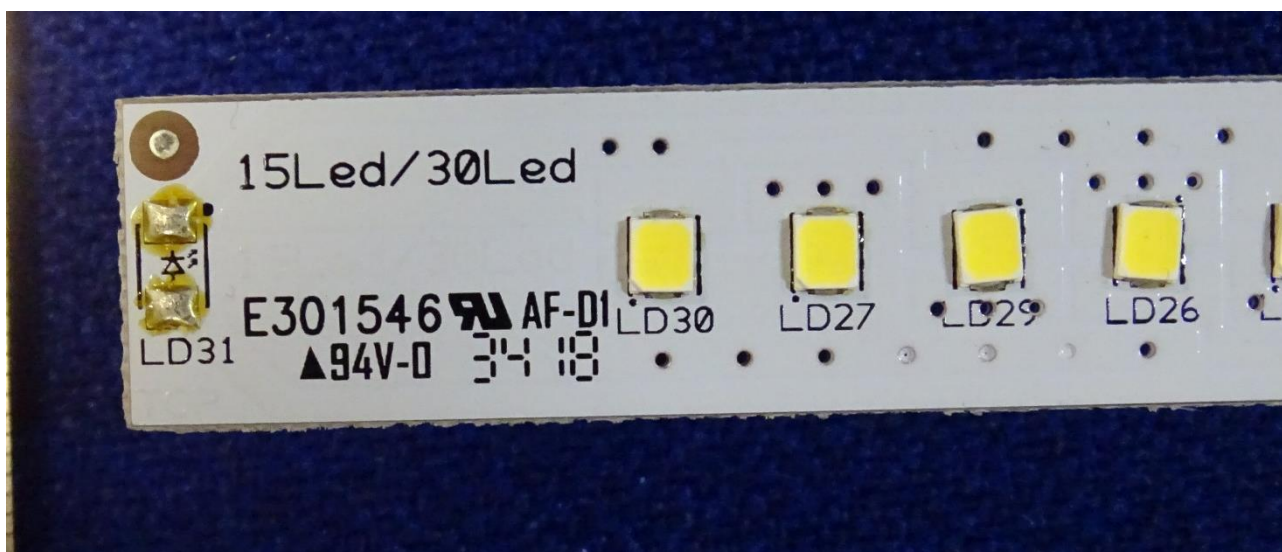
Mounting surface



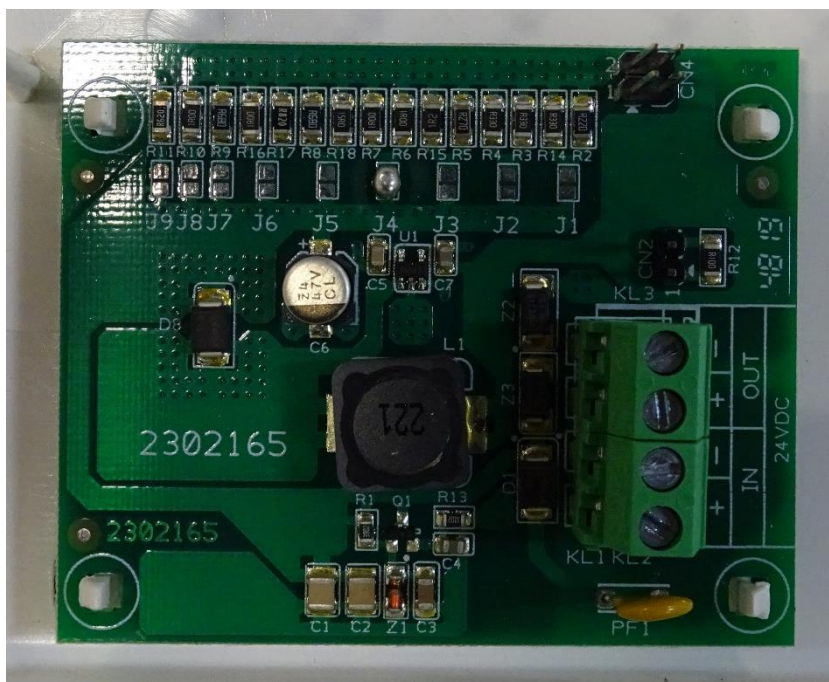
Main rating label



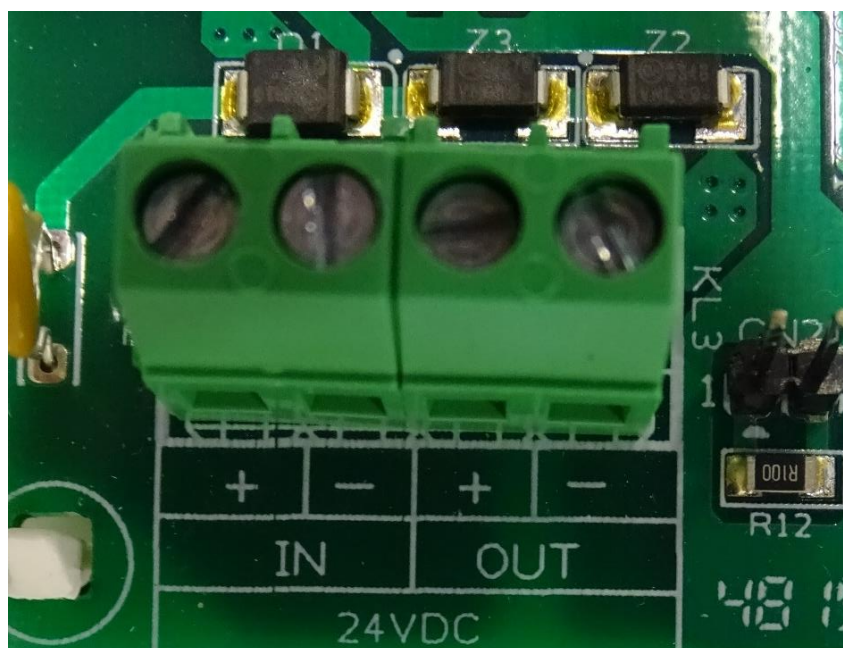
Led chips



Led label



Control gear pcb



Terminal block

End of Report