

ADDRESSABLE EMERGENCY LUMINAIRES FOR GR-8600 CBS PANEL



TECHNICAL CHARACTERISTICS

	GR-1926/15L/24V/ADR	GR-1926/30L/24V/ADR
OPERATION VOLTAGE	15-30V DC	
MAXIMUM POWER CONSUMPTION	1.5W	2.3W
ILLUMINATION SOURCE	15 White LED	30 White LED
ILLUMINATION	125lm	255lm
DEGREES OF COVER PROTECTION	IP65	
PRODUCED IN ACCORDANCE WITH	EN 60598-1, EN 60598-2-22, EN 55015, EN 61547	
OPERATION TEMPERATURE RANGE	-20 to 50 °C	
RELATIVE HUMIDITY	Up to 95%	
CONSTRUCTION MATERIALS	Bayblend FR3010, transparent polycarbonate	
EXTERNAL DIMENSIONS	313 x 118 x 66 mm	
TYPICAL WEIGHT	510gr.	
GUARANTEE	3 years	

Thank you for your trust in our products
Olympia Electronics - European manufacturer

GENERAL

- Operations for installation, maintenance or testing must be done by authorized personnel only.
 - The device, must be connected **only** to the GR-8600 panel via its ADR line.
 - First set the address before installation.
To address the device see page 3.
- ADDRESS OPERATION**
For address operations refer to the installation manual of the panel.

LED MODULE CHARACTERISTICS

	GR-1926/15L/24V/ADR	GR-1926/30L/24V/ADR
Manufacturer	Olympia Electronics S.A.	
Model Number	2402159/15L	2402159/30L
Voltage Range	8.5-10.5V DC	
Nominal Power	1W	2W
Connections	Non reversible connection between main pcb and led module	
Temperature (tc)	47 °C max. across the board	



The light source contained in this luminaire shall only be replaced by the manufacturer, or his agent, or a similar qualified person.

NOTE! The light source is non-user replaceable.

NOTE: LED= Light Emitting Diode

LABELING EXPLANATION:

Z: Central supply

1: Maintained

C: Including inhibiting mode

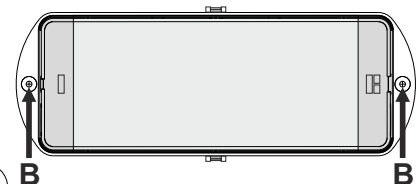
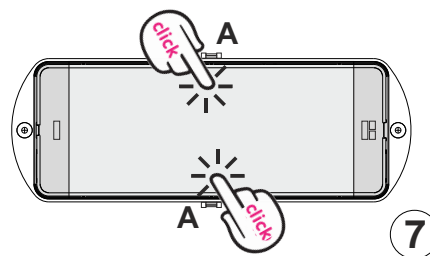
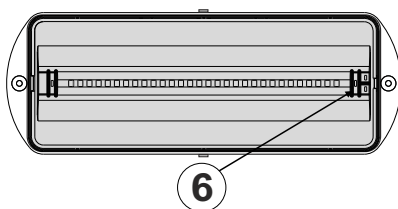
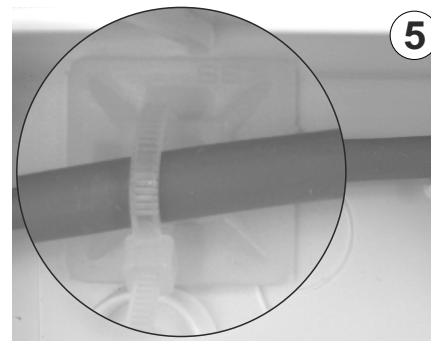
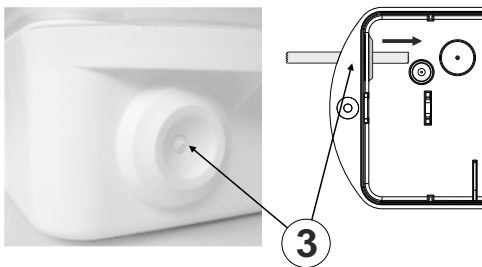
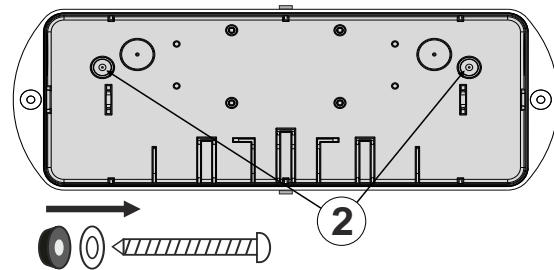
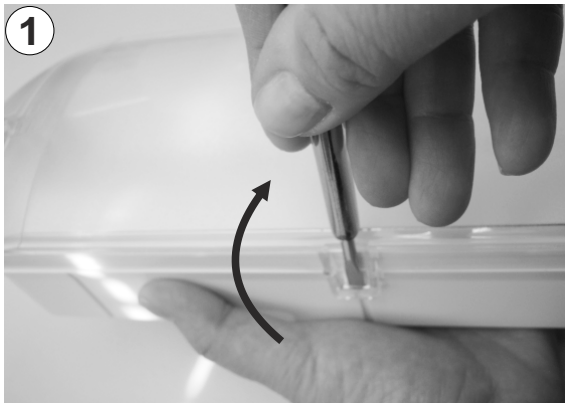
G: Internally illuminated safety sign

Note!! The installer should fill in, on the specification label, the letter G if the luminaire is used as a safety sign.



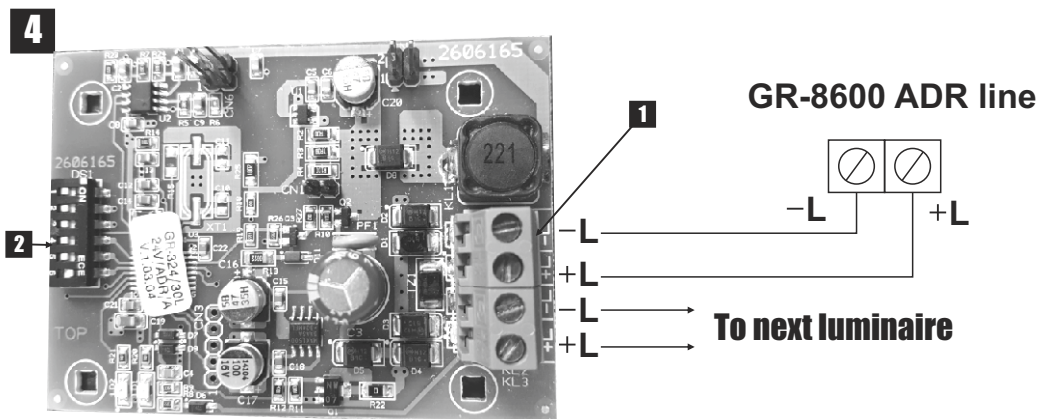
INSTALLATION INSTRUCTIONS FOR WALL OR CEILING MOUNTING

- ① Unfasten the 2 screws (*step 7 B*), after that unclip the plastic latches with a flat blade screwdriver (Figure 1), and remove the diffuser. Place the flat blade screwdriver in the notches located on the sides of the reflector. Pry it gently until it separates from the base.
- ② Install the base plastic (with the included mounting screws and plugs). **WARNING!! To preserve the IP65 rating, fit the screws with the metallic washers and plastic rings which are included.**
- ③ **Always use in any case fire retarded and round mains cable, with a diameter of 5 to 10mm. ATTENTION!! The cable must not be deformed in any way (this requirement is important to ensure the IP65 rating).**
Install the grommet and make a hole in the center by using a small screwdriver. Pass the round cable through the grommet. Install the second included grommet in to the unused hole.
- ④ Connect the power supply cables to the terminal blocks (according to photo on page 3)
- ⑤ Install the included tie to fasten securely the power cables.
- ⑥ Refit the reflector.
- ⑦ Finally place the diffuser (mind the holes of the indications). **Attention!! First the plastic latches (A) must be secured (*click sound*) and then fasten the 2 screws (B) (tightening torque 1.2 Nm).**



Address connections

1. To connect the address cables, perform the connections according to the photo below.
2. Address the luminaire by using the dip-switches.



Please see manual of CBS panel GR-8600 for maximum number of luminaires that can be interconnected.

Address	Dipswitch setting	Address	Dipswitch setting	Address	Dipswitch setting	Address	Dipswitch setting
1		11		21		31	
2		12		22		32	
3		13		23			
4		14		24			
5		15		25			
6		16		26			
7		17		27			
8		18		28			
9		19		29			
10		20		30			

WARRANTY

Olympia Electronics guarantees the quality, condition and operation of the goods. The period of warranty is specified in the official catalogue of Olympia Electronics and also in the technical leaflet, which accompanies each product. This warranty ceases to exist if the buyer does not follow the technical instructions included in official documents given by Olympia Electronics or if the buyer modifies the goods provided or has any repairs or re-setting done by a third party, unless Olympia Electronics has fully agreed to them in writing. Products that have been damaged can be returned to the premises of our company for repair or replacement, as long as the warranty period is valid.

Olympia Electronics reserves the right to repair or to replace the returned goods and to or not charge the buyer depending on the reason of defection. Olympia Electronics reserves the right to charge or not the buyer the transportation cost.

HEAD OFFICE

72nd km. O.N.R. Thessaloniki-Katerini
 P.C. 60300 P.O. Box 06 Eginio Pierias Greece
www.olympia-electronics.gr
info@olympia-electronics.gr